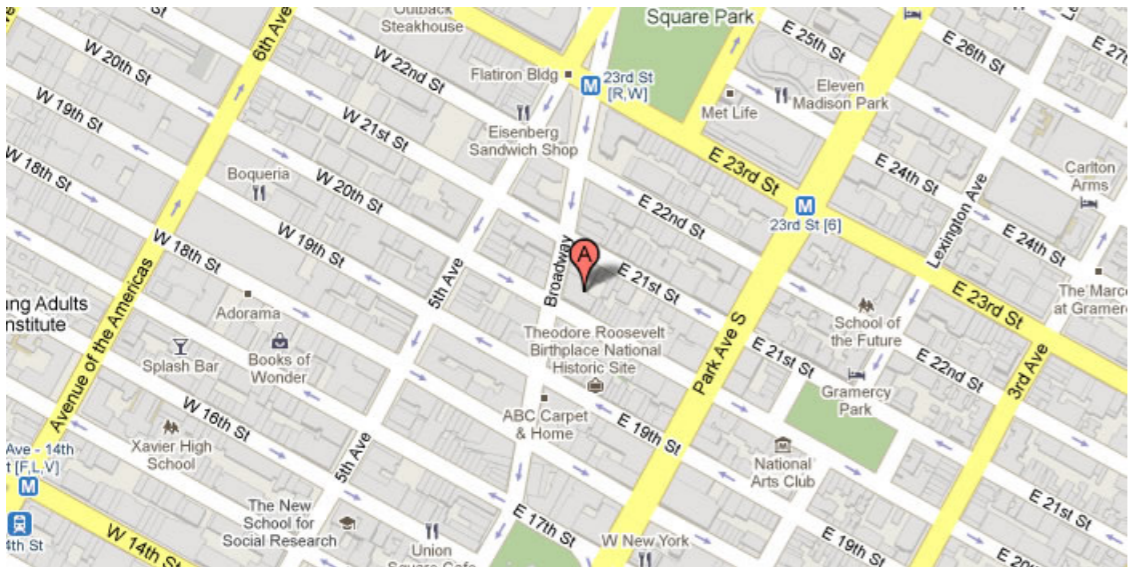


902 BROADWAY, New York, NY 10010



391,576.00 SF

Up to 42,445 SF Available

Office building with modern lobby, private A/C  
upgraded elevators, 24/7 access, full floor identity  
and wood floors

Built: 1913 Architect: Robert T. Lyons

#### Tenants

Safavieh Rugs, Furniture and Design

For more information call

1- 212- 249- 1550

KOEPEL ROSEN

40 East 69th Street

New York, NY 10021

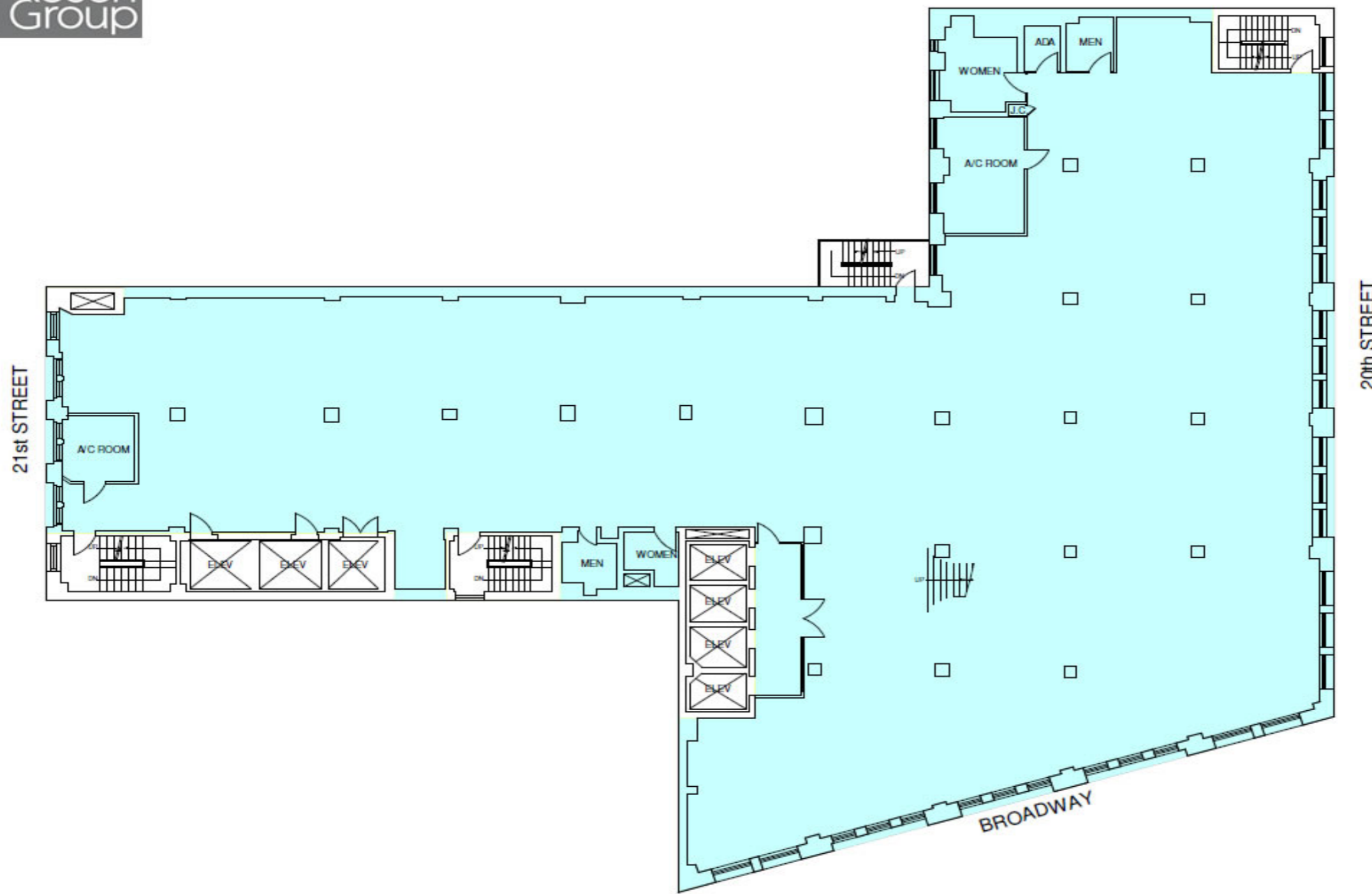
[dkoepfel@koepfelrosen.com](mailto:dkoepfel@koepfelrosen.com)

902 BROADWAY, New York, NY 10010

**902 Broadway**



**Typical Floor Plan**



Note: All dimensions and conditions are approximate and for information only

**K R** Koeppel Rosen LLC  
 40 East 69th Street  
 New York, NY 10021  
 212-249-1550  
 www.koeppelrosen.com

Scale: NTS  
 Date: February 18, 2016



For more information call  
 1- 212- 249- 1550  
 KOEPEL ROSEN  
 40 East 69th Street  
 New York, NY 10021  
 dkoeppe@koeppelrosen.com