

FOR SALE

301 HELEN STREET

South Plainfield, NJ

40,747 SF / 2.28 ACRES



FORMER PHARMA FACILITY

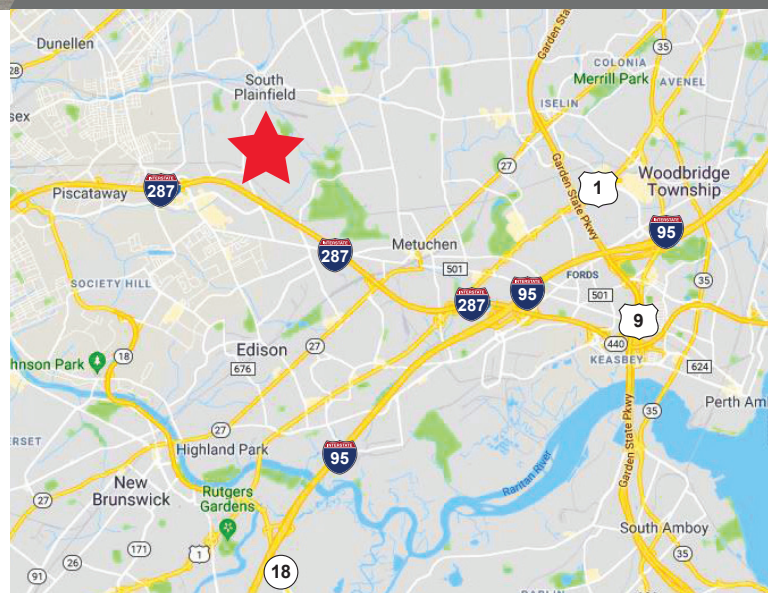
For Sale

± 40,747 SF on 2.28 Acres

Call for Pricing

Property Highlights

- ± 11,467 SF Office Area
- 20' Clear Ceiling Height
- 4 Tailgate Loading Docks
- Wet Sprinkler System
- Fully Air-Conditioned
- Gas Heat
- Racking and Office Furniture can be Available
- Zoned M-3 Industrial
- Taxes \$47,456
- Occupancy January 2020



CHARLES FERN

Vice Chairman
+1 732 243 3101
chuck.fern@cushwake.com

SHAWN STRAKA

Managing Director
+1 973 292 4603
shawn.straka@cushwake.com



**CUSHMAN &
WAKEFIELD**

cushmanwakefield.com

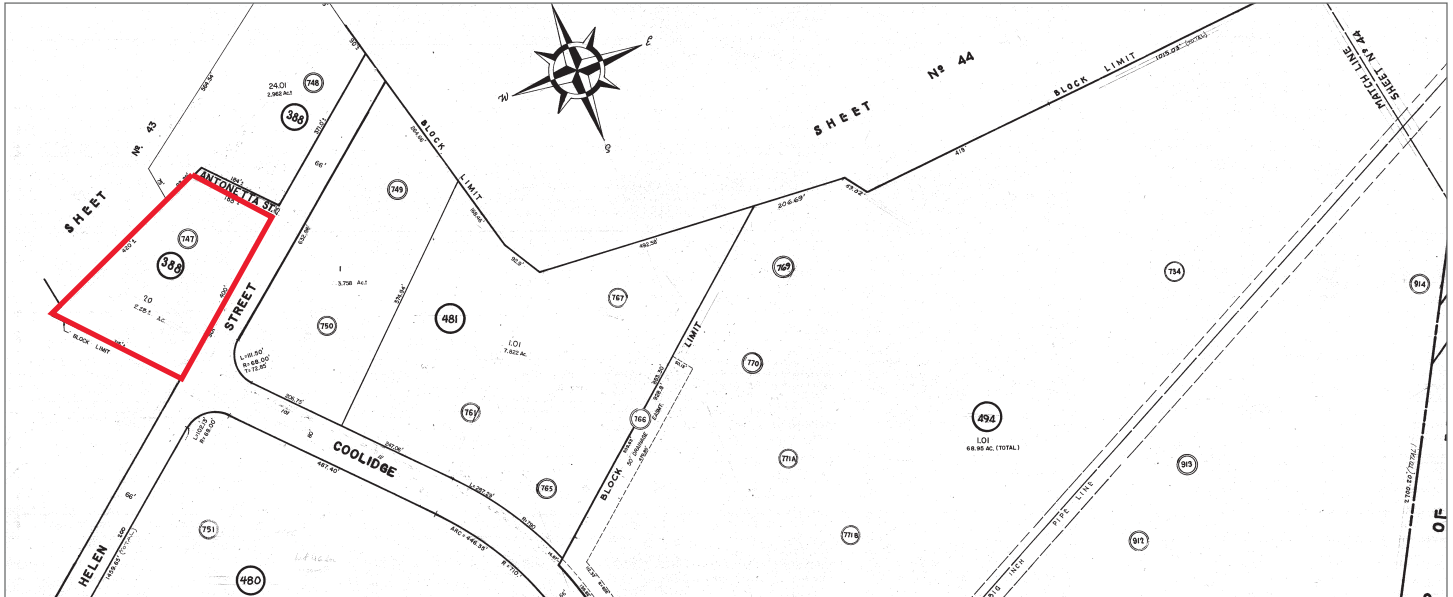
FOR SALE

301 HELEN STREET

South Plainfield, NJ

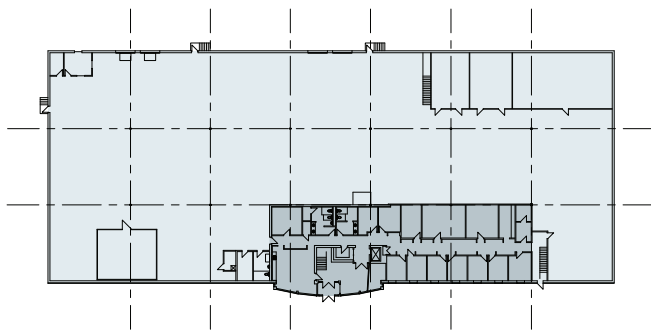
± 40,747 SF / 2.28 ACRES

TAX MAP ± 40,747 SF ON 2.28 ACRES

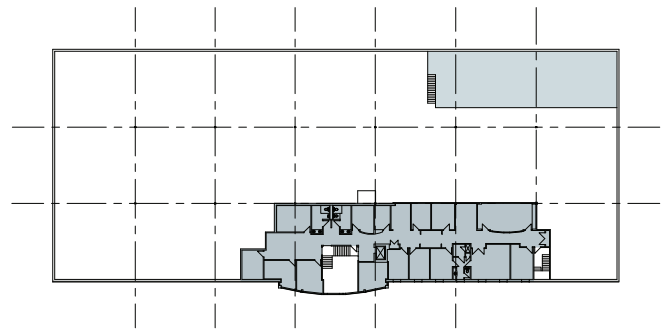


FLOOR PLAN

Overall Footprint



Office Mezzanine 5,697 SF



CHARLES FERN

Vice Chairman
+1 732 243 3101
chuck.fern@cushwake.com

SHAWN STRAKA

Managing Director
+1 973 292 4603
shawn.straka@cushwake.com



CUSHMAN &
WAKEFIELD

cushmanwakefield.com