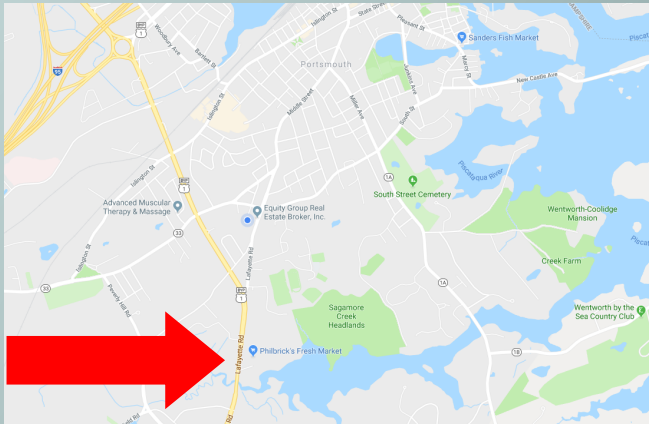


# THE EQUITY GROUP

---

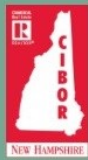
## REALTORS

### 1418 SF OFFICE GREENLEAF WOODS, PORTSMOUTH

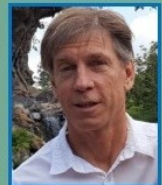


- Professional office with campus setting
- Edge of downtown, on Rt. @bypass with signal intersection. Walk to stores, fitness center, and nature trails.
- 5-7 offices, reception, conf. room, IT/storage
- rm. kitchenette, shower, private bathroom
- Recently renovated. flexible floor plan
- Windows 3 sides for great natural light and views.
- Central A/C, ample on site parking

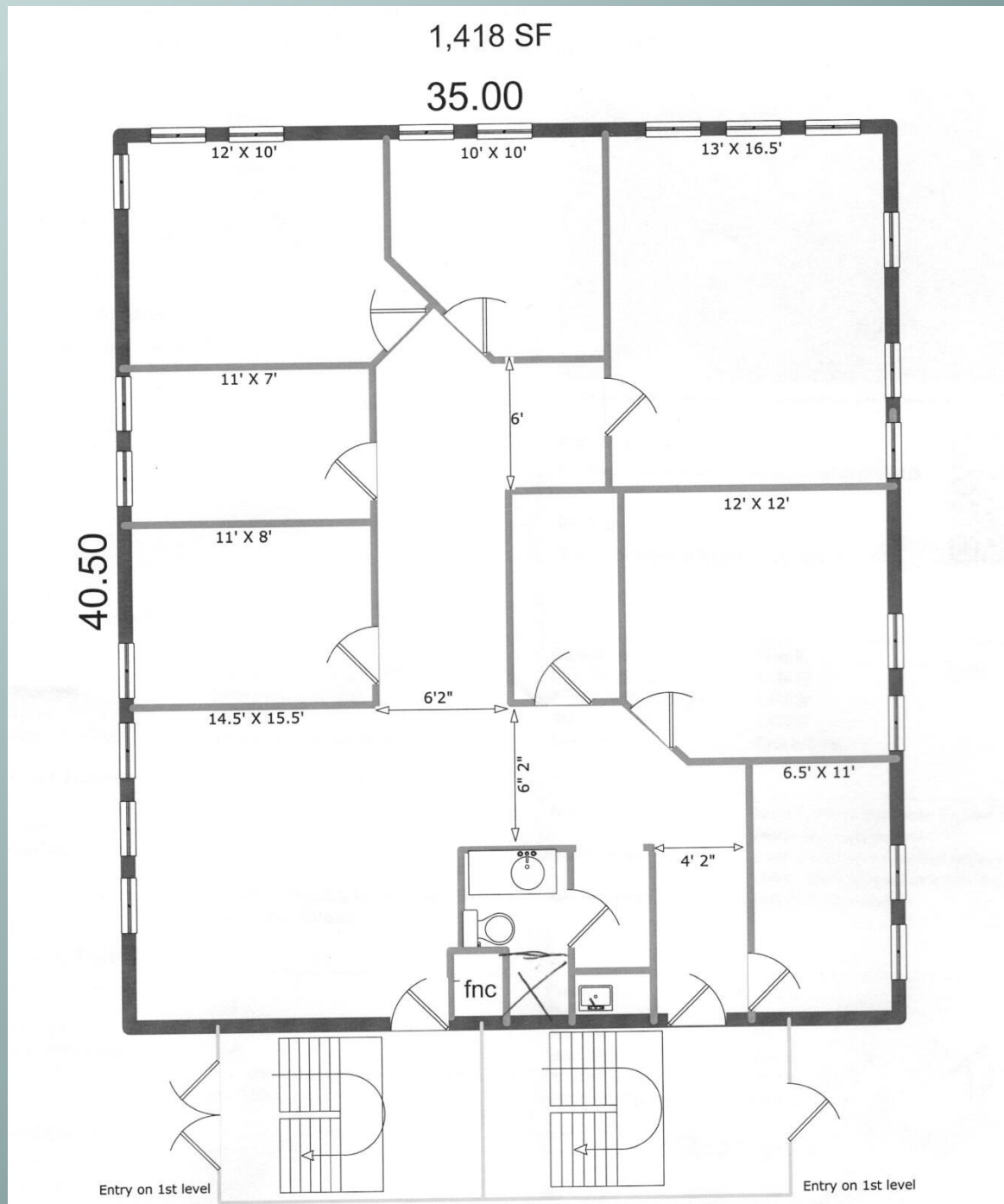
**\$2100 month plus heat and elec  
( \$10/NNN)**



**James P. Ward**  
 Licensed Broker NH & VT  
 603 448 8000  
 264 Lafayette Rd. #10, Portsmouth NH  
**EquityGroupRealtors.com**



Ideally suited on the edge of downtown, but without the parking hassles. Ample on site parking. Plus scenic views of marsh and tidal flats. Fitness center on site, walk to all the conveniences. Just off Rt. 1 at the bypass. 2 miles to I-95. Flexible floor layout, with multiple offices, kitchenette, private bath with shower. 2 entrys. Newly renovated unit. Interior detailing. Plenty of natural light, windows on 3 sides. Complex just finished with new siding on all bldg. and freshly paved. Campus setting with multiple bldgs, ample landscaping and adj to open space and trails. Join the community of medical, financial and service professionals. Gas heat, central air. Best value in the Portsmouth market. Rate is plus utilities only. possible shared office or suite. . Broker Interest





# Trails map

