



10
west end



AMENITIES



PLANS



PARKING



INFORMATION



NEIGHBORHOOD



LOCATION

Contents

BUILDING INFORMATION

LOCATION

AMENITIES

FLOOR PLANS


NEIGHBORHOOD


PARKING


THE BUILDING


10 West End is the first Class A office building constructed in over 18 years in the booming I-394 sub-market of the Twin Cities. Enjoy modern efficiencies and amenities, beautiful outdoor spaces, high ceilings, full-height glass, and leading-edge technology.


QUICK FACTS


 Building Size:
344,224 SF; 11 Floors

 Window Height:
10' 2"

 Typical Floor Size:
34,622 SF

 Adjacent to Central
Park West:
1 acre of green space

 Parking Ratio:
4.0 stalls / 1,000 SF

 Sustainability:
LEED Certified



THE BUILDING

SIGNAGE OPPORTUNITIES

10 West End boasts some of the premier signage opportunities in West End market with approximately 250,000 impressions per day.



LOCATION



NEIGHBORHOOD



FAST FACTS

 15 LUNCH + DINNER HOTSPOTS
4 BREAKFAST SPOTS
10 HAPPY HOUR VENUES

 16 STORES
3 FITNESS STUDIOS

 2 HOTELS
3 APARTMENT BUILDINGS

AMENITIES

FAST FACTS



Retail space that opens on Central Park West



Open-air balcony on every floor



Top-floor 3,200 SF sky deck



High-tech conferencing spaces adjacent to the rooftop terrace



Dynamic bike and fitness facilities



Collaborative lobby workspaces



Secure tempered executive parking

FLOOR PLANS

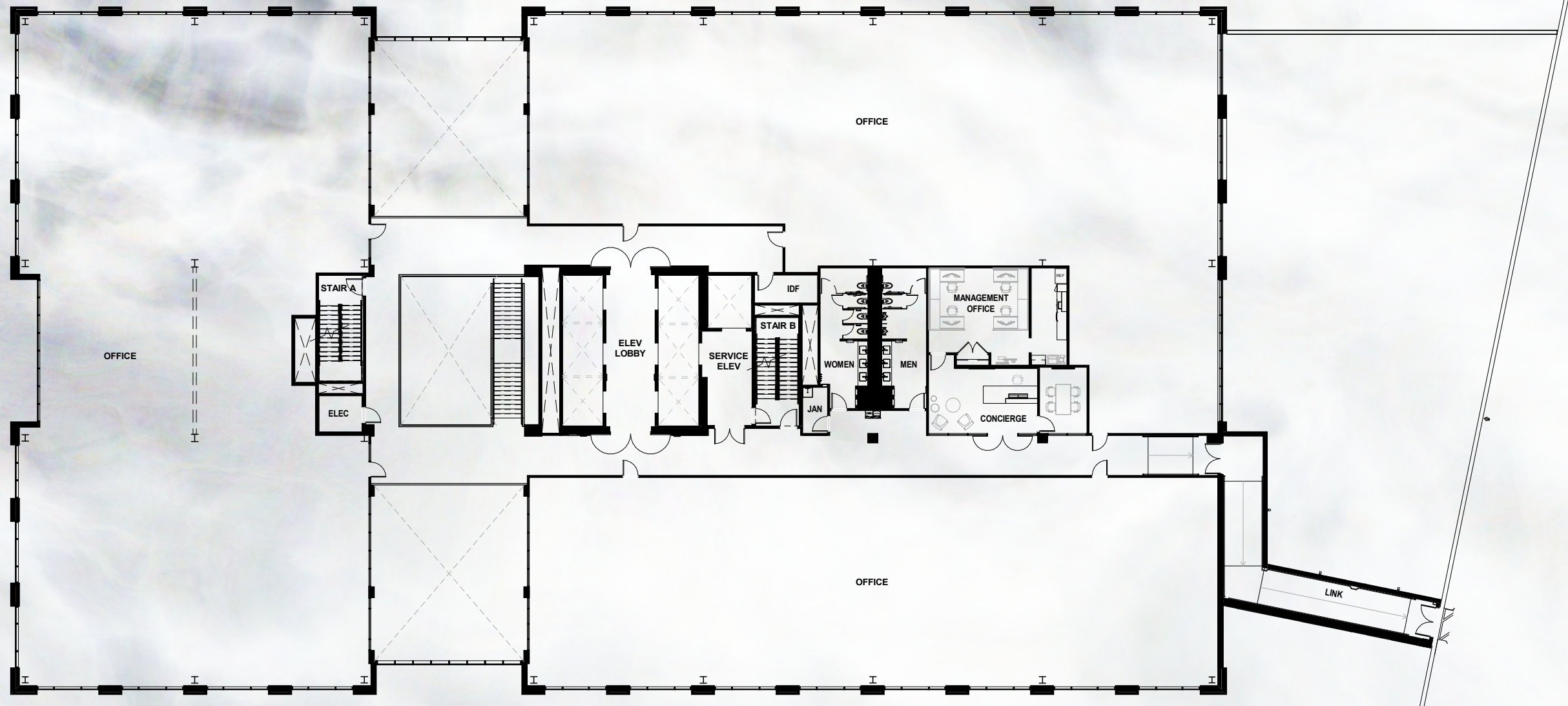


1ST FLOOR HIGHLIGHTS

TRAINING ROOM:
2,200 SF, 100 person conference room,
State of the art technology.

FITNESS ROOM:
3,500 square foot fitness center and bike
facility available for group fitness.

FLOOR PLANS



2ND FLOOR HIGHLIGHTS

CONCIERGE:

Full time, on-site concierge to help with everything you need. Services including tenant events and programming, conference room scheduling, catering coordination, meeting and event planning, and much more.

BUILDING ACCESS:

Direct access from the covered parking ramp to the building via the 2nd floor.

MANAGEMENT OFFICE:

Full time on-site management and facilities staff.

FLOOR PLANS



3, 5, 7, 9 FLOOR HIGHLIGHTS

- Size: 34,500 Square Feet
- Net Rate: \$28.00 Per Square Foot
- **Tax/Ops 2021**
 - Ops: \$7.61
 - Tax: \$1.75
 - Total: \$9.36

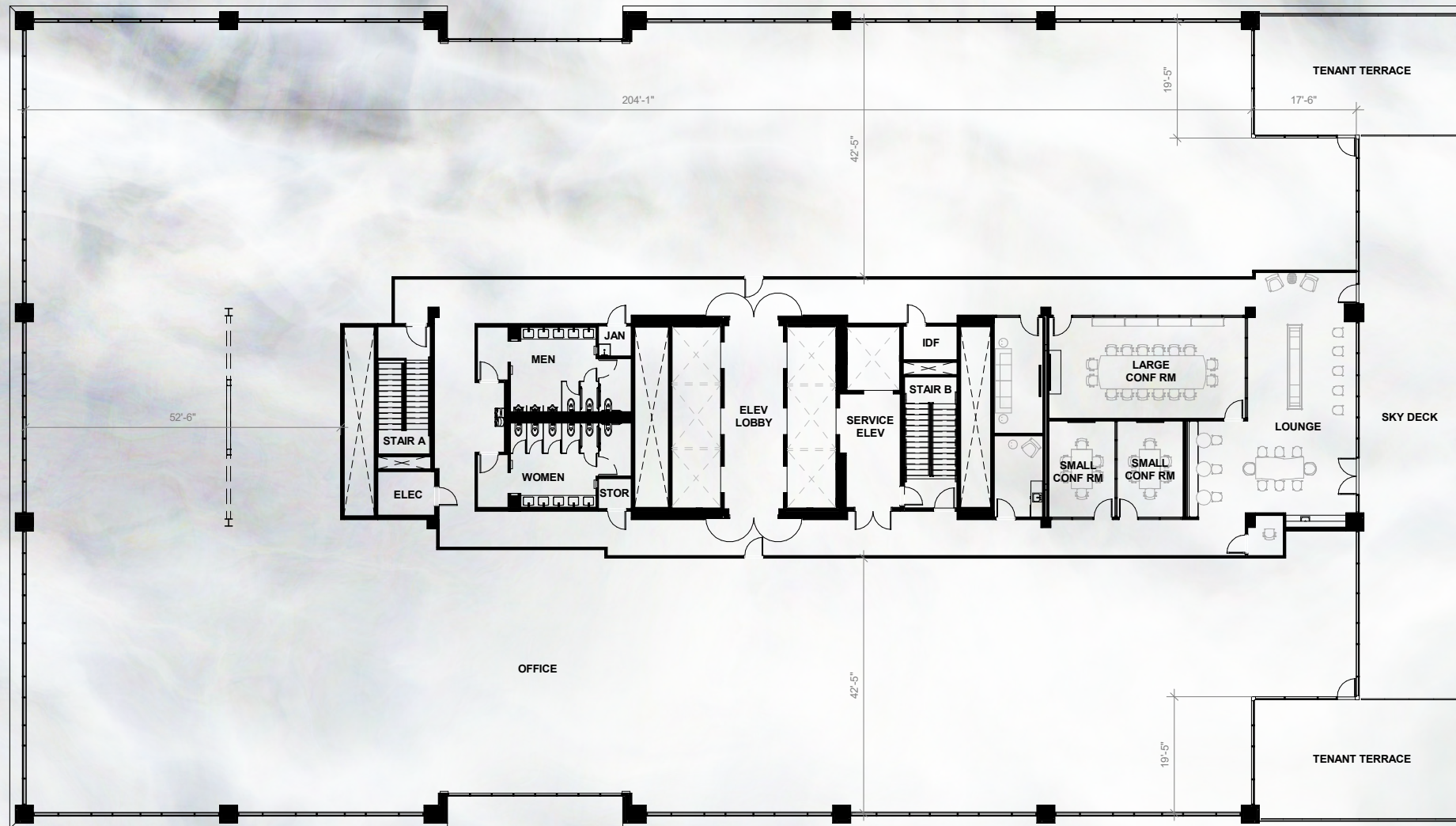
FLOOR PLANS



4, 6, 8, 10 FLOOR HIGHLIGHTS

- Size: 34,500 Square Feet
- Net Rate: \$28.00 Per Square Foot
- **Tax/Ops 2021**
 - Ops: \$7.61
 - Tax: \$1.75
 - Total: \$9.36

FLOOR PLANS



11TH FLOOR HIGHLIGHTS

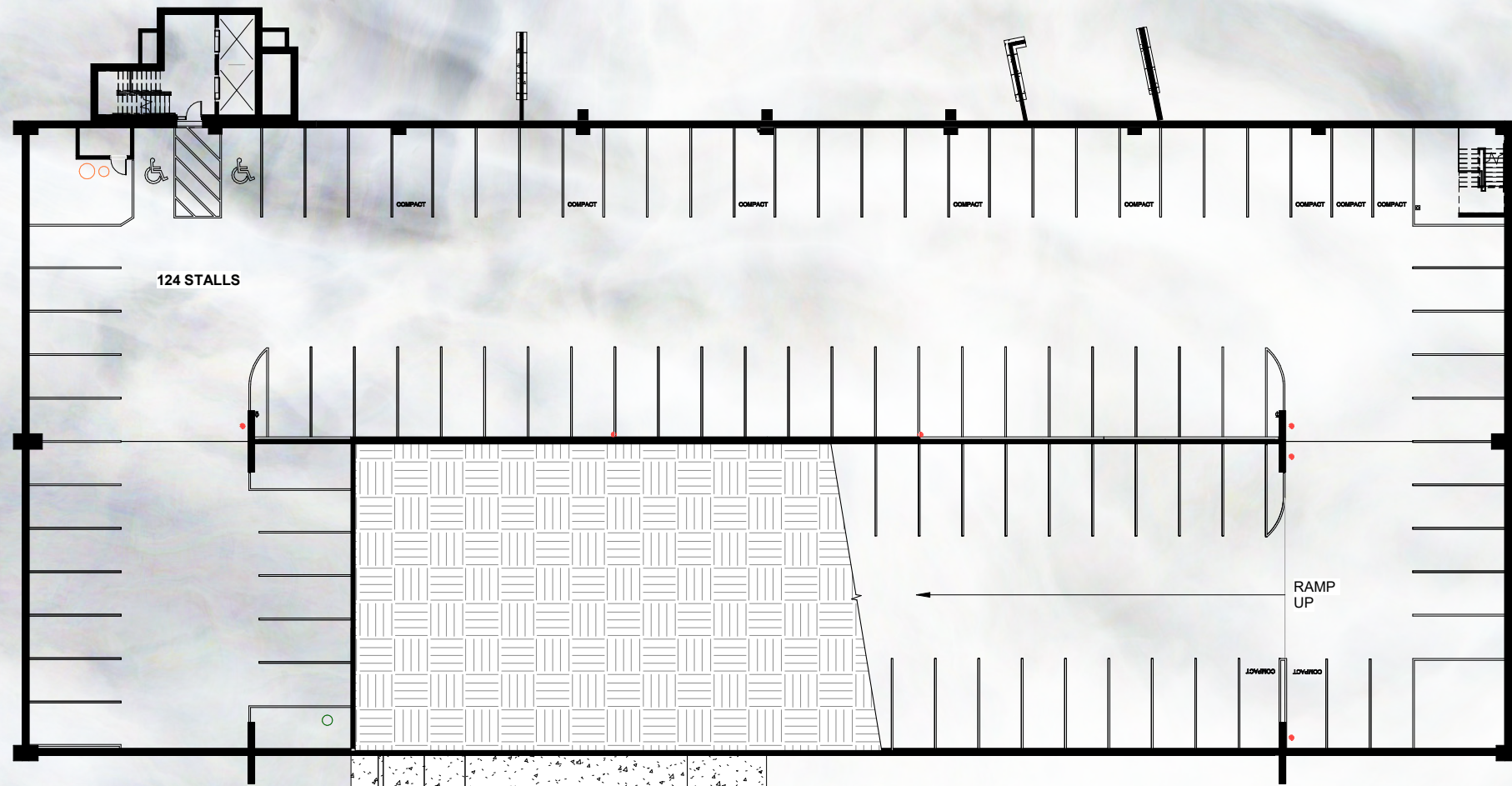
Large conference room will seat 30 people. The 2 small conference rooms seat 8-10 people. Soft seating, professional lounge adjacent to the skydeck. Accessible to every tenant. Available for daily use, parties, and to reserve for individual tenant use.

The 11th floor is 23,828 SF, which lends itself to multi-tenants or a smaller user looking to make an impact with top floor space. In addition to tenant space this floor will also host shared conferencing and lounge amenities, as well as a skydeck overlooking the downtown Minneapolis skyline.

PARKING



EXECUTIVE PARKING



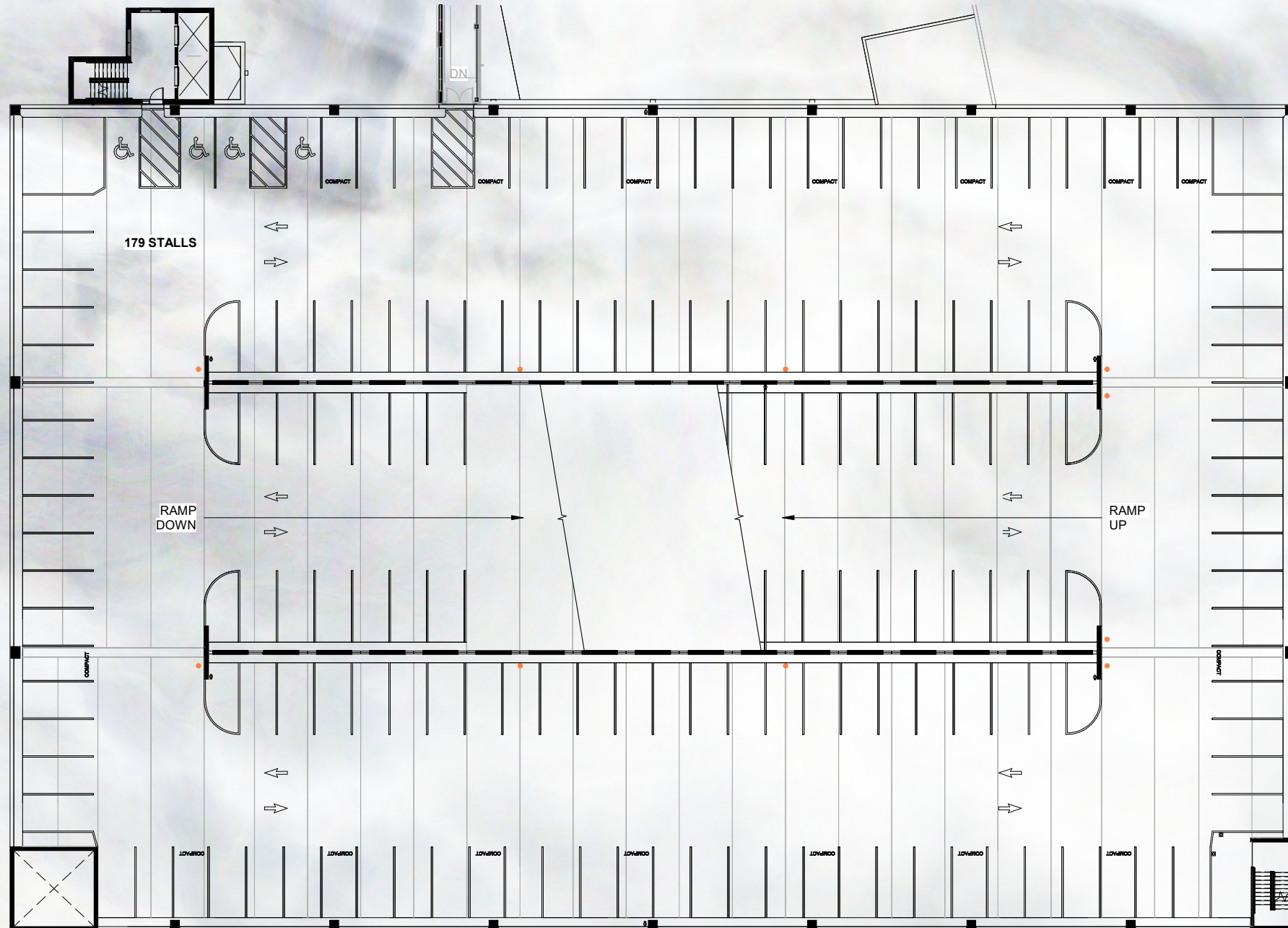
P0 - EXECUTIVE PARKING

Executive parking is available at 10 West End at a monthly rate of \$150 per month per stall. The executive parking is located below ground on level P0.

124 Total Executive Parking Stalls

- 112 Standard Stalls
- 10 Compact Stalls
- 2 Accessible Stalls

STANDARD PARKING



P1-P7 - STANDARD PARKING

10 West End provides covered parking for all its tenants free of charge on a first come first serve basis. There are seven levels of standard parking that are located on levels P1 thru P7

1,228 Total Standard Parking Stalls

1,095 Standard Stalls

105 Compact Stalls

28 Accessible Stalls



FOR MORE INFORMATION CONTACT

MIKE HONSA

612.359.1631

mike.honsa@transwestern.com

MIKE SALMEN

612.359.1660

mike.salmen@transwestern.com

TATE KROSSCHELL

612.260.2427

tate.krosschell@transwestern.com

TERESA BORGEN

612.359.1621

teresa.borgen@transwestern.com