



ARCHITECT
 Berger Devine Yeager, Inc.
 1100 WEST 10TH AVENUE, SUITE 1111
 DENVER, COLORADO 80202
 TEL: 303.733.1232
 FAX: 303.733.1233

MEP
 GIBBENS DRAKE SCOTT, INC.
 1700 WEST 10TH AVENUE, SUITE 1111
 DENVER, COLORADO 80202
 TEL: 303.733.1232
 FAX: 303.733.1233

STRUCTURAL
 STRUCTURALOGICA, LLC
 1100 WEST 10TH AVENUE, SUITE 1111
 DENVER, COLORADO 80202
 TEL: 303.733.1232
 FAX: 303.733.1233

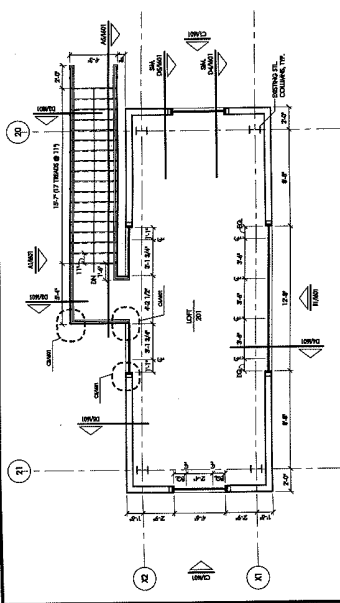
BERGER DEVINE YAEGER OFFICE
 ROSANA SQUARE SHOPPING CENTER
 1 19TH STREET & METCALF AVENUE, OVERLAND PARK, KANSAS

PROJECT NO.	1201
DATE	11/16/08
DESIGNED BY	JM
CHECKED BY	CD
DATE	
REVISIONS	
NO.	DESCRIPTION

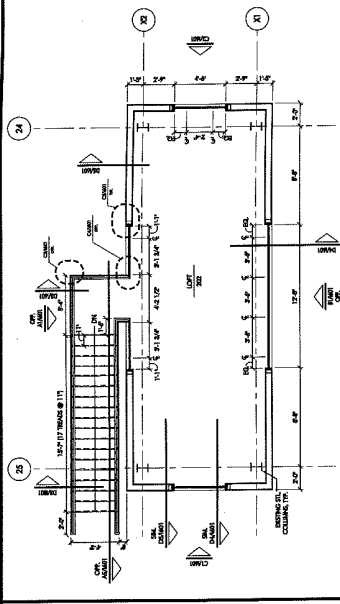
INTERIOR FLOOR PLAN

1201

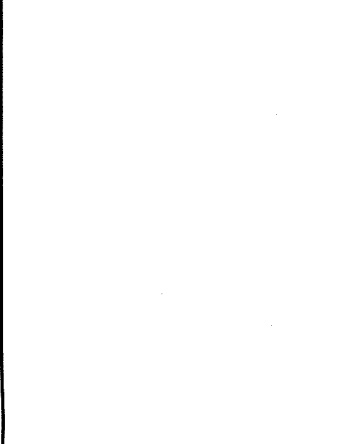
Scale: 1/8" = 1'-0"



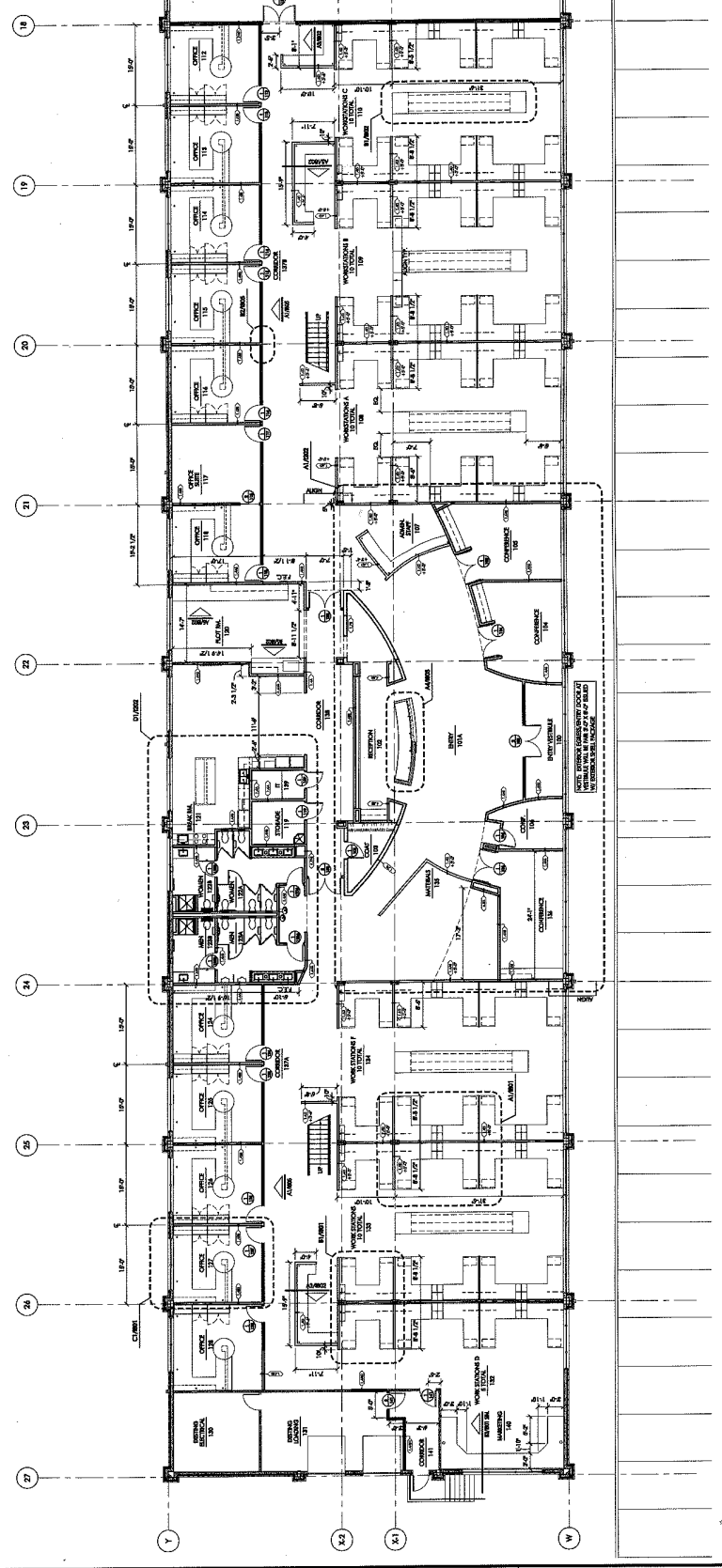
D1 WORK LOFT FLR. PLAN
 SCALE: 1/8" = 1'-0"



D4 WORK LOFT FLOOR PLAN
 SCALE: 1/8" = 1'-0"



D5 NOT USED
 SCALE: 1/8" = 1'-0"



A1 INTERIOR FLOOR PLAN
 SCALE: 1/8" = 1'-0"