

FOR LEASE

25 HANFORD STREET

SEATTLE, WA 98134



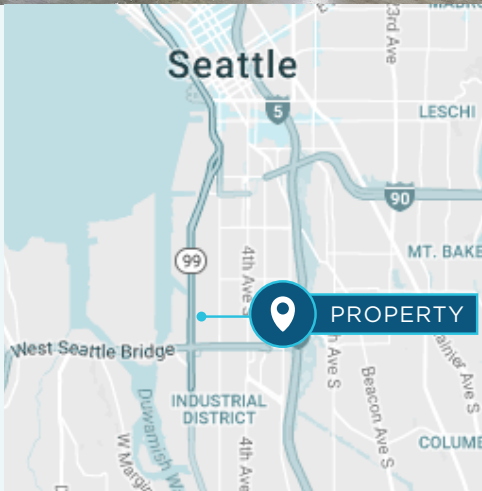
NEIL WALTER
COMPANY

BUILD-TO-SUIT OFFICE UP TO 4,743 SF



SUITE 25

Size:	16,231 SF (Total) Up to 4,743 SF (Office)
Loading:	3 Dock-high doors
Clear Height:	15'
Lease Rate:	\$1.05/SF Shell \$1.00/SF Office
NNN Rate:	\$0.244/SF



PROPERTY FEATURES



Excellent truck maneuvering and parking with close-in location



Approximately 2 miles south of downtown Seattle



Directly adjacent to the Port of Seattle

KEVIN SKILLESTAD

206.787.1460

kskillestad@neilwalter.com



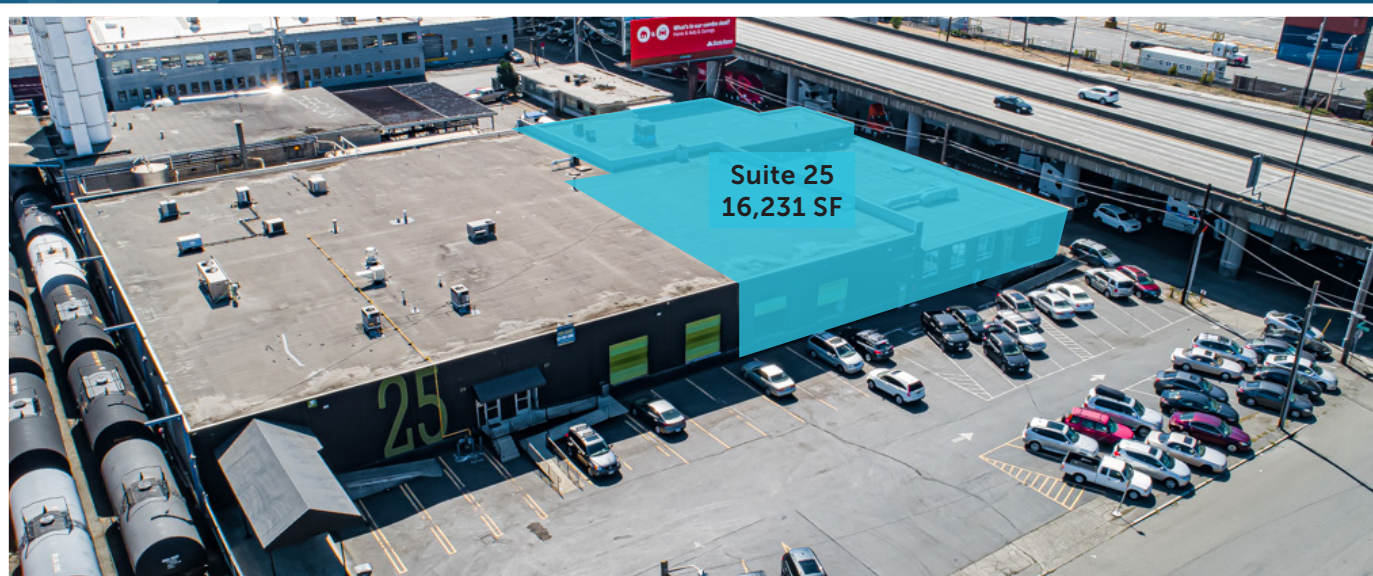
All square footage references are approximate. The information contained herein is from sources deemed reliable. Prospective Buyer or Tenant should conduct an independent investigation and verification of all matters.

25 S HANFORD STREET

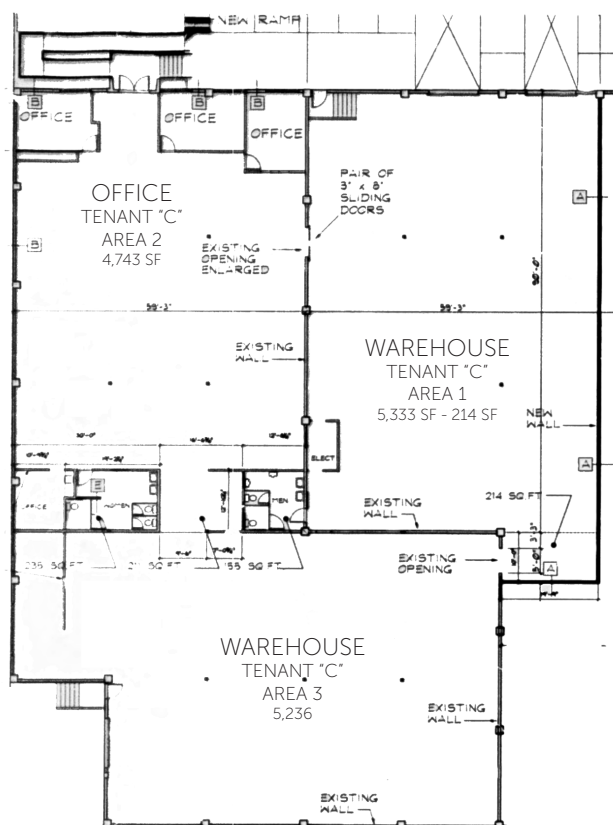
SEATTLE, WA 98134



NEIL WALTER
COMPANY



Suite 25
16,231 SF



Suite 25
16,231 SF
Up to 4,743 SF Office

KEVIN SKILLESTAD
206.787.1460
kskillestad@neilwalter.com

550 S Michigan St
Seattle, WA 98108
206.787.1800
www.neilwalter.com