

±8,280 SQUARE FOOT INDUSTRIAL SPACE FOR LEASE WITH 100% HVAC

9520 Black Mountain Road, Suite A, San Diego, CA 92126

AVAILABLE



CHRIS DUNCAN

Vice President | 858.458.3307
Lic. #01324067 | cduncan@voitco.com

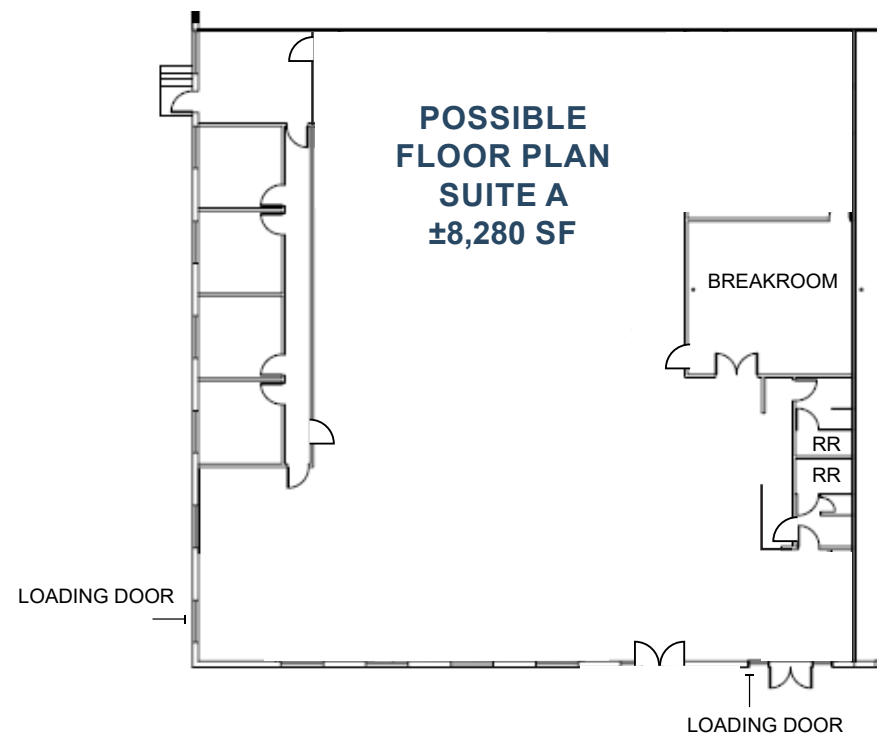
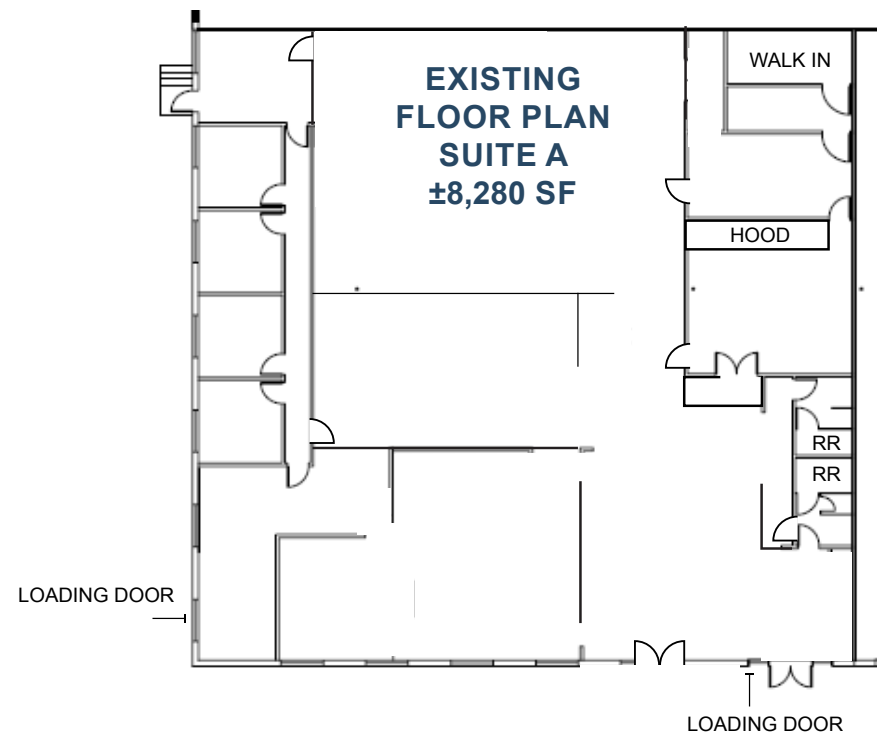
SPENCER KERRIGAN

Senior Associate | 858.458.3310
Lic. #01921490 | skerrigan@voitco.com

9520 BLACK MOUNTAIN ROAD

PROPERTY FEATURES

- » Suite A: ± 8,280 square feet available for lease
- » 15% office
- » 100% HVAC
- » 16' - 18' clear height
- » 2 loading doors
- » Sprinklers
- » Drive around truck access
- » Excellent access to I-805 and I-15 freeways
- » Zoned IL-2-1
- » Gas available, floor drains in place
- » Potential uses include: Brewery, commercial kitchen, industrial, manufacturing, showroom
- » Asking Rate: \$1.20 Gross



9520 BLACK MOUNTAIN ROAD

San Diego, CA 92126

AVAILABLE



COLLECTION STREET	CROSS STREET	CPD
Black Mountain Rd	Activity Rd	13,300
Kearny Villa Rd	Candida St	12,133
Miramar Rd	Black Mountain Rd	60,059
Miramar Rd	Padgett St	60,160
Kearny Villa Rd	Candida St	13,340

CHRIS DUNCAN

Vice President | 858.458.3307
Lic. #01324067 | cduncan@voitco.com

SPENCER KERRIGAN

Senior Associate | 858.458.3310
Lic. #01921490 | skerrigan@voitco.com

4180 La Jolla Village Drive, Suite 100, La Jolla, CA 92037 • 858.453.0505 • 858.408.3976 Fax • Lic #01991785 | www.voitco.com

Licensed as Real Estate Salespersons by the CA Bur of Real Estate. The information contained herein has been obtained from sources we deem reliable. While we have no reason to doubt its accuracy, we do not guarantee it. ©2018 Voit Real Estate Services, Inc. All Rights Reserved.

Voit

REAL ESTATE SERVICES