

For Sale or Lease
2,955 SF
Office Building
Independence, Missouri



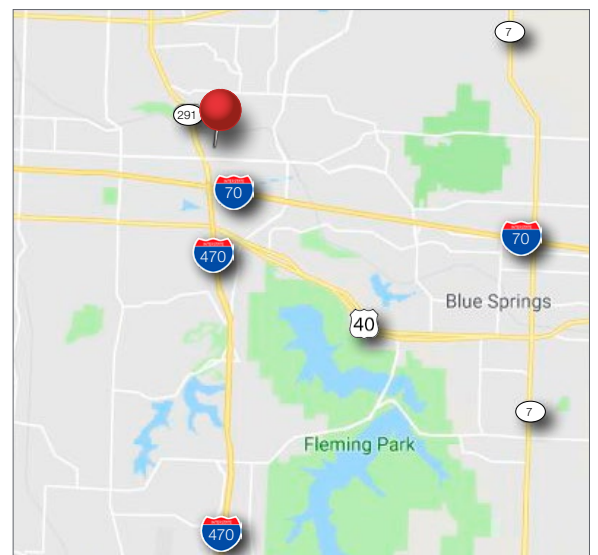
3800 Ponca Drive Independence, Missouri

- 2,955 SF total
- 0.86 Acre parcel
- Visibility from I-470 / 291 N
- Located on private street
- Immediate access to Independence Commons / Independence Center
- Lease Rate: \$3,600 per month 'gross'
- Sale Price: \$399,000

For more information contact:

Ben Boyd, CCIM

+1 913 890 2010 • ben@nai-heartland.com

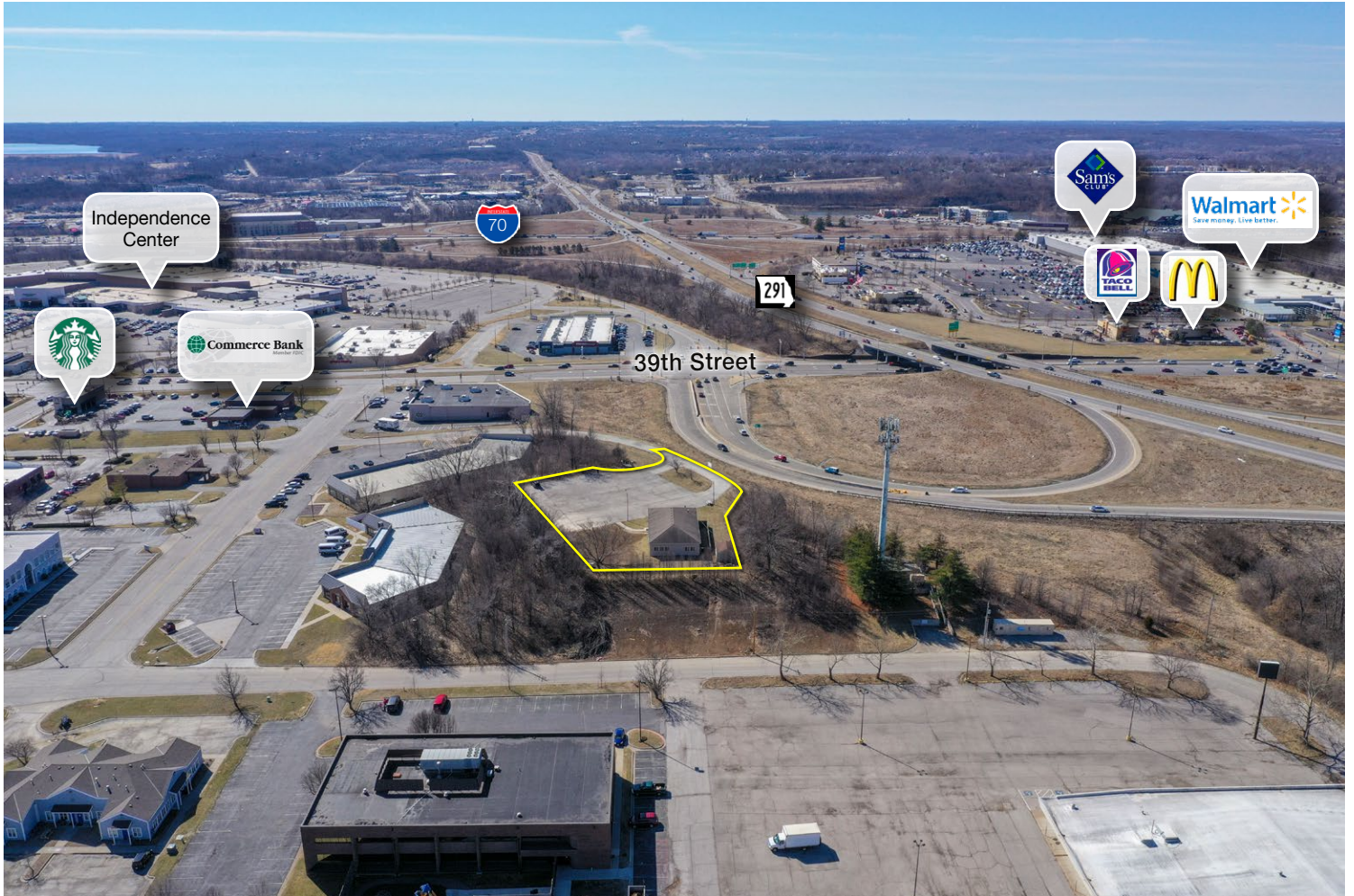


NO WARRANTY OR REPRESENTATION, EXPRESS OR IMPLIED, IS MADE AS TO THE ACCURACY OF THE INFORMATION CONTAINED HEREIN, AND THE SAME IS SUBMITTED SUBJECT TO ERRORS, OMISSIONS, CHANGE OF PRICE, RENTAL OR OTHER CONDITIONS, PRIOR SALE, LEASE OR FINANCING, OR WITHDRAWAL WITHOUT NOTICE, AND OF ANY SPECIAL LISTING CONDITIONS IMPOSED BY OUR PRINCIPALS NO WARRANTIES OR REPRESENTATIONS ARE MADE AS TO THE CONDITION OF THE PROPERTY OR ANY HAZARDS CONTAINED THEREIN ARE ANY TO BE IMPLIED.

4400 College Boulevard Suite 170
Overland Park, Kansas 66211
+1 913 362 1000
nai-heartland.com

3800 Ponca Dr | Independence, MO

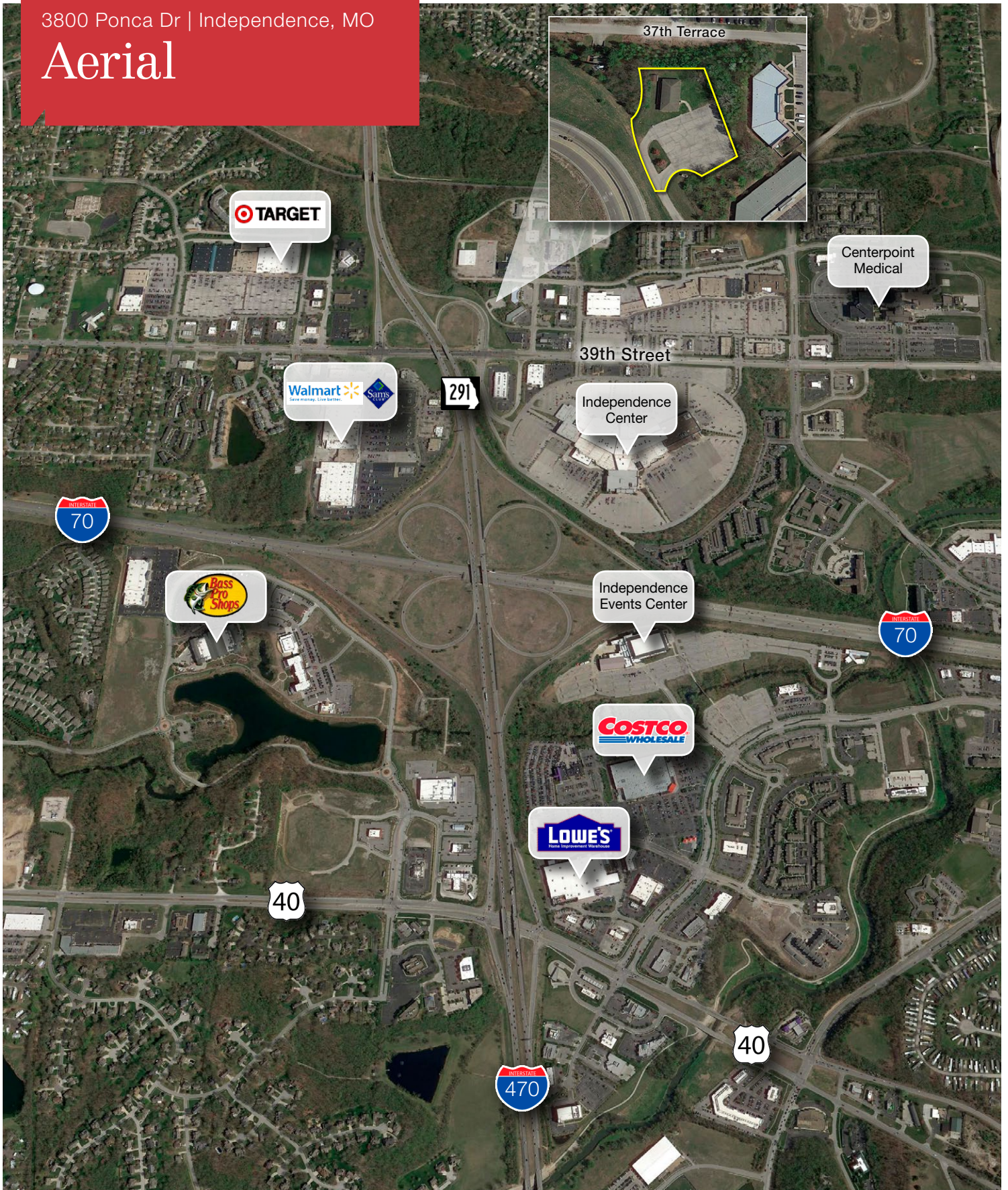
Location



4400 College Boulevard Suite 170
Overland Park, Kansas 66211
+1 913 362 1000
nai-heartland.com

3800 Ponca Dr | Independence, MO

Aerial

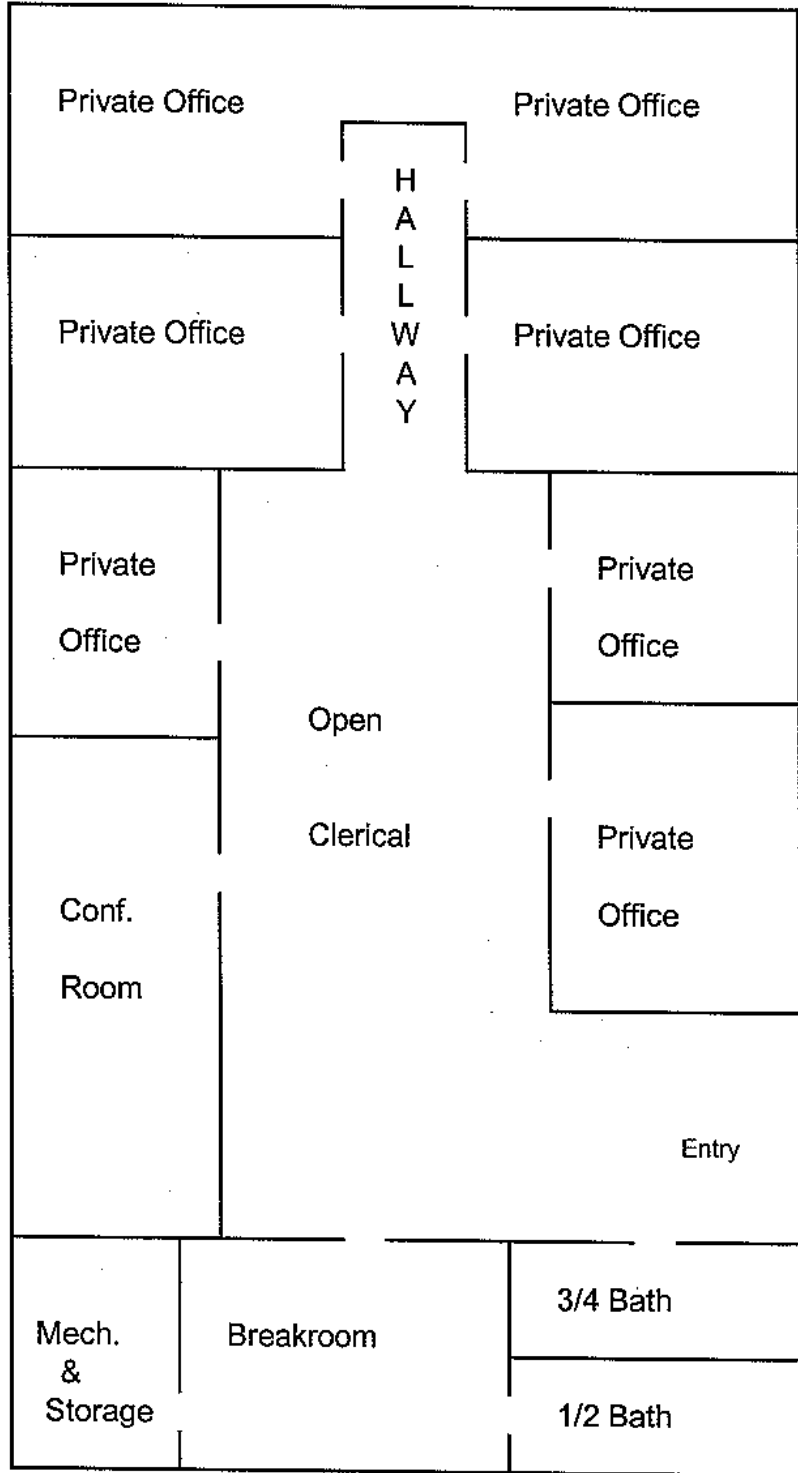


NAIHeartland

4400 College Boulevard Suite 170
Overland Park, Kansas 66211
+1 913 362 1000
nai-heartland.com

3800 Ponca Dr | Independence, MO

Floor Plan



38.5'

76.75'