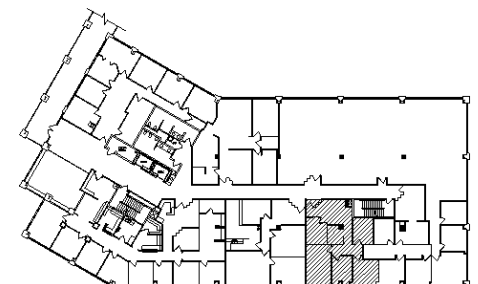


**SUITE #265**

1/8"=1'-0"



KEY PLAN

1,287 RSF



M C C A R T H Y  
 Architectural Interiors  
 3333 East Camelback Road  
 Suite 180  
 Phoenix, Arizona 85018-2323  
 Telephone 602.955.4499  
 Facsimile 602.955.4599  
 N O R D B U R G

**5080 BUILDING**  
 5080 NORTH 40TH STREET  
 PHOENIX, ARIZONA

**CAMROAD PROPERTIES**  
 Contact: Portia Dempsey  
 (602) 956-2200