

37 W 26

HIGH-END
FULL FLOORS
AVAILABLE

NEWMARK



FLOORS

Entire 6th floor - 11,275 RSF
Entire 7th floor - 11,275 RSF
Entire 8th floor - 11,275 RSF
Entire 9th floor - 11,275 RSF
Entire 11th floor - 11,275 RSF

POSSESSION

Q1 2023
Q1 2023
Q1 2023
Immediately
Q1 2023

TERM

Negotiable

RENT

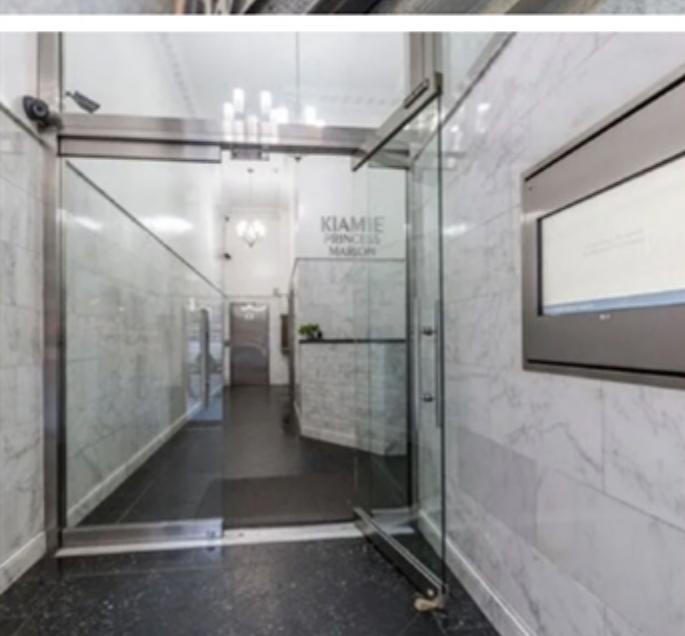
Upon Request

BUILDING FEATURES

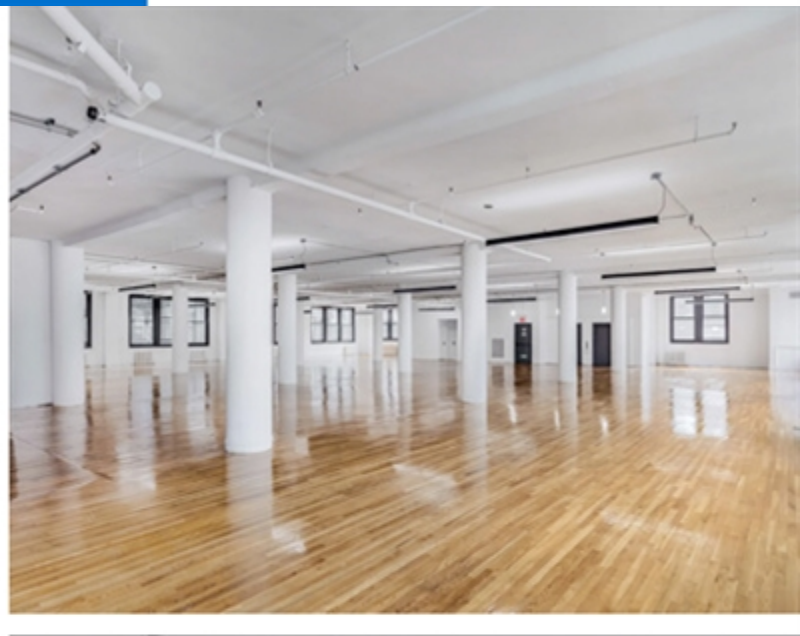
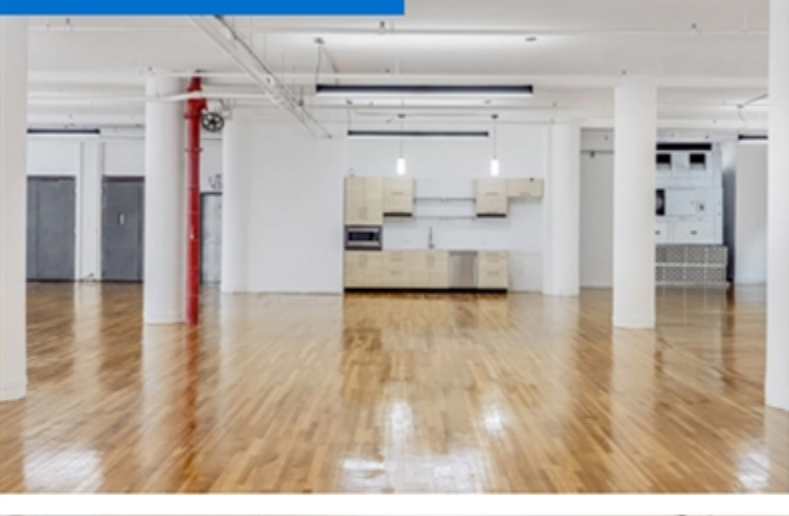
- » Landlord will build to suit
- » 4 sides of windows / 37 windows per floor
- » Soaring 11'9" ceilings
- » New HVAC tenant controlled
- » Exposed brick on each floor
- » Directly metered to Con Edison
- » Attended lobby

▶ TAKE A VIRTUAL TOUR

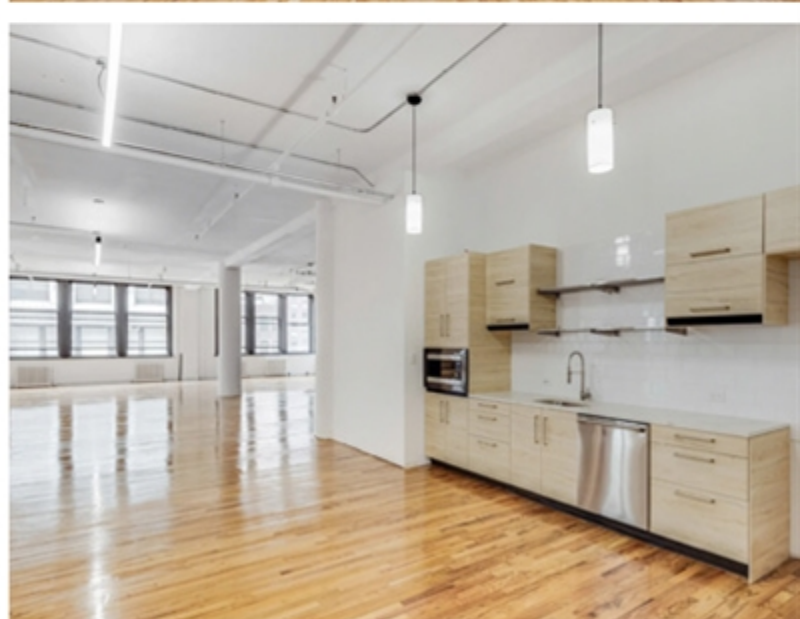
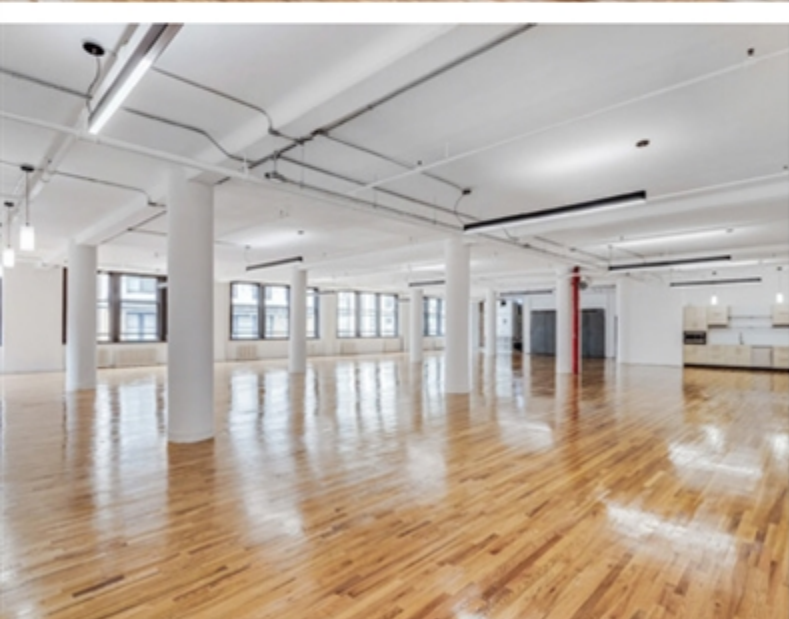
NEWMARK



9TH FLOOR PHOTOS

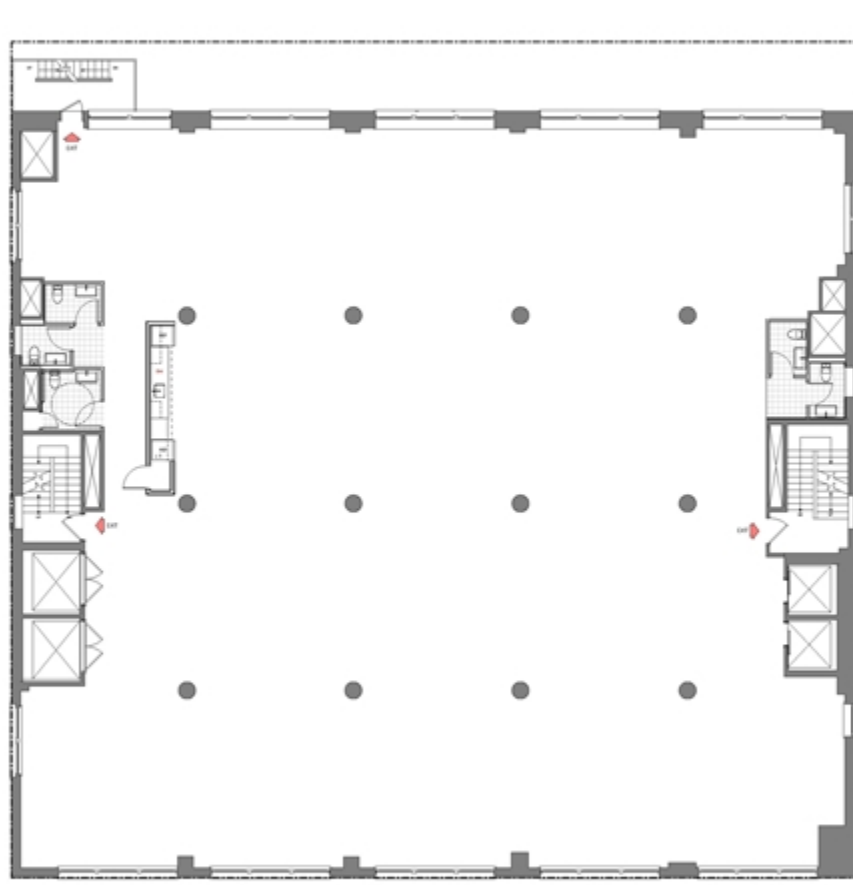


9TH FLOOR PHOTOS



FLOOR PLAN

Entire 9th Floor | 11,275 RSF



WEST 26TH STREET

NEWMARK

37 W 26



CONTACTS:

PAUL DAVIDSON
t 212-372-2051
c 516 236-1710
paul.davidson@nrmk.com

ROY LAPIDUS
t 212-372-2170
rlapidus@gfpre.com

ELLIOT ZELINGER
t 212-452-6078
ezelinger@savittpartners.com

COREY HIGHT
t 212-452-6081
chight@savittpartners.com

The information contained herein has been obtained from sources deemed reliable but has not been verified and no guarantee, warranty or representation, either express or implied, is made with respect to such information. Terms of sale or lease and availability are subject to change or withdrawal without notice.

NEWMARK

DOWNLOAD BROCHURE