



FEATURES:

- Excellent freeway visibility
- Currently zoned for office. In talks with City 4 retail rezoning
- Approved pylon sign and freeway signage
- In close proximity to large upscale residential community
- Adjacent to high performing -Mercedes Benz and Audi dealerships
- Easy access to I-15

PRICE:
\$7,400,000.00

Nick Corbell
ncorbell@leetemecula.com
D 951.445.4522
License #01932821

Nick Earle
nearle@leetemecula.com
D 951.445.4528
License #01916982

Michael W. Strode
mstrode@leetemecula.com
D 951.445.4508
License #00798900

Brian Bielatowicz
bbielatowicz@leetemecula.com
D 951.445.4515
License #01269887

No warranty or representation has been made to the accuracy of the foregoing information. Terms of sale or lease and availability are subject to change or withdrawal without notice. Lee & Associates Commercial Real Estate Services, Inc. - Riverside. 25240 Hancock Avenue, Suite 100 - Murrieta, CA 92562 Corporate ID# 01048055

Property is ideally suited for:

- **Luxury Car Dealership:** Property is located adjacent to Mercedes Benz and near Boris Said BMW, and new Audi dealership.
- **Corporate Office Center:** The property was previously entitled for a 240,000 sf Class A corporate center, with Three (3) ±80,000 sf office buildings and 790 parking spaces
- Property is graded with pads ready and all utilities in Jackson Avenue.

Property Address	Jackson Ave & Arboretum Way, Murrieta, CA
APN	910-100-024; 910-100-022; 910-100-023
Land Size	±10.58 Acres
Lot SF	±460,864.80
Zoning	Office
Proposed Use	Office/Retail/Commercial

DEMOGRAPHICS

DESCRIPTION	1 MILE	3 MILE	5 MILE
Population	11,768	85,828	188,408
Total Households	3,541	28,401	60,693
Median HH Income	\$82,799	\$70,214	\$80,392
Daytime Population	9,406	55,976	69,843

Nick Corbell

ncorbell@leetemeccula.com
D 951.445.4522
License #01932821

Nick Earle

nearle@leetemeccula.com
D 951.445.4528
License #01916982

Michael W. Strode

mstrode@leetemeccula.com
D 951.445.4508
License #00798900

Brian Bielatowicz

bbielatowicz@leetemeccula.com
D 951.445.4515
License #01269887

No warranty or representation has been made to the accuracy of the foregoing information. Terms of sale or lease and availability are subject to change or withdrawal without notice. Lee & Associates Commercial Real Estate Services, Inc. - Riverside. 25240 Hancock Avenue, Suite 100 - Murrieta, CA 92562 Corporate ID# 01048055



TRAFFIC COUNTS

±180,000 CPD

**I-15 FREEWAY AT
WINCHESTER ROAD**

±10,000 CPD

**JACKSON AVE AT
DATE STREET**



JACKSON AVE

Nick Corbell

ncorbell@leetemecula.com
D 951.445.4522
License #01932821

Nick Earle

nearle@leetemecula.com
D 951.445.4528
License #01916982

Michael W. Strode

mstrode@leetemecula.com
D 951.445.4508
License #00798900

Brian Bielatowicz

bbielatowicz@leetemecula.com
D 951.445.4515
License #01269887

No warranty or representation has been made to the accuracy of the foregoing information. Terms of sale or lease and availability are subject to change or withdrawal without notice. Lee & Associates Commercial Real Estate Services, Inc. - Riverside, 25240 Hancock Avenue, Suite 100 - Murrieta, CA 92562 Corporate ID# 01048055



10.58 NET COMMERCIAL ACRES FOR SALE

MURRIETA CREEKSIDE

JACKSON AVE & ARBORETUM WAY | MURRIETA, CA

Area Map



Nick Corbell
ncorbell@leetemecula.com
D 951.445.4522
License #01932821

Nick Earle
nearle@leetemecula.com
D 951.445.4528
License #01916982

Michael W. Strode
mstrode@leetemecula.com
D 951.445.4508
License #00798900

Brian Bielatowicz
bbielatowicz@leetemecula.com
D 951.445.4515
License #01269887

No warranty or representation has been made to the accuracy of the foregoing information. Terms of sale or lease and availability are subject to change or withdrawal without notice. Lee & Associates Commercial Real Estate Services, Inc. - Riverside. 25240 Hancock Avenue, Suite 100 - Murrieta, CA 92562 Corporate ID# 01048055

Property Photograph



Nick Corbell
ncorbell@leetemecula.com
D 951.445.4522
License #01932821

Nick Earle
nearle@leetemecula.com
D 951.445.4528
License #01916982

Michael W. Strode
mstrode@leetemecula.com
D 951.445.4508
License #00798900

Brian Bielatowicz
bbielatowicz@leetemecula.com
D 951.445.4515
License #01269887

No warranty or representation has been made to the accuracy of the foregoing information. Terms of sale or lease and availability are subject to change or withdrawal without notice. Lee & Associates Commercial Real Estate Services, Inc. - Riverside. 25240 Hancock Avenue, Suite 100 - Murrieta, CA 92562 Corporate ID# 01048055

10.58 NET COMMERCIAL ACRES FOR SALE

MURRIETA CREEKSIDE

JACKSON AVE & ARBORETUM WAY | MURRIETA, CA

Future French Valley Parkway Interchange

Purpose

Reduce congestion and improve safety by relieving the I-15/Winchester Road interchange and minimizing weaving movements on I-15 between Winchester Road and the I-15/I-215 Junction

Features

- A new arterial, French Valley Parkway, connecting Jefferson Avenue and Ynez Road
- A new interchange connecting French Valley Parkway to I-15
- A new collector/distributor system along I-15 between Winchester Road and the I-15/I-215 Junction
- Modifications to the I-15/Winchester Road interchange such as ramp widening for additional lanes

Phasing (3 Phase Implementation)

Phase I

Shown in red on aerial map. Construction Complete: Designed to provide interim relief by widening the existing southbound off-ramp at Winchester Road, constructing the southbound off-ramp at the future French Valley Parkway, and constructing the westbound portion of French Valley Parkway between the new off-ramp and Jefferson Avenue.

Phase II

Shown in blue on aerial map. Designed to provide interim relief by constructing the northbound collector/distributor system along I-15.

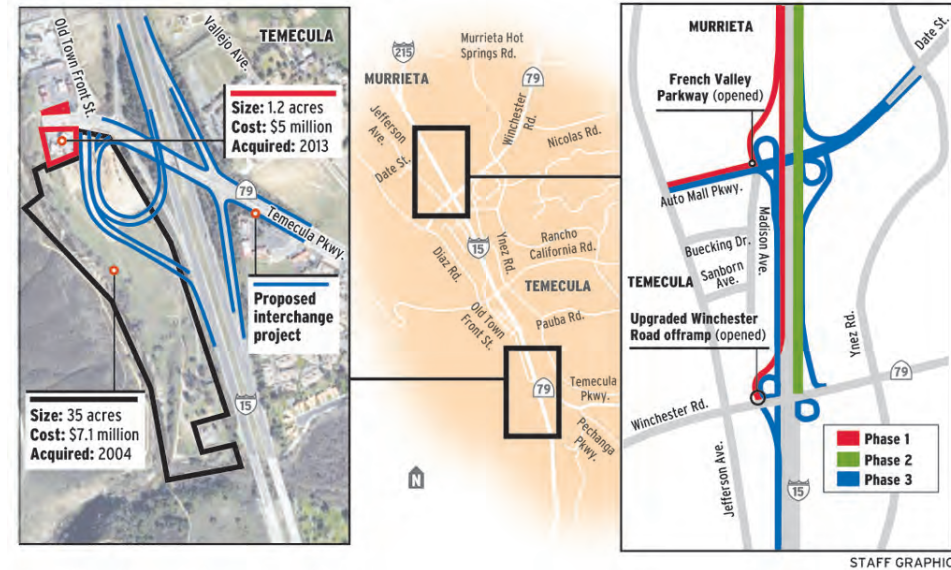
- Phase II Status: Design phase November 2016 - December 2019.
- Phase II Contact: Kendra Hannah-Meistrell, City of Temecula Project Manager 951-693-3949

Phase III

Shown in green on aerial map. Future Work: Designed to provide ultimate relief by constructing the balance of French Valley Parkway from Jefferson Avenue to Ynez Road, the full interchange connection to I-15, and the southbound collector/distributor system along I-15.

Interstate 15 evolution

A new interchange at Temecula Parkway, which could open in 2018, and a new bypass road at Winchester Road interchange, possibly by 2021, will help transform traffic patterns in the Temecula/Murrieta region.



STAFF GRAPHIC

Nick Corbell

ncorbell@leetemecula.com
D 951.445.4522
License #01932821

Nick Earle

nearle@leetemecula.com
D 951.445.4528
License #01916982

Michael W. Strode

mstrode@leetemecula.com
D 951.445.4508
License #00798900

Brian Bielatowicz

bbielatowicz@leetemecula.com
D 951.445.4515
License #01269887

No warranty or representation has been made to the accuracy of the foregoing information. Terms of sale or lease and availability are subject to change or withdrawal without notice. Lee & Associates Commercial Real Estate Services, Inc. - Riverside, 25240 Hancock Avenue, Suite 100 - Murrieta, CA 92562 Corporate ID# 01048055