

For Lease

600 Reed Road
Broomall, PA 19008

\$23.00
plus Electric



Accepting Medical Office Tenants Recently Revonated with Fresh Paint and New Carpets

Property Highlights

- Well capitalized ownership
- Easy access to I-476 (Blue Route)
- ADA accessible
- Ample parking
- Prominent signage on Reed Road
- Ownership and management on site

Availability

- 1st Floor
 - Suite 102 - 7,042 RSF
- 2nd Floor
 - Suite 201 - 3,971 RSF
 - Suite 214 - 1,643 RSF

7/1,000 SF parking ratio

For more information:

Thomas S. Bond

tbond@geisrealty.com
(215) 568-1755

Lou Tonon

ltonon@geisrealty.com
(215) 568-1590

Dana Wilber

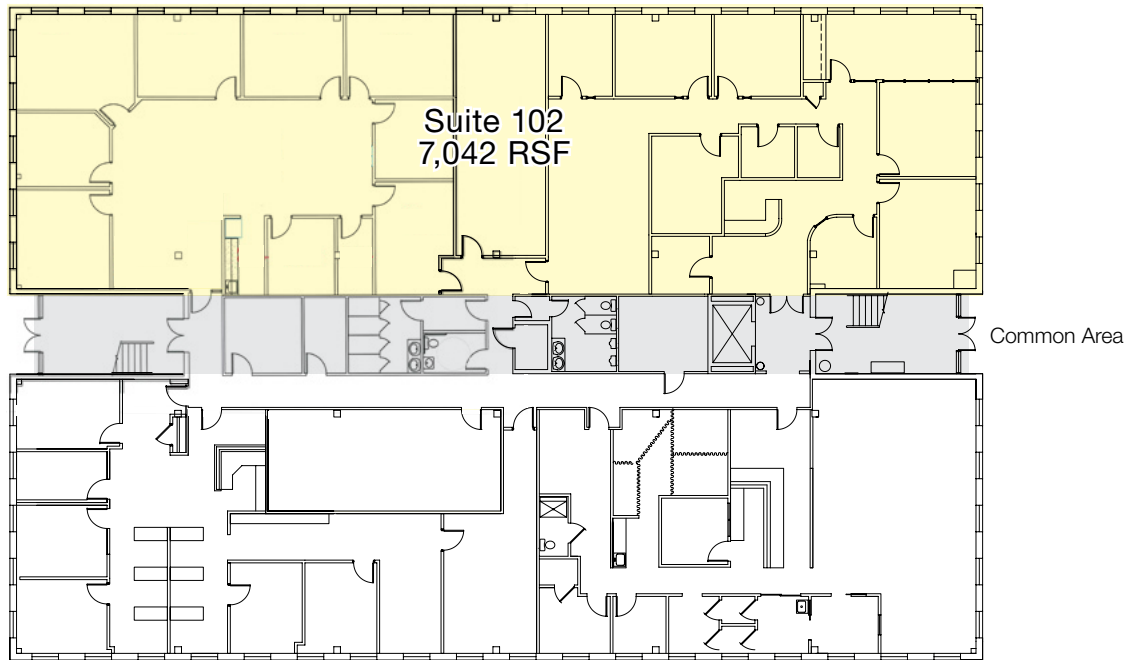
dwilber@geisrealty.com
(215) 701-3266



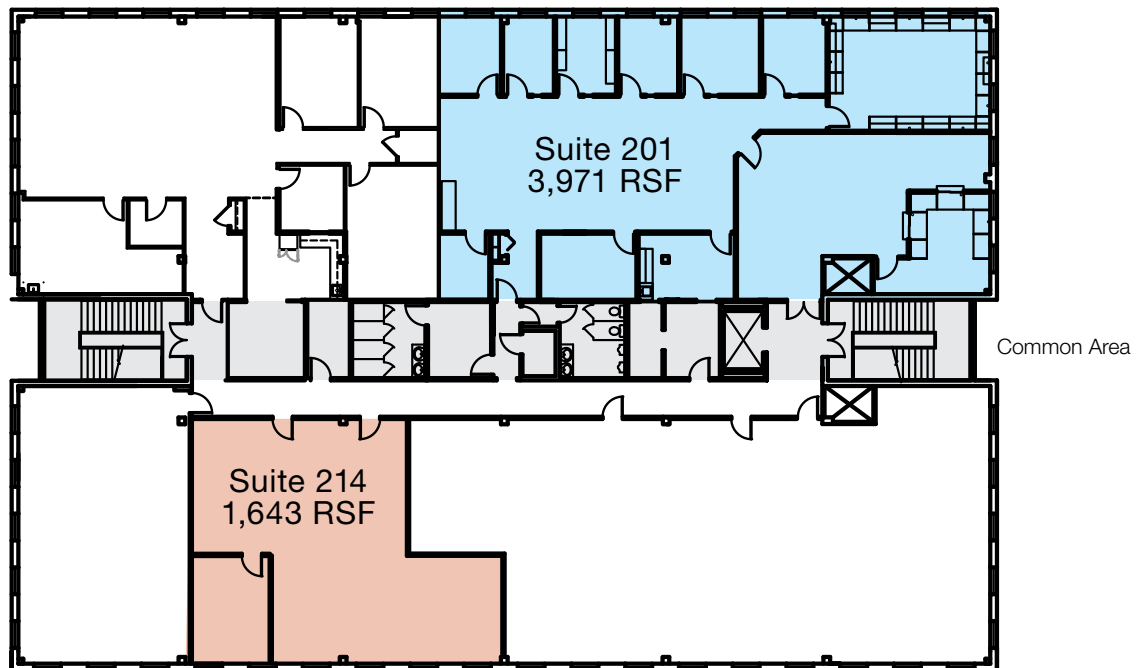
600 Reed Road
Broomall, PA 19008

Office Space Available
Accepting Medical Tenants

1st Floor



2nd Floor



For more information:

Thomas S. Bond
tbond@geisrealty.com
(215) 568-1755

Lou Tonon
ltonon@geisrealty.com
(215) 568-1590

Dana Wilber
dwilber@geisrealty.com
(215) 701-3266

Duane Morris Plaza // 30 South 17th Street, Suite 210, Philadelphia, PA 19103 // (215) 568-7222 Tel // (215) 568-5043 Fax // geisrealty.com

NO WARRANTY OR REPRESENTATION, EXPRESS OR IMPLIED, IS MADE AS TO THE ACCURACY OF THE INFORMATION CONTAINED HEREIN, AND THE SAME IS SUBMITTED SUBJECT TO ERRORS, OMISSIONS, CHANGE OF PRICE, RENTAL OR OTHER CONDITIONS, PRIOR SALE, LEASE OR FINANCING, OR WITHDRAWAL WITHOUT NOTICE, AND OF ANY SPECIAL LISTING CONDITIONS IMPOSED BY OUR PRINCIPALS NO WARRANTIES OR REPRESENTATIONS ARE MADE AS TO THE CONDITION OF THE PROPERTY OR ANY HAZARDS CONTAINED THEREIN ARE ANY TO BE IMPLIED.

600 Reed Road
Broomall, PA 19008

Office Space Available
Accepting Medical Tenants



For more information:

Thomas S. Bond
tbond@geisrealty.com
(215) 568-1755

Lou Tonon
ltonon@geisrealty.com
(215) 568-1590

Dana Wilber
dwilber@geisrealty.com
(215) 701-3266

Duane Morris Plaza // 30 South 17th Street, Suite 210, Philadelphia, PA 19103 // (215) 568-7222 Tel // (215) 568-5043 Fax // geisrealty.com

NO WARRANTY OR REPRESENTATION, EXPRESS OR IMPLIED, IS MADE AS TO THE ACCURACY OF THE INFORMATION CONTAINED HEREIN, AND THE SAME IS SUBMITTED SUBJECT TO ERRORS, OMISSIONS, CHANGE OF PRICE, RENTAL OR OTHER CONDITIONS, PRIOR SALE, LEASE OR FINANCING, OR WITHDRAWAL WITHOUT NOTICE, AND OF ANY SPECIAL LISTING CONDITIONS IMPOSED BY OUR PRINCIPALS NO WARRANTIES OR REPRESENTATIONS ARE MADE AS TO THE CONDITION OF THE PROPERTY OR ANY HAZARDS CONTAINED THEREIN ARE ANY TO BE IMPLIED.