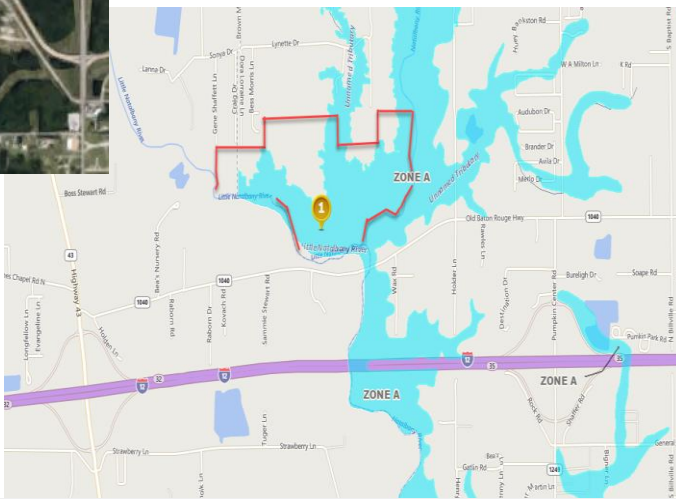


For Sale  
**Vacant Land**

**235 Acres-  
\$2,500/Acre  
Livingston  
North/  
Tangipahoa  
Parish**

Livingston,  
Louisiana



**Property Features**

- Approximately 235 Acres
- Can be subdivided (min 10 acres)
- Near I-12 and Hwy 43 intersection
- Near Old Baton Rouge Hwy and I-12
- \$2,500/per acre

For more information:

**Rene Roberts**  
225.936.4687 • roberts@latterblum.com

LICENSED IN LOUISIANA. NO WARRANTY OR REPRESENTATION, EXPRESS OR IMPLIED, IS MADE AS TO THE ACCURACY OF THE INFORMATION CONTAINED HEREIN, AND THE SAME IS SUBMITTED SUBJECT TO ERRORS, OMISSIONS, CHANGE OF PRICE, RENTAL OR OTHER CONDITIONS, PRIOR SALE, LEASE OR FINANCING, OR WITHDRAWAL WITHOUT NOTICE, AND OF ANY SPECIAL LISTING CONDITIONS IMPOSED BY OUR PRINCIPALS. NO WARRANTIES OR REPRESENTATIONS ARE MADE AS TO THE CONDITION OF THE PROPERTY OR ANY HAZARDS CONTAINED THEREIN ARE ANY TO BE IMPLIED.

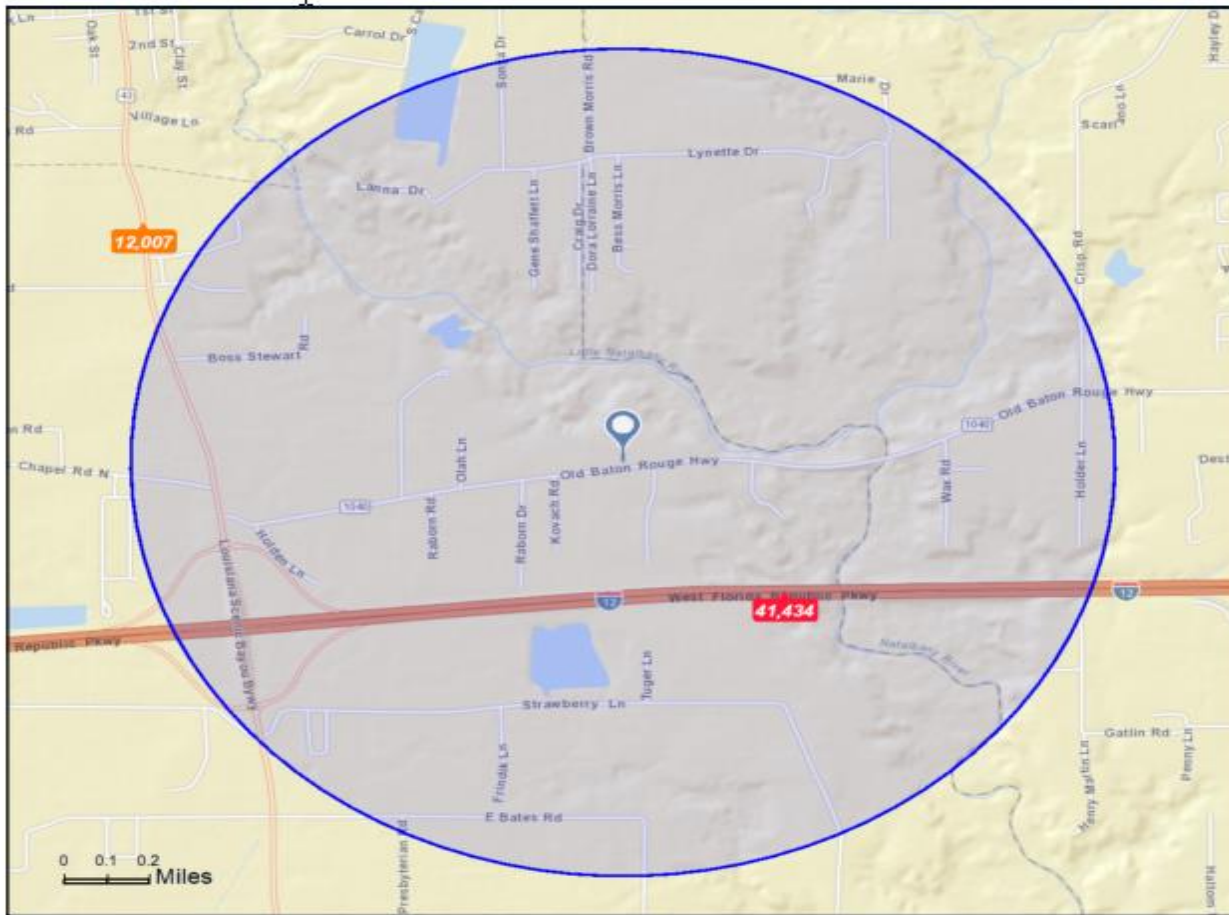
1700 City Farm Drive,  
Baton Rouge, LA 70806 USA  
225.295.0800  
[www.latterblum.com](http://www.latterblum.com)



# Traffic Count Map

24603 Old Baton Rouge Hwy, Hammond, Louisiana, 70403  
Rings: 1 mile radii

Prepared by Esri  
Latitude: 30.48353  
Longitude: -90.56556



- Average Daily Traffic Volume**
- ▲ Up to 6,000 vehicles per day
  - ▲ 6,001 - 15,000
  - ▲ 15,001 - 30,000
  - ▲ 30,001 - 50,000
  - ▲ 50,001 - 100,000
  - ▲ More than 100,000 per day



Source: ©2016 Kalibrate Technologies

December 30, 2016

©2016 Esri

Page 1 of 1

For Sale  
**Vacant Land**

## 235 Acres- Livingston North

Livingston & Tangipahoa Parish,  
Louisiana

For more information:

**Rene' Roberts**

225.936.4687 • [rroberts@latterblum.com](mailto:rroberts@latterblum.com)

