

For Lease or BTS

Retail and Commercial Space

105-115 S. Main Street

Mount Prospect, IL 60056



- Up to 10,000 SF of new construction or Build to Suit space available
- Located in the downtown center of Mount Prospect
- Across from the Metra Northwest Line
- Bus service on the corner of Main Street & Northwest Highway
- Visibility from Northwest Highway which has 34,307 VPD
- High residential population and average household income
- 400+ space municipal parking garage one block away

- Nearby retailers include Starbucks, Chase Bank, Subway, Continental Bakery, Oberweis and Athletic Physical Therapy

DEMOGRAPHIC SUMMARY

	RADIUS		
	1 MILE	3 MILES	5 MILES
AVERAGE HHI	\$98,407	\$88,601	\$84,275
DAYTIME POPULATION	11,645	105,947	328,639
RESIDENTIAL POPULATION	16,114	129,629	306,812

TRAFFIC COUNTS

S. MAIN STREET	12,500 VPD
W. NORTHWEST HIGHWAY	34,307 VPD

Doug Renner
312.275.3137
doug.renner@baumrealty.com

Trevor Jack
312.275.3128
trevor@baumrealty.com

Mark Fredericks
312.275.3109
mark@baumrealty.com



For Lease or BTS

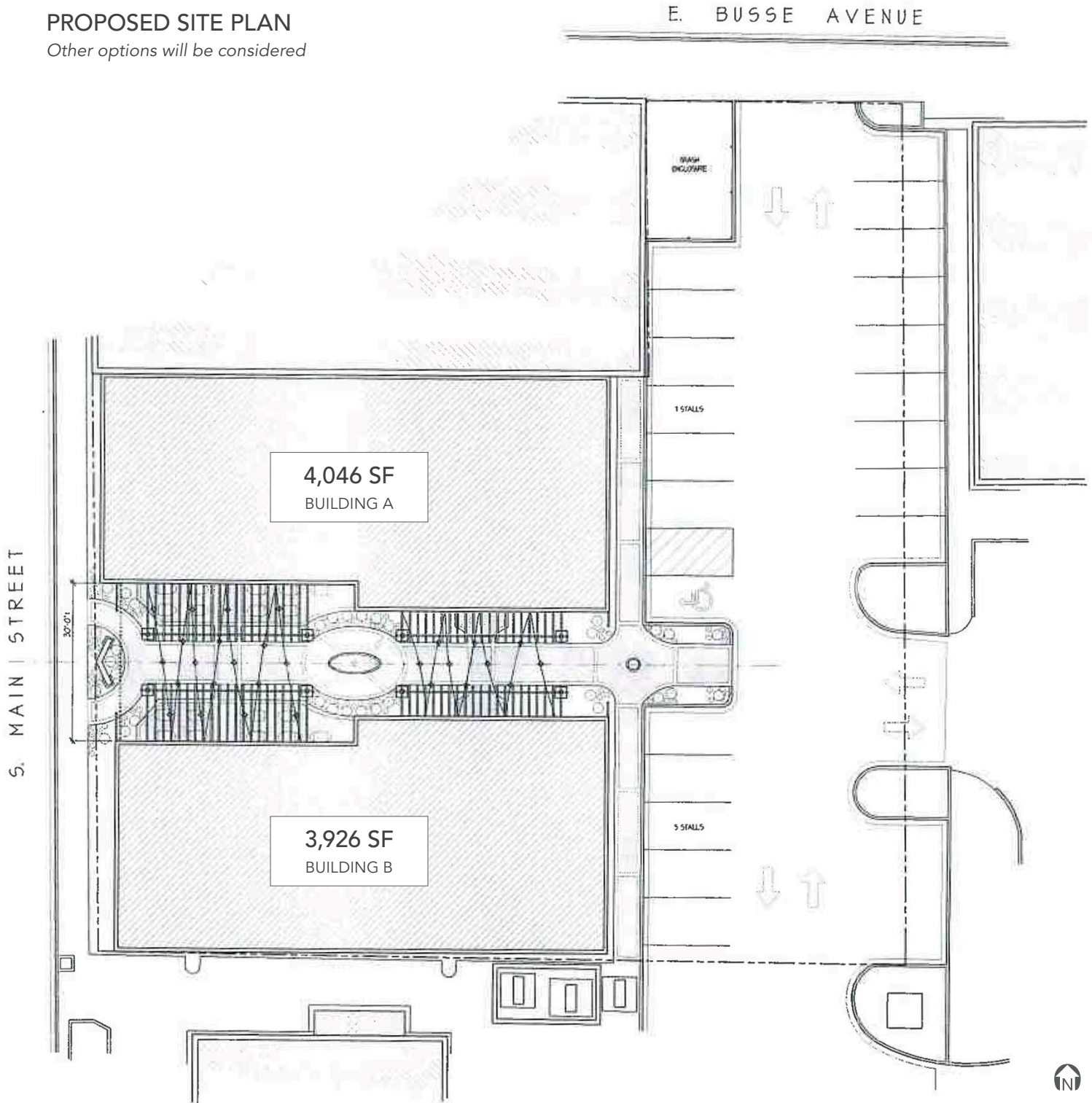
Retail and Commercial Space

105-115 S. Main Street

Mount Prospect, IL 60056

PROPOSED SITE PLAN

Other options will be considered



Doug Renner
312.275.3137
doug.renner@baumrealty.com

Trevor Jack
312.275.3128
trevor@baumrealty.com

Mark Fredericks
312.275.3109
mark@baumrealty.com

