

FOR LEASE
PARK PLACE OFFICE BUILDING
4915 SW Griffith Drive
Beaverton OR 97005



Randy Hoaglin
randyh@crrealestate.com



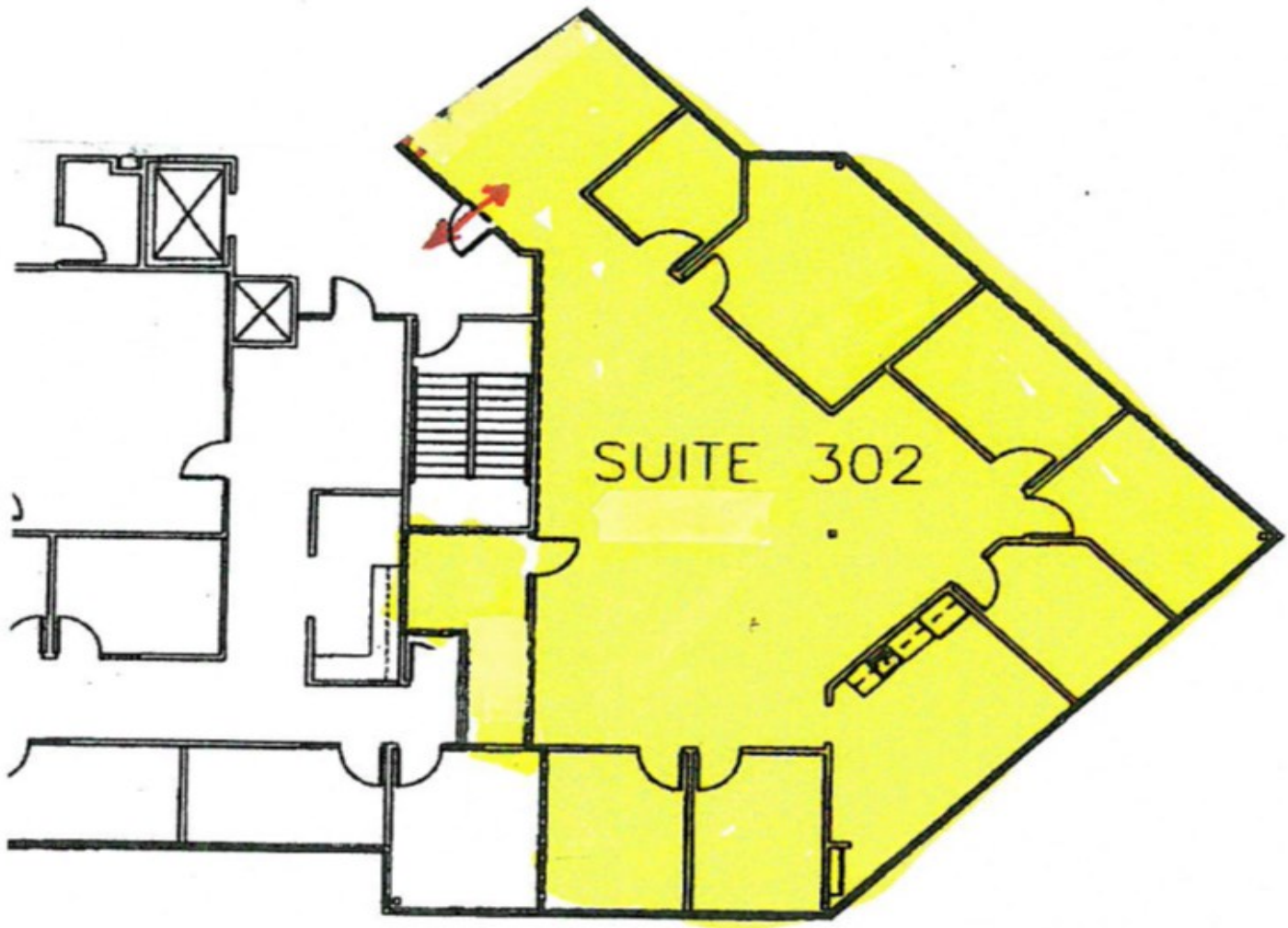
9400 SW Barnes Rd.
Suite 400
Portland, OR 97205
503.224.9554

- **Quality office space in Central Beaverton. Easy hwy access, across from Beaverton Fred Meyer.**
- **29,422 SQ FT Three story office building.**
- **Elevator served.**
- **Onsite parking; 96 stalls plus 4 handicap.**
- **Parking ratio approximately 3 per 1000 SQ FT.**
- **Park like setting.**

Suite 302: 2946 Sq. Ft. Great window line facing Griffith Park. Kitchenette, Break room, server/storage room, bull pen area, building pass key.

SEE FLOOR PLANS

\$19.00 SQ FT/FULL SERVICE
Available Now



The information above has been obtained from sources believed reliable. While we do not doubt its accuracy, we have not verified it and make no guarantee, warranty or representation about it. It is your sole responsibility to independently confirm its accuracy and completeness. Any projections, opinions, assumptions or estimates used are for example only and do not represent the current or future performance of the property. The value of this transaction to you depends on tax and other factors which should be evaluated by your tax, financial and legal advisors. You and your advisors should conduct a careful, independent investigation of the property to determine to your satisfaction the suitability of the property for your needs.