

East Mountain Commons
613 Baltimore Drive, Wilkes-Barre, PA 18702



Superior Class A Office For Lease



Located in the Corporate Center at East Mountain

Property Highlights

- 1st Floor 12,190 SF (can be subdivided as small as 5,000 SF)
- Two Elevators
- Sprinklered
- Parking Ratio: 4.2 per 1,000 SF

For more information, please contact:



Mike Detter | SIOR
mdetter@geisrealty.com
(570) 468-8810

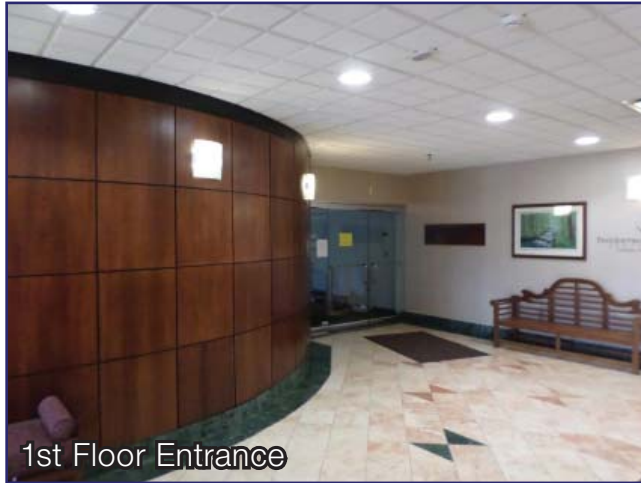
200 Abington Executive Park | Suite 202 | Clarks Summit, PA 18411
996 Old Eagle School Road | Suite 1117 | Wayne, PA 19087
www.geisrealty.com



No warranty or representation, express or implied, is made as to the accuracy of the information contained herein, and the same is submitted subject to errors, omissions, change of price, rental or other conditions, prior sale, lease or financing, or withdrawal without notice, and of any special listing conditions imposed by our principals no warranties or representations are made as to the condition of the property or any hazards contained therein are any to be implied.

613 Baltimore Drive

Wilkes-Barre, PA 18702



1st Floor Entrance



Lobby



Outdoor Patio

For more information, please contact:



Mike Detter | SIOR
mdetter@geisrealty.com
(570) 468-8810

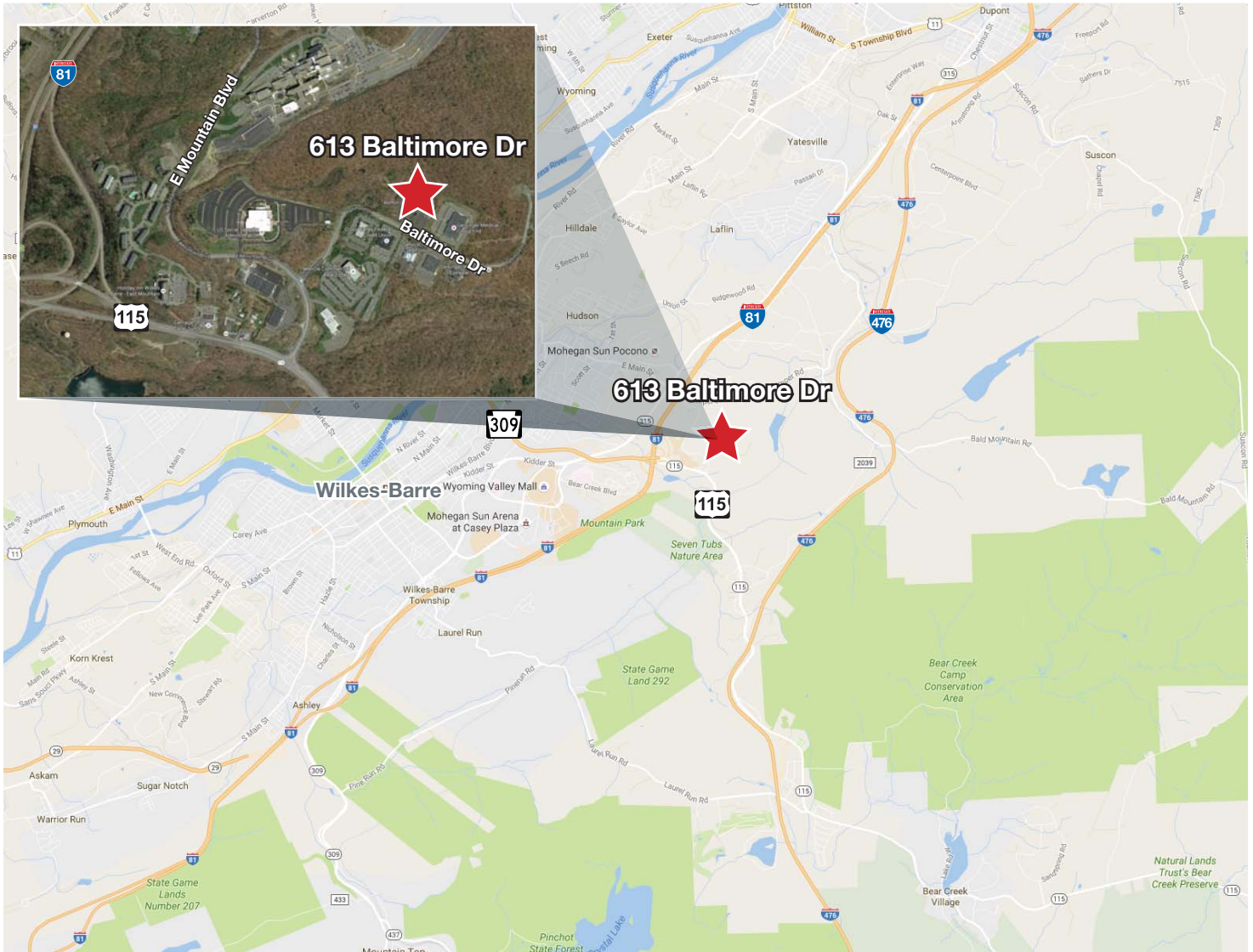
200 Abington Executive Park | Suite 202 | Clarks Summit, PA 18411
996 Old Eagle School Road | Suite 1117 | Wayne, PA 19087
www.geisrealty.com



613 Baltimore Drive

Wilkes-Barre, PA 18702

Quick access to I-81 and PA Turnpike (I-476)



For more information, please contact:



Mike Detter | SIOR
mdetter@geisrealty.com
(570) 468-8810

200 Abington Executive Park | Suite 202 | Clarks Summit, PA 18411
996 Old Eagle School Road | Suite 1117 | Wayne, PA 19087
www.geisrealty.com

