



RETAIL/OFFICE FOR LEASE

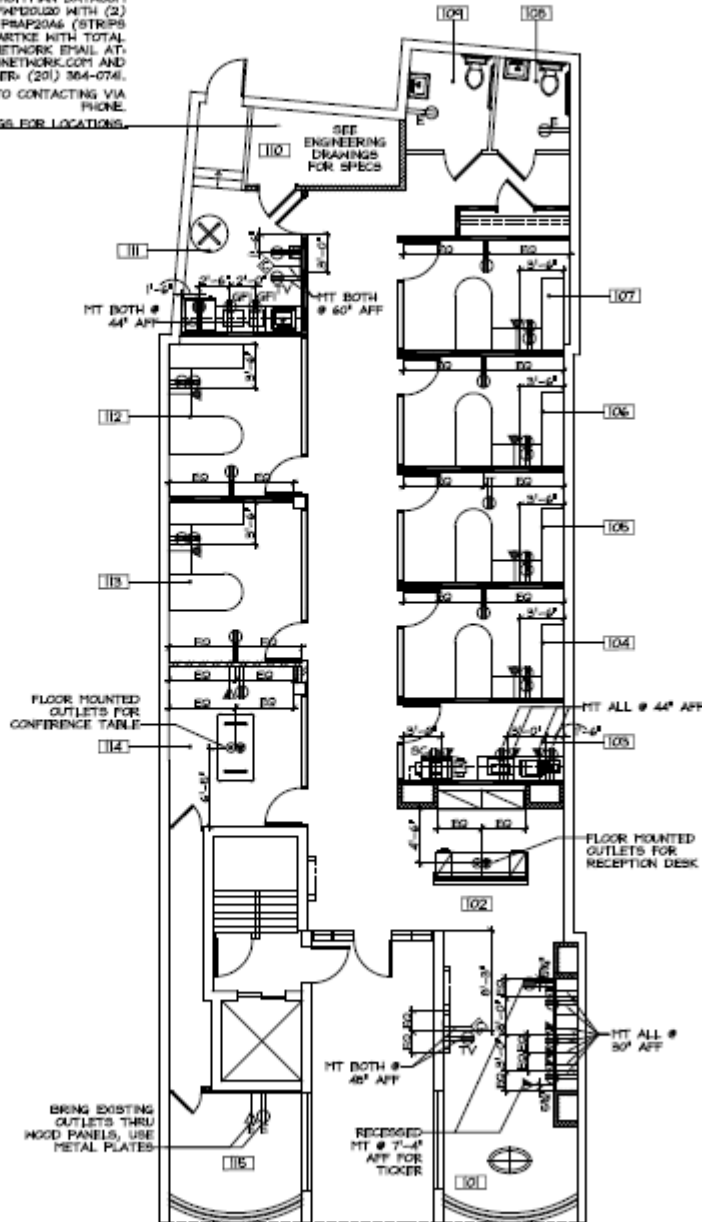
22 N PARK PLACE

MORRISTOWN, NEW JERSEY

CBRE

FLOOR PLAN

SERVER CABINET FOR THIS ROOM TO BE
 CABINET DIMENSIONS: 20"W x 37"H x 20"D
 CABINET SPECIFICATION: HOFFMAN DATACOM
 20U CABINET - PREPARED WITH (2)
 HOFFMAN POWER STRIPS - PRA2006 (STRIPS
 BY GC) CONTACT: RON BARTKE WITH TOTAL
 SOLUTIONS NETWORK EMAIL AT:
 RBARTKE@TOTALSOLUTIONSNETWORK.COM AND
 PHONE NUMBER: (201) 364-0746.
 PLEASE EMAIL PRIOR TO CONTACTING VIA
 PHONE.
 SEE ENGINEERING DRAWINGS FOR LOCATIONS.



Beautiful first floor space located "on the Green" in the heart of downtown Morristown, off the corner of Washington St.

Area Co-tenants: Provident, Athleta, Charles Schwab, Playa Bowls, Starbucks and Committed Pig.

PROPERTY HIGHLIGHTS

AVAILABILITY:

3,240 SF First Floor Retail/Office Space (Former TD Ameritrade). Space has 2 ADA restrooms and can be vented for cooking.

NNN: \$9.28/SF

ASKING RENTAL RATE:

Upon request.





DANIEL CASEY
 First Vice President
 +1 973 224 3817
 Daniel.casey@cbre.com

MARTA VILLA
 Senior Vice President
 +1 973 715 8385
 marta.villa@cbre.com

SAMUEL BERNHAUT
 Senior Vice President
 +1 917 270 6204
 Sam.bernhaut@cbre.com

© 2022 CBRE, Inc. All rights reserved. This information has been obtained from sources believed reliable but has not been verified for accuracy or completeness. You should conduct a careful, independent investigation of the property and verify all information. Any reliance on this information is solely at your own risk.

