

ODENTON COMMERCE CENTRE - RETAIL/OFFICE

1413 Annapolis Road, Odenton, MD



- ^{only} 990 & 1200 sf available
- Two story/Elevator served
- \$20.00 sf + utilities
- Retail & Office
- Great visibility
- Zoning: Town Center
- Traffic Counts:

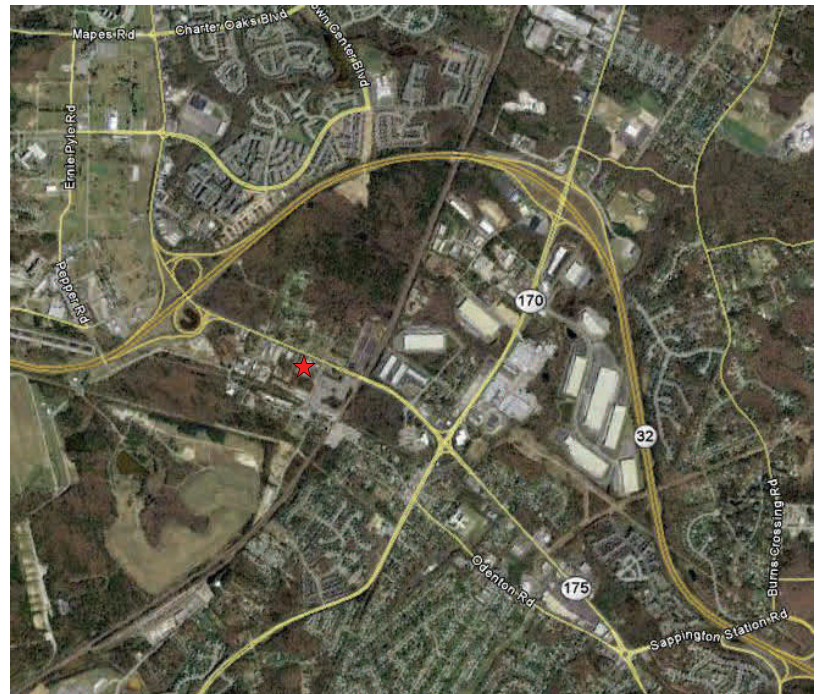
@ Rte 175	25,000
@ Rte 32	50,000
- Near two PUDs of 8,000 homes and 1,100+ newly constructed residences
- Just 2 minutes from Fort Meade and 2 blocks to MARC train

IN THE ODENTON TOWN CENTER CORE

Odenton Town Center

Daytime Population 175,612
Average HH Income \$102,285

The Odenton population increased 80.8% from the 2000 to the 2010 census and the median household income rose 51.8%, which is 40% higher than the Maryland state average.
City-data.com



Contact:
Stuart Title
stuart@ajprop.net
410-551-9116

Disclaimer: All information regarding property(ies) offered is from sources deemed reliable; but no warranty is made as to the accuracy thereof and same is submitted subject to errors, omissions, change of price or conditions, prior sale, rental or withdrawal without notice.



www.ajprop.net
8373 Piney Orchard Pky., Odenton, Md.

