

THE EXCHANGE



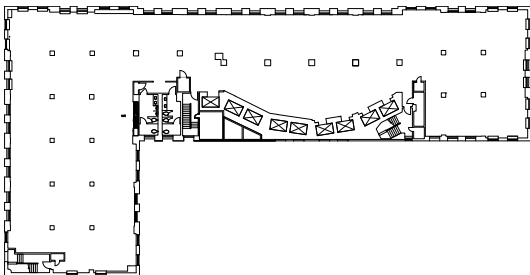
Welcome to The Exchange:
Where conversations start,
and communities are built.

Built in 1930, The Exchange is Seattle's premier art-deco building. Designed by the John Graham Company to house the Seattle Stock Exchange and some of the city's most ambitious people. Today, this iconic building has been modernized to support today's most innovative companies. It is a place for those with a point of view and passion for building community and their businesses.

Pioneers of a new era

This LEED-EB Platinum Certified and Energy Star-rated building all about form and function. There is inspiration in the spaces with the lingering presence of great innovators that once occupied the hallways - from Edison Lamp Works, to General Electric, and Standard Oil. Now occupied by forward-thinking teams that will change their industries from within these walls - this is the home for you.

Representative floor plan





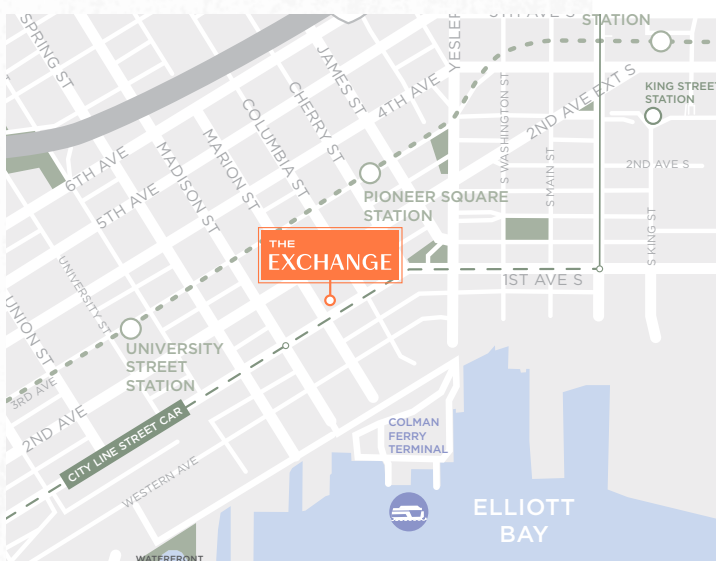
Character-rich spaces

- 17,000 sf floor plate
- Open ceilings and abundant natural light
- Fully updated mechanical systems
- Stunning historic art deco lobby



Places for community

- Private and communal spaces available to tenants
- On-site and easy access to local cafes, bars and lunchtime spots
- State-of-the-art fitness center, locker rooms & showers



Close to everything

- Located in Seattle's thriving downtown, blocks from the waterfront redevelopment and streetcar stop
- + 99 Walkscore / 100 transit score
- Close to ferry terminals, public transportation and highway corridors



Jones Lang LaSalle Brokerage, Inc.
 © 2020 Jones Lang LaSalle IP, Inc. All rights reserved. All information contained herein is from sources deemed reliable; however, no representation or warranty is made to the accuracy thereof.

Lisa Stewart +1 206 607 1786 lisa.stewart@am.jll.com
 Jim Allison +1 206 607 1787 jim.allison@am.jll.com