

# OFFICE SPACE FOR LEASE

Highland Village, TX  
921 SF – 1,435 SF or 2,356 SF



**Location:** 2330 FM 407 – Justin Rd. – Suites 100 & 200

**Size:** Suite 100 – 1,435 SF: Reception - Lg. Conf. - 3 Lg. Offices + coffee bar.  
Suite 200 - 921 SF: Reception – 3 Offices + storage

**2,356 SF – combined!.**

**Rent:** \$17.00 per square-foot + NNN's.

**Available:** Now!

**For further information contact: Rich Muller**

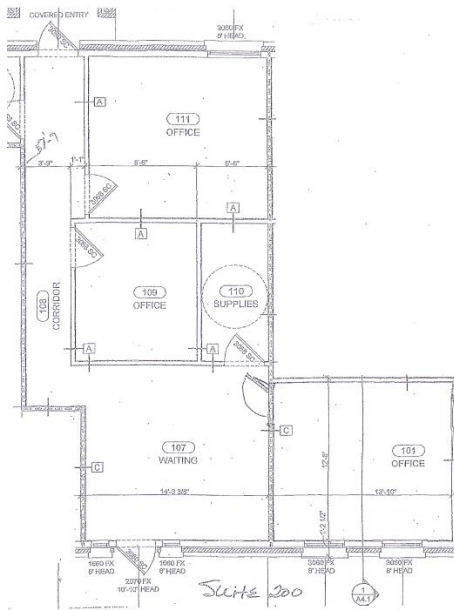


**Vintage Realty**  
2980 Long Prairie Rd., Suite D  
Flower Mound, TX 75022

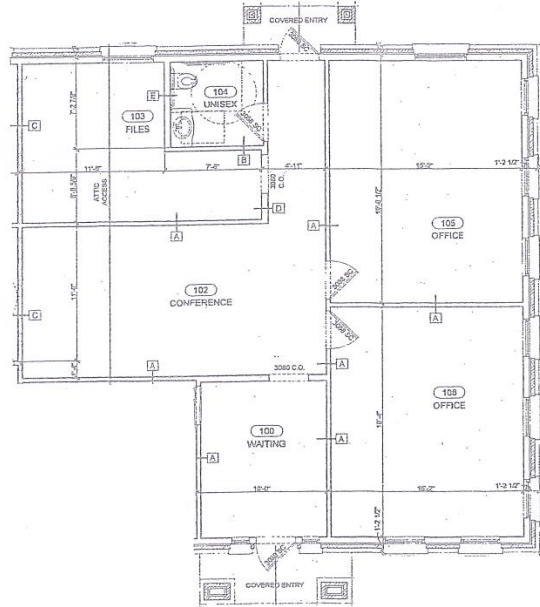
972/355-0669 or Fax 972/355-5477

**E-mail: [Rich@VintageRealty.net](mailto:Rich@VintageRealty.net) or [www.VintageRealty.net](http://www.VintageRealty.net)**

This information is believed to be accurate, but no representation or warranty, express or implied, as to its accuracy or completeness is made by any party. The presentation of this property is submitted subject to errors, omissions, change of price or prior sale or lease or withdrawal without notice.



Suite 200 - 921 SF



Suite 100 - 1,435 SF



This information is believed to be accurate, but no representation or warranty, express or implied, as to its accuracy or completeness is made by any party. The presentation of this property is submitted subject to errors, omissions, change of price or prior sale or lease or withdrawal without notice.