

171 HENRY STREET

Between Jefferson & Rutgers Streets



MEDICAL OR COMMUNITY USE SPACE
IN THE HEART OF TWO BRIDGES

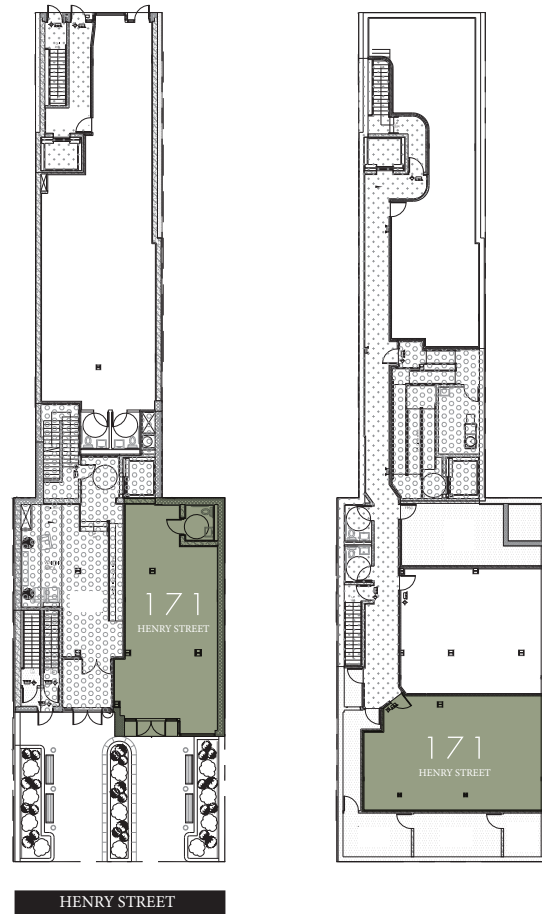
 **SINVIN**
COMMERCIAL REAL ESTATE & ADVISORY

DETAILS:

Ground.....1,056 SF Approx.
Basement.....890 SF Approx.
Frontage.....18'
Ceiling Height.....12'
Term.....Negotiable
Possession.....Immediate
Asking Rent\$7,000/Mo

NEIGHBORS:

- Gouverneur Hospital
- Educational Alliance
- Manny Cantor Center
- Eastwood
- Ice & Vice
- Mission Chinese
- Aeon Books
- Kopitiam
- Bar 169
- Les Enfants de Boheme



Ground

Basement



Ground

Basement

CONTACT:

Steve Rappaport
646.673.8750
steve@sinvin.com

SINVIN
COMMERCIAL REAL ESTATE & ADVISORY

NOTES:

- Community use space at the base of new luxury condo
- New storefront
- Vanilla box with HVAC and ample electric and ADA bathroom
- Dedicated elevator to lower level
- In the heart of burgeoning Two Bridges
- Good for doctor's office, non-profit, or any community use