

HAWKEYE PARK DISTINCTIVE LUXURY OFFICE SPACES FOR LEASE

Highway 111 Frontage at Heart of Rancho Mirage Business Corridor

**GREAT LOCATION!
READY TO MOVE IN!**



SUITES AVAILABLE

69844 (Bldg 1) Suite C	LEASED	1,440 SF
69844 (Bldg 1) Suite D	LEASED	1,680 SF
69844 (Bldg 3) Suite G		1,525 SF
69844 (Bldg 4) Suite K		3,072 SF
69846 (Bldg 2) Suite B	LEASED	1,221 SF
69846 (Bldg 2) Suite C		914 SF
69848 (Bldg 5) Suite 5		3,025 SF

Fully Built-Out Medical Suite
Ready to Move In
Bldg 4 Suite K 3,072 SF
• 7 Exam Rooms with Sinks
• 3 Restrooms

69844/69846/69848 Highway 111, Rancho Mirage, CA 92270

Upscale Professional Rancho Mirage Ambience - Fully Renovated



www.baxleyproperties.com
Phone: 760-773-3310
Fax: 760-773-3013
73712 Alessandro Drive, Ste B-4
Palm Desert, CA 92260

Excellent for Professional Office & Medical User

For Lease: \$1.25/SF Mod. Gross

NEW PRICE!

Irene Di Vito

760-799-1821

irene@baxleyproperties.com

CAL BRE License # 01369784

DISCLAIMER:

The information above has been obtained from sources believed reliable. While we do not doubt its accuracy, we have not verified it and make no guarantee, warranty or representation about it. It is your responsibility to independently confirm its accuracy and completeness. Any projections, opinions, assumptions or estimates used are for example only, and do not represent the current or future performance of the property.

HAWKEYE PARK DISTINCTIVE LUXURY OFFICE SPACES FOR LEASE

69844/69846/69848 Highway 111, Rancho Mirage, CA 92270



*Conveniently Situated in the Center of the Valley with
Proximity to All Desert Communities*

- Private Office Suites in Upscale Environment
- Excellent Ingress and Egress
- Full Size Covered Parking Spaces
- Between Country Club & Frank Sinatra
- Attractive Architecture & Park -Like Setting
- Strong Professional Tenant Mix



DISCLAIMER:
The information above has been obtained from sources believed reliable. While we do not doubt its accuracy, we have not verified it and make no guarantee, warranty or representation about it. It is your responsibility to independently confirm its accuracy and completeness. Any projections, opinions, assumptions or estimates used are for example only, and do not represent the current or future performance of the property.

HAWKEYE PARK DISTINCTIVE LUXURY OFFICE SPACES FOR LEASE

69844/69846/69848 Highway 111, Rancho Mirage, CA 92270

Well-Designed Floor Plans with Reception Areas, Offices, Private Bathrooms



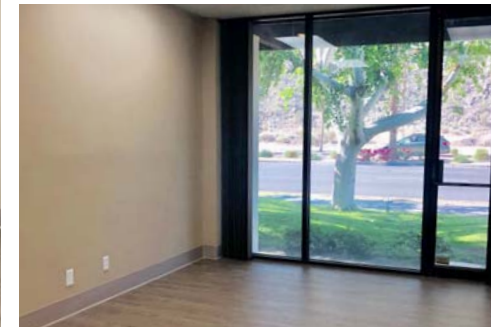
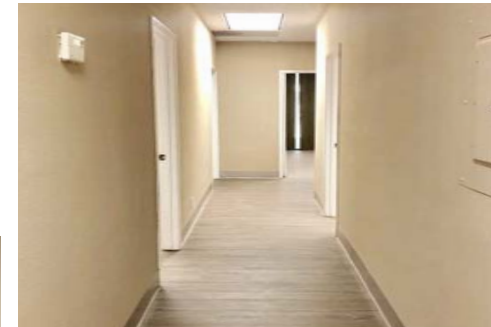
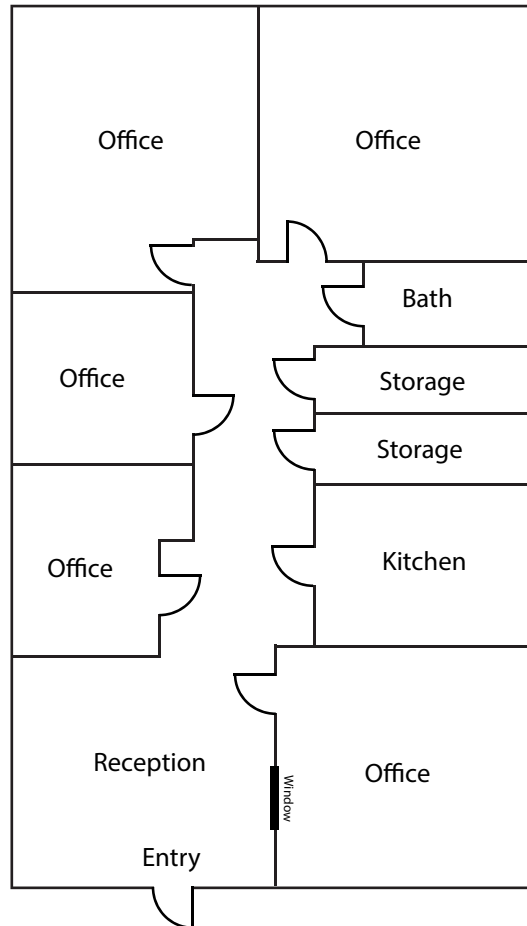
SUITES AVAILABLE			
69844 (Bldg 1)	Suite C	1,440 SF	LEASED
69844 (Bldg 1)	Suite D	1,680 SF	LEASED
69844 (Bldg 3)	Suite G	1,525 SF	
69844 (Bldg 4)	Suite K	3,072 SF	
69846 (Bldg 2)	Suite B	1,221 SF	LEASED
69846 (Bldg 2)	Suite C	914 SF	
69848 (Bldg 5)	Suite 5	3,025 SF	

HAWKEYE PARK DISTINCTIVE LUXURY OFFICE SPACES FOR LEASE

69844/69846/69848 Highway 111, Rancho Mirage, CA 92270

69844 (Building 1)
Suite C - 1,440 SF

LEASED

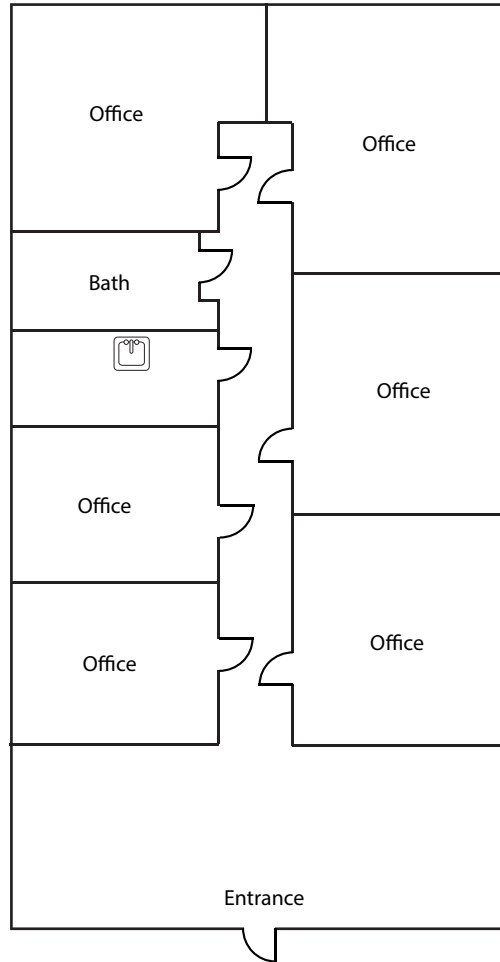


HAWKEYE PARK DISTINCTIVE LUXURY OFFICE SPACES FOR LEASE

69844/69846/69848 Highway 111, Rancho Mirage, CA 92270

69844 (Building 1)
Suite D - 1,680 SF

LEASED

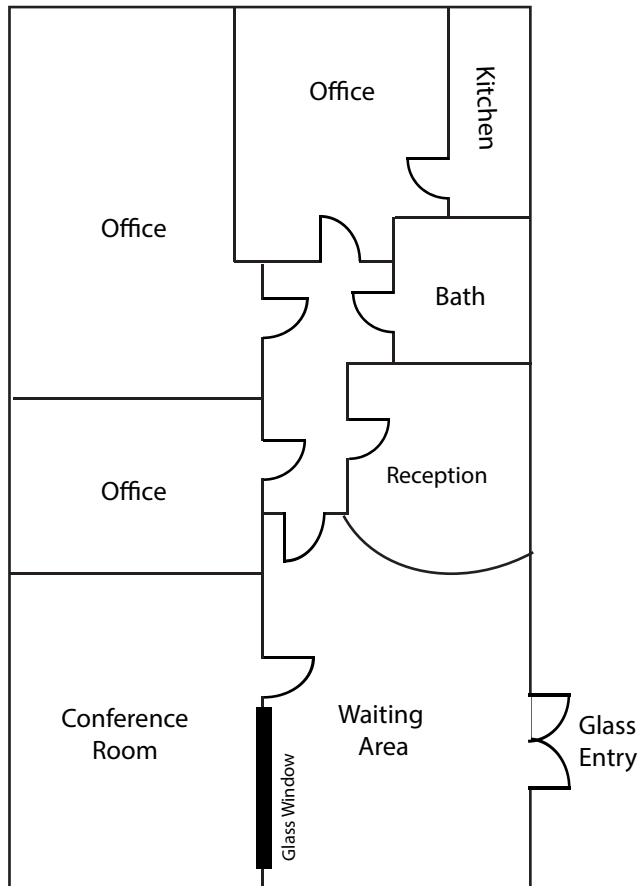


HAWKEYE PARK DISTINCTIVE LUXURY OFFICE SPACES FOR LEASE

69844/69846/69848 Highway 111, Rancho Mirage, CA 92270

69846 (Building 2)
Suite B - 1,221 SF

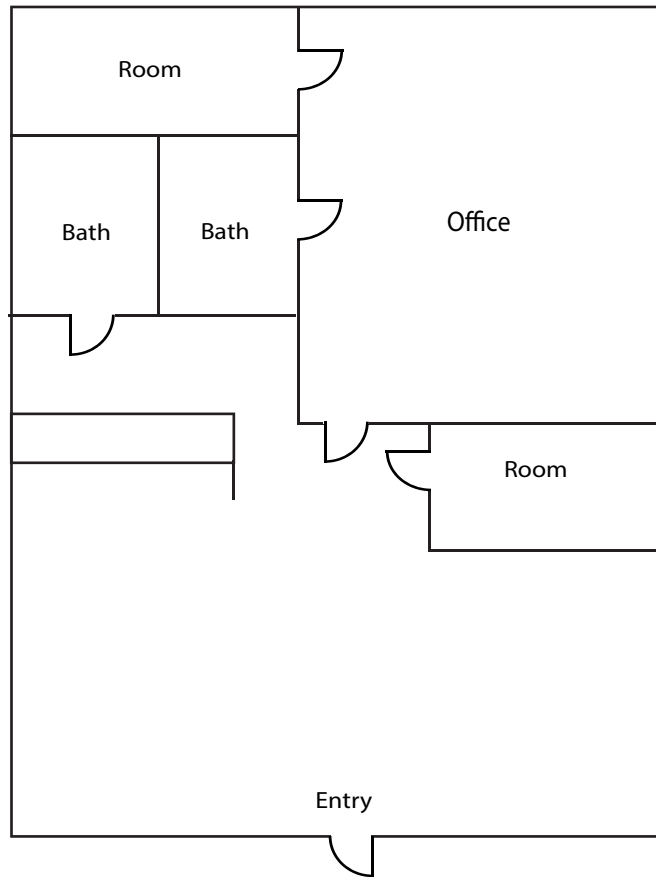
LEASED



HAWKEYE PARK DISTINCTIVE LUXURY OFFICE SPACES FOR LEASE

69844/69846/69848 Highway 111, Rancho Mirage, CA 92270

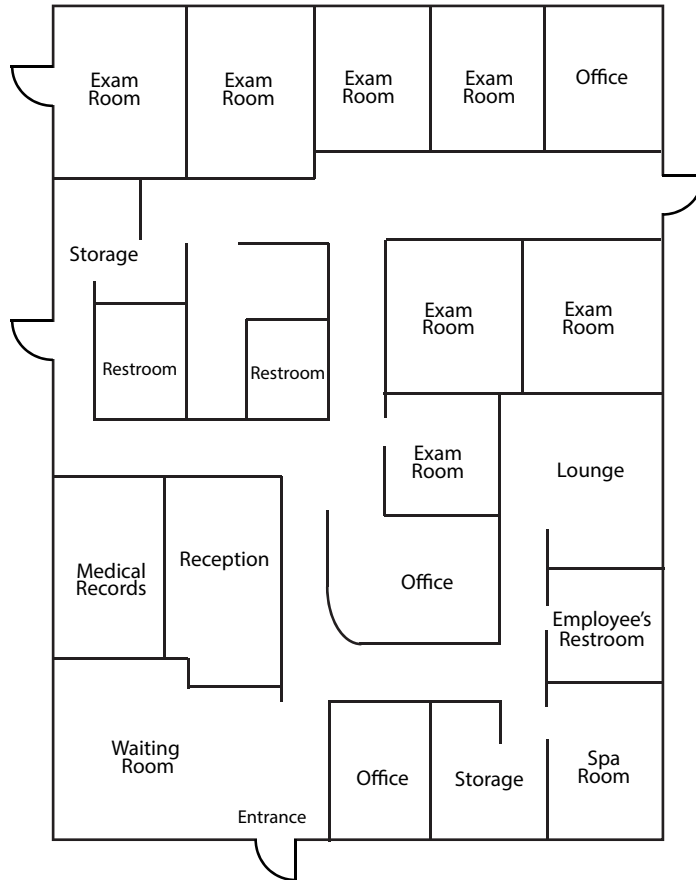
69844 (Building 3) Suite G - 1,525 SF



HAWKEYE PARK DISTINCTIVE LUXURY OFFICE SPACES FOR LEASE

69844/69846/69848 Highway 111, Rancho Mirage, CA 92270

**69844 (Building 4)
Suite K - 3,072 SF**



Ready to Move In -
Fully Built-Out Medical Suite

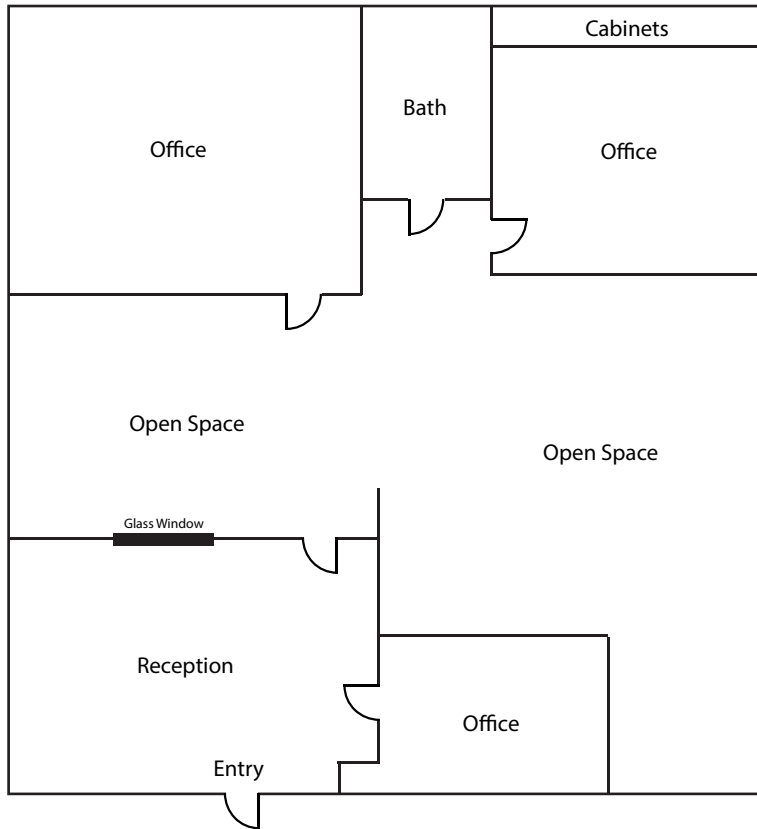
- Sinks in Every Exam Room
- Some Equipment Included



HAWKEYE PARK DISTINCTIVE LUXURY OFFICE SPACES FOR LEASE

69844/69846/69848 Highway 111, Rancho Mirage, CA 92270

69846 (Building 2) Suite C - 914 SF

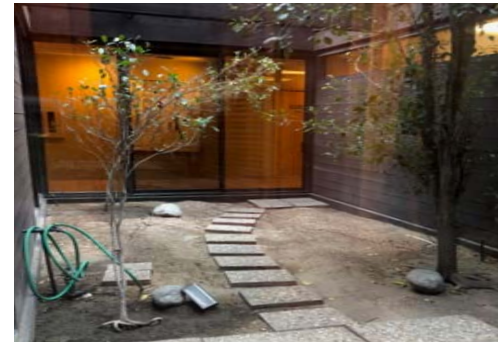
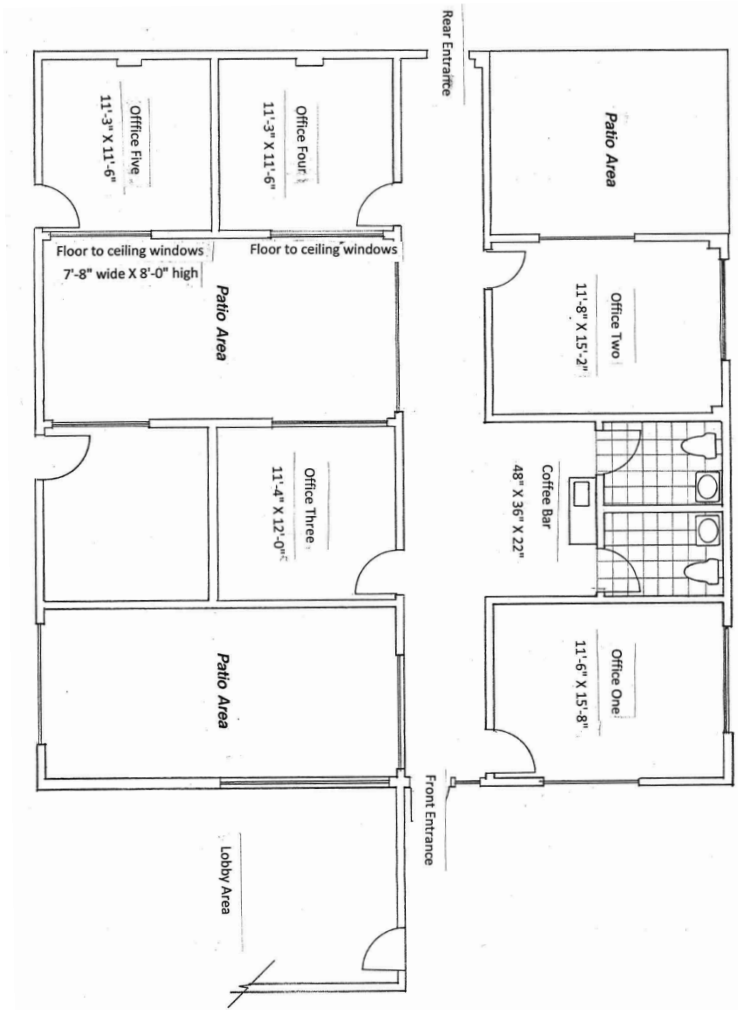


HAWKEYE PARK DISTINCTIVE LUXURY OFFICE SPACES FOR LEASE

69844/69846/69848 Highway 111, Rancho Mirage, CA 92270

69848 (Building 5)

Suite 5 - 3,025 SF



All measurements are in feet and approximate.

DISCLAIMER:

The information above has been obtained from sources believed reliable. While we do not doubt its accuracy, we have not verified it and make no guarantee, warranty or representation about it. It is your responsibility to independently confirm its accuracy and completeness. Any projections, opinions, assumptions or estimates used are for example only, and do not represent the current or future performance of the property.

HAWKEYE PARK DISTINCTIVE LUXURY OFFICE SPACES FOR LEASE

69844/69846/69848 Highway 111, Rancho Mirage, CA 92270



DISCLAIMER:

The information above has been obtained from sources believed reliable. While we do not doubt its accuracy, we have not verified it and make no guarantee, warranty or representation about it. It is your responsibility to independently confirm its accuracy and completeness. Any projections, opinions, assumptions or estimates used are for example only, and do not represent the current or future performance of the property.