

FORMER OFFICE DEPOT

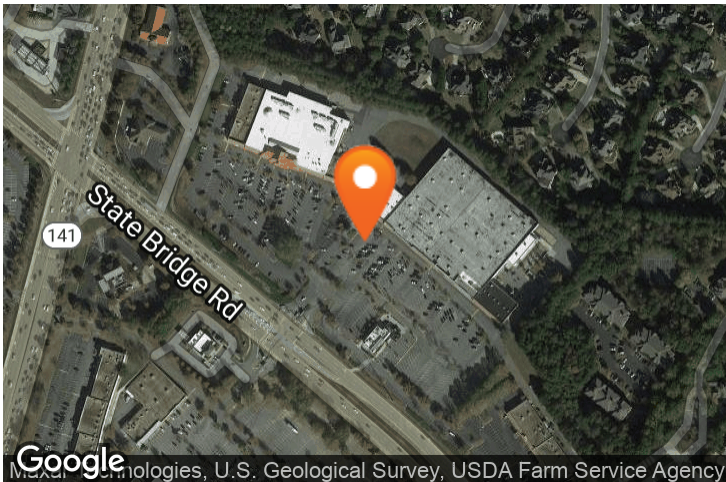
5805 State Bridge Road, John's Creek, GA 30097

EXECUTIVE SUMMARY



LOCATION OVERVIEW

Located in Medlock Corners Shopping center in the heart of John's Creek retail corridor



PROPERTY HIGHLIGHTS

- Available sublease opportunity with remaining options: 20,000 SF
- Co-tenants include: Hobby Lobby, Pet Supermarket & Dollar Tree
- Signalized full access on State Bridge Rd
- Average household income exceeds \$130,000 within a 1-mile radius
- GA DOT Traffic Counts: GA 141-52,000 AADT / State Bridge Rd-48,000 AADT

DEMOGRAPHICS

	1 MILE	3 MILES	5 MILES
Population Density	7,412	68,200	209,763
Average HH Income (\$)	130,709	128,551	130,170
Daytime Population	13,220	65,356	202,404

EXCLUSIVE AGENT(S)

AMY KENNEDY • amy.kennedy@tscg.com • 770.955.2434

