



Office Space For Lease

Opportunity

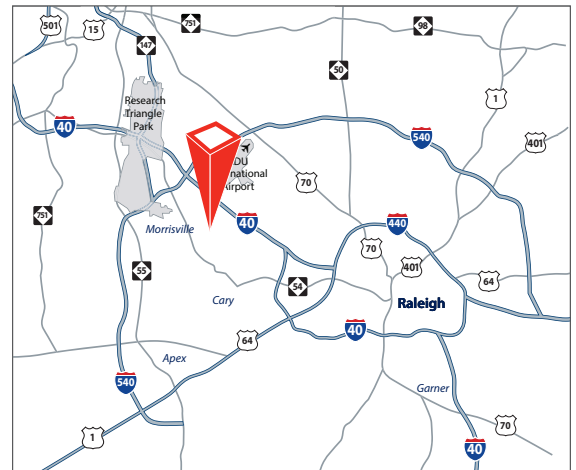
- 2,445 sf available
- Building is a single-story office/flex space
- Available immediately
- End unit with three sides of windows

Rate and Term

- \$15.00/sf or \$3,057 per month, Modified Gross
- Landlord pays TICAM & water; Tenant pays utilities and janitorial

Location

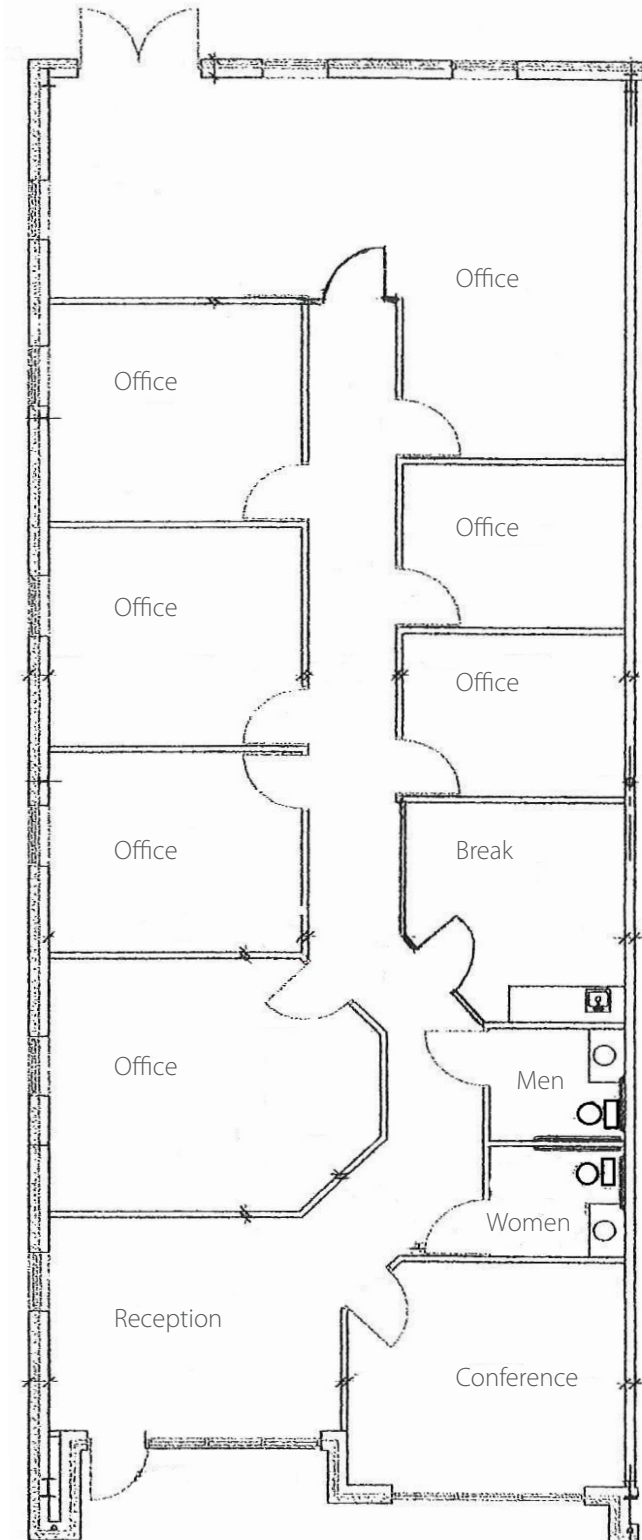
- Located in close proximity to Cary Parkway and Weston Parkway



For more information, please contact:

Michael Vulpis, Senior Vice President
D 919 420 1562
T 919 785 3434
michael.vulpis@avisonyoung.com

5440 Wade Park Boulevard
Suite 200
Raleigh, NC 27607
919 785 3434



Opportunity

- Office/flex space with large open area
- 100% heated and cooled
- Landlord maintains HVAC- Tenant changes filters
- Easy access to Research Triangle Park and Raleigh-Durham International Airport
- Building signage available
- Six privated offices
- Conference room
- Reception area
- Two bathrooms
- Breakroom
- Large open space for desk cubicles
- Move-in condition
- New LED lights through-out

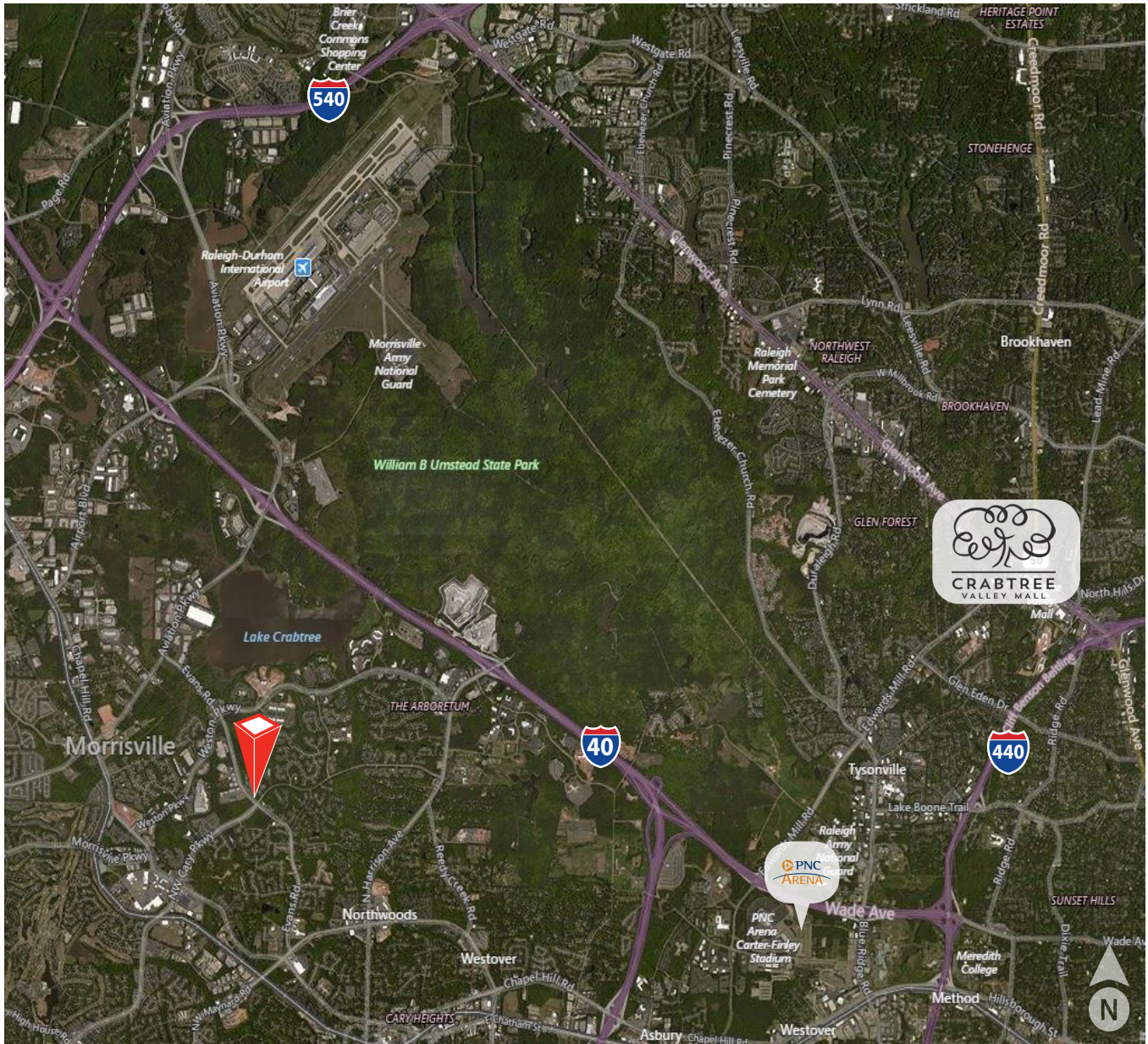


**AVISON
YOUNG**

avisonyoung.com

Michael Vulpis, Senior Vice President
D 919 420 1562
T 919 785 3434
michael.vulpis@avisonyoung.com

Location Aerial



**AVISON
YOUNG**

avisonyoung.com

Michael Vulpis, Senior Vice President
D 919 420 1562
T 919 785 3434
michael.vulpis@avisonyoung.com