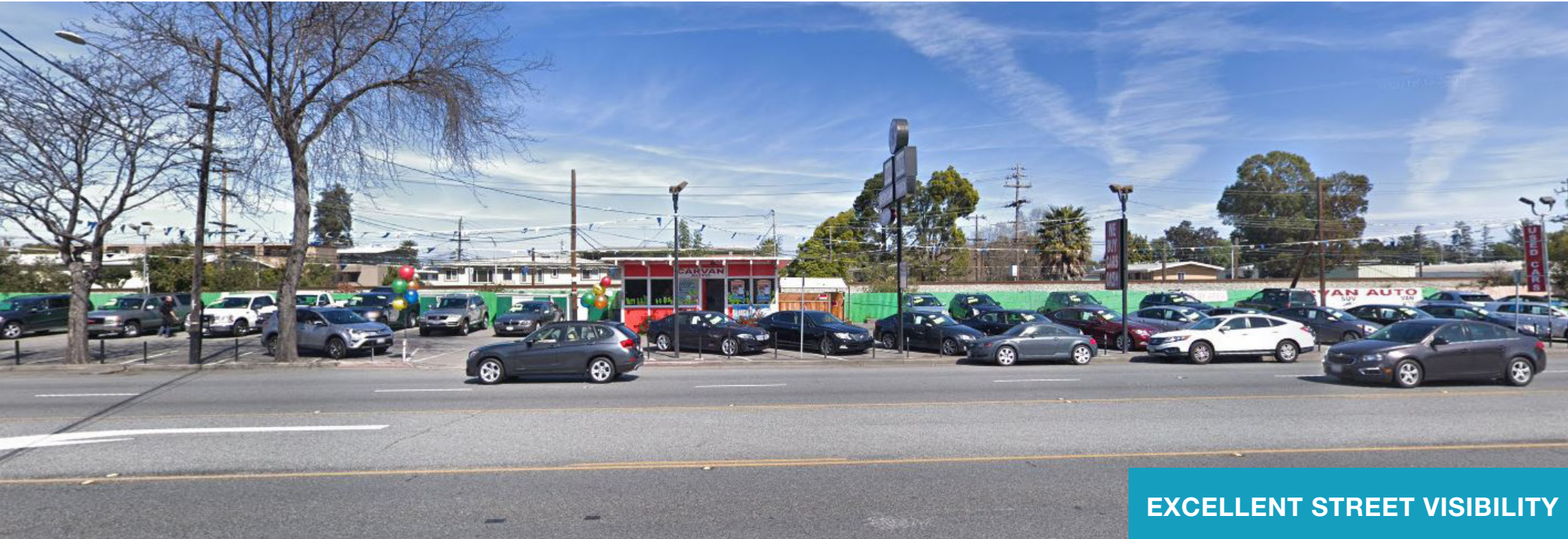


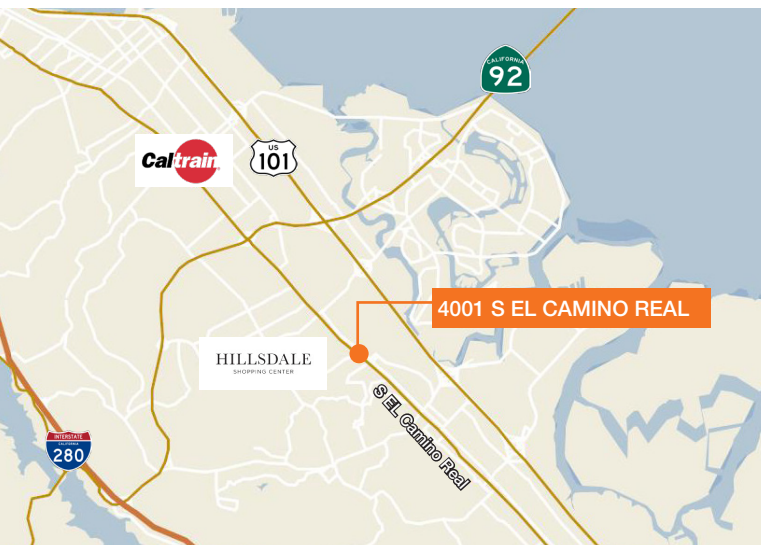
FOR LEASE

# 4001 South El Camino Real

San Mateo, CA



EXCELLENT STREET VISIBILITY



## FEATURES

±500 SF Building on 13,500 SF lot

Immediate possession

± 53 striped spots, additional 2 hour parking on street

Car wash located approximately 100 feet north of subject.  
Could help with car servicing

C3-2 zoning: automobile rental is permitted

\$13,500/month NNN plus \$1,000/month taxes

## CONTACT

**Michael Jensen**

650.769.3515

mjensen@kiddermathews.com

LIC #01966026



# FOR LEASE

# 4001 South El Camino Real

## ZONING

The following uses are permitted:

- Permitted uses in the C1 and C2 districts;
- Automobile, boat and truck sales and rental including service and repair as accessory to the primary sales use, sales may occur on open lot;
- Automobile service, parts and repairs, classified as minor motor vehicle repair in Section 27.04.325;
- Car wash and detailing facilities;
- Ambulance service;
- Other compatible uses allowed, refer to city zoning administrator;



## CONTACT

**Michael Jensen**

650.769.3515

mjensen@kiddermathews.com

LIC #01966026

