

RETAIL

For Lease

TWO AVAILABLE SPACES:

4,000 SF and 3,100 SF

- Adjacent to Security Square Mall
- located on the Mall Parking Circle
- Ample Parking
- Highly Visible Location
- Signage
- Across from Macy's and USA Discounters
- Large Employers Nearby:
 - ◇ Social Security Admin Centers For Medicare and Medicaid
 - ◇ FBI Regional Offices
 - ◇ Rutherford Business Park



Demographics (2013)	1 Mile	2 Miles	3 Miles
Population	12,848	44,579	97,821
Households (HH)	5,110	17,258	37,895
Average HH Income	66,642	70,284	69,252



FOR PRICES, DETAILS AND FLOOR PLANS
CONTACT:

MIKE SCHOFER

Mike.Schofer@rossicre.com

Main: 301.355.0070

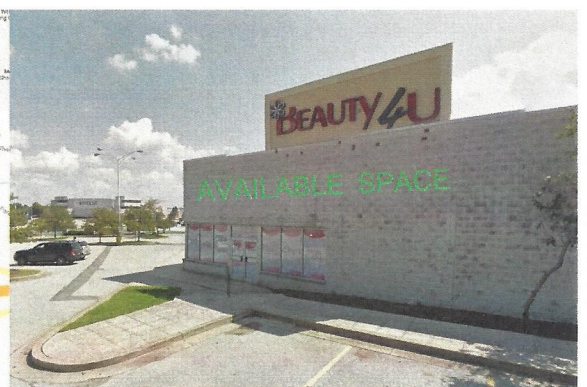
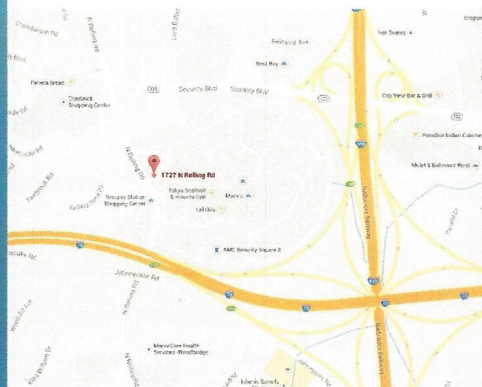
12800 Middlebrook Road, Suite 200, Germantown, MD 20874

www.rossicre.com

RETAIL For Lease



Available Space 4,000 Square Feet



FOR PRICES, DETAILS AND
FLOOR PLANS
CONTACT:

MIKE SCHOFER

Mike.Schofer@rossicre.com

Main: 301.355.0070

12800 Middlebrook Road, Suite 200, Germantown, MD 20874

www.rossicre.com