



Parklane Executive Center

31620 23RD AVENUE SOUTH | FEDERAL WAY, WA

FOR LEASE



Located in Federal Way City Center

CLOSE to I-5

ADJACENT to Transit Center

AVAILABLE 683 SF to 12,159 SF

RATE \$22.00 PSF, full service

WALKING DISTANCE to restaurants and shopping

WILL FRAME
253.722.1412
will.frame@kidder.com

DREW FRAME
253.722.1433
drew.frame@kidder.com

FOR LEASE

Parklane Executive Center

31620 23RD AVENUE SOUTH | FEDERAL WAY, WA

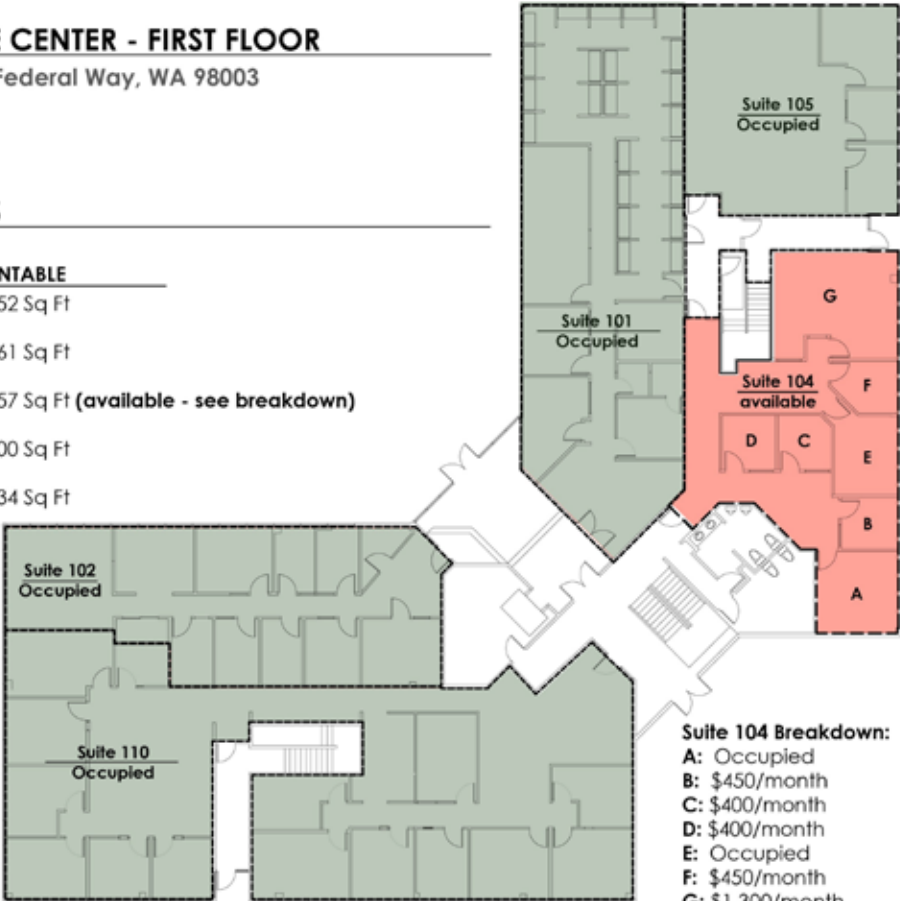
First Floor

PARKLANE EXECUTIVE CENTER - FIRST FLOOR

31620 23rd Avenue South, Federal Way, WA 98003

AREA CALCULATIONS

	USABLE	RENTABLE
Suite 101	2,308 Sq Ft	2,652 Sq Ft
Suite 102	1,706 Sq Ft	1,961 Sq Ft
Suite 104	1,615 Sq Ft	1,857 Sq Ft (available - see breakdown)
Suite 105	1,217 Sq Ft	1,400 Sq Ft
Suite 110	3,682 Sq Ft	4,234 Sq Ft



FOR LEASE

Parklane Executive Center

31620 23RD AVENUE SOUTH | FEDERAL WAY, WA

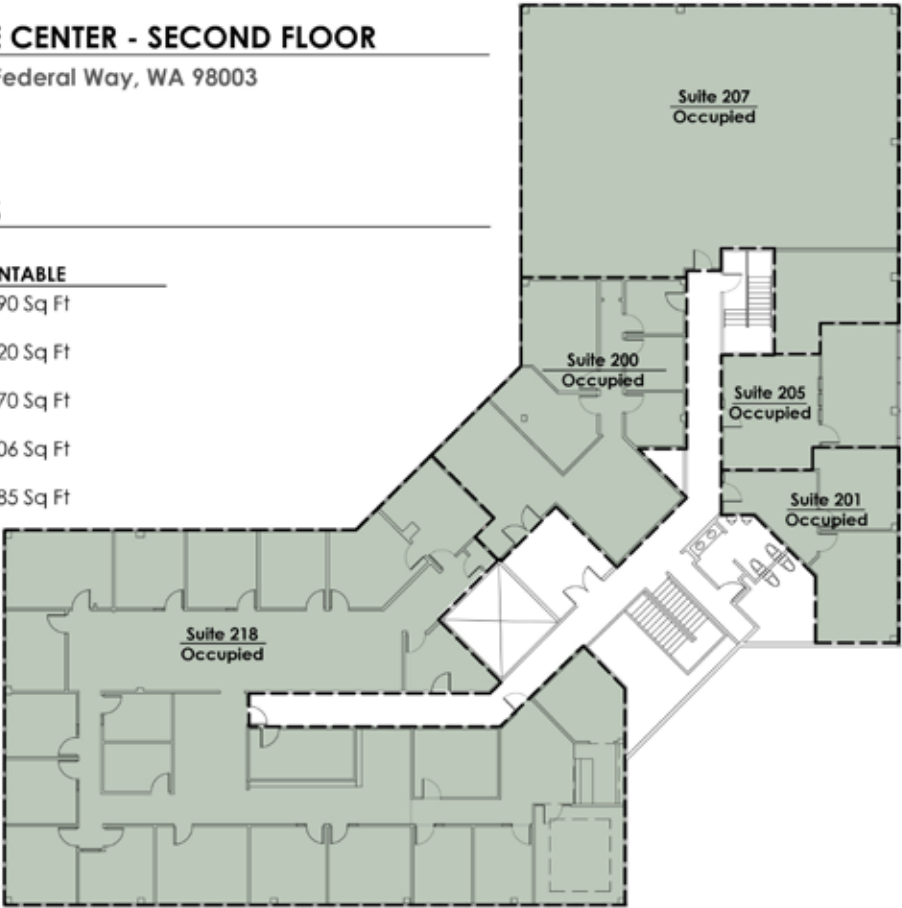
Second Floor

PARKLANE EXECUTIVE CENTER - SECOND FLOOR

31620 23rd Avenue South, Federal Way, WA 98003

AREA CALCULATIONS

	USABLE	RENTABLE
Suite 200	1,370 Sq Ft	1,590 Sq Ft
Suite 201	620 Sq Ft	720 Sq Ft
Suite 205	577 Sq Ft	670 Sq Ft
Suite 207	2,936 Sq Ft	3,406 Sq Ft
Suite 218	5,617 Sq Ft	6,585 Sq Ft



FOR LEASE

Parklane Executive Center

31620 23RD AVENUE SOUTH | FEDERAL WAY, WA

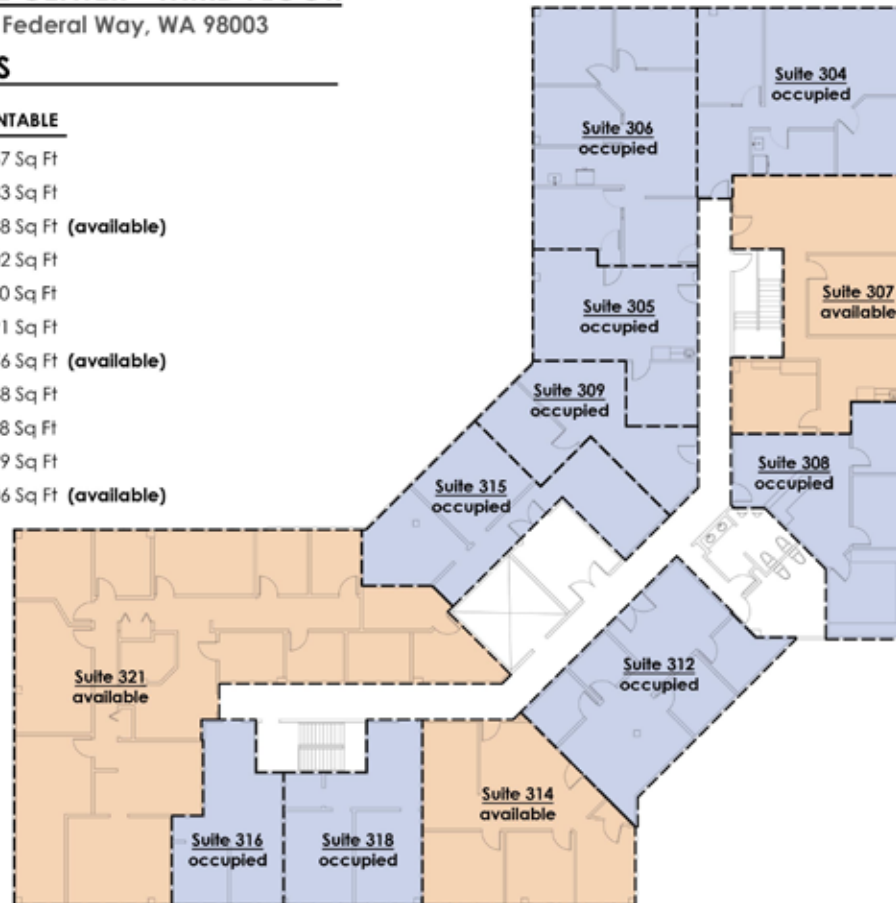
Third Floor

PARKLANE EXECUTIVE CENTER - THIRD FLOOR

31620 23rd Avenue South, Federal Way, WA 98003

AREA CALCULATIONS

	USABLE	RENTABLE
Suite 304	1,006 Sq Ft	1,167 Sq Ft
Suite 305	589 Sq Ft	683 Sq Ft
Suite 307	1,067 Sq Ft	1,238 Sq Ft (available)
Suite 308	778 Sq Ft	902 Sq Ft
Suite 309	483 Sq Ft	560 Sq Ft
Suite 312	854 Sq Ft	991 Sq Ft
Suite 314	928 Sq Ft	1,076 Sq Ft (available)
Suite 315	731 Sq Ft	848 Sq Ft
Suite 316	447 Sq Ft	518 Sq Ft
Suite 318	585 Sq Ft	679 Sq Ft
Suite 321	2,850 Sq Ft	3,306 Sq Ft (available)



KIDDER.COM

This information supplied herein is from sources we deem reliable. It is provided without any representation, warranty, or guarantee, expressed or implied as to its accuracy. Prospective Buyer or Tenant should conduct an independent investigation and verification of all matters deemed to be material, including, but not limited to, statements of income and expenses. Consult your attorney, accountant, or other professional advisor.

km Kidder Mathews