

# ECHO PARK MODERN/CREATIVE OFFICE SPACE FOR LEASE

2219 AARON STREET (CORNER OF AARON  
AND GLENDALE)  
ECHO PARK, CA 90026



COMMERCIAL  
ASSET GROUP

## AVAILABLE SPACE

1ST FLOOR: ±1,800 SF

AVAILABLE  
IMMEDIATELY

## RENTAL RATE

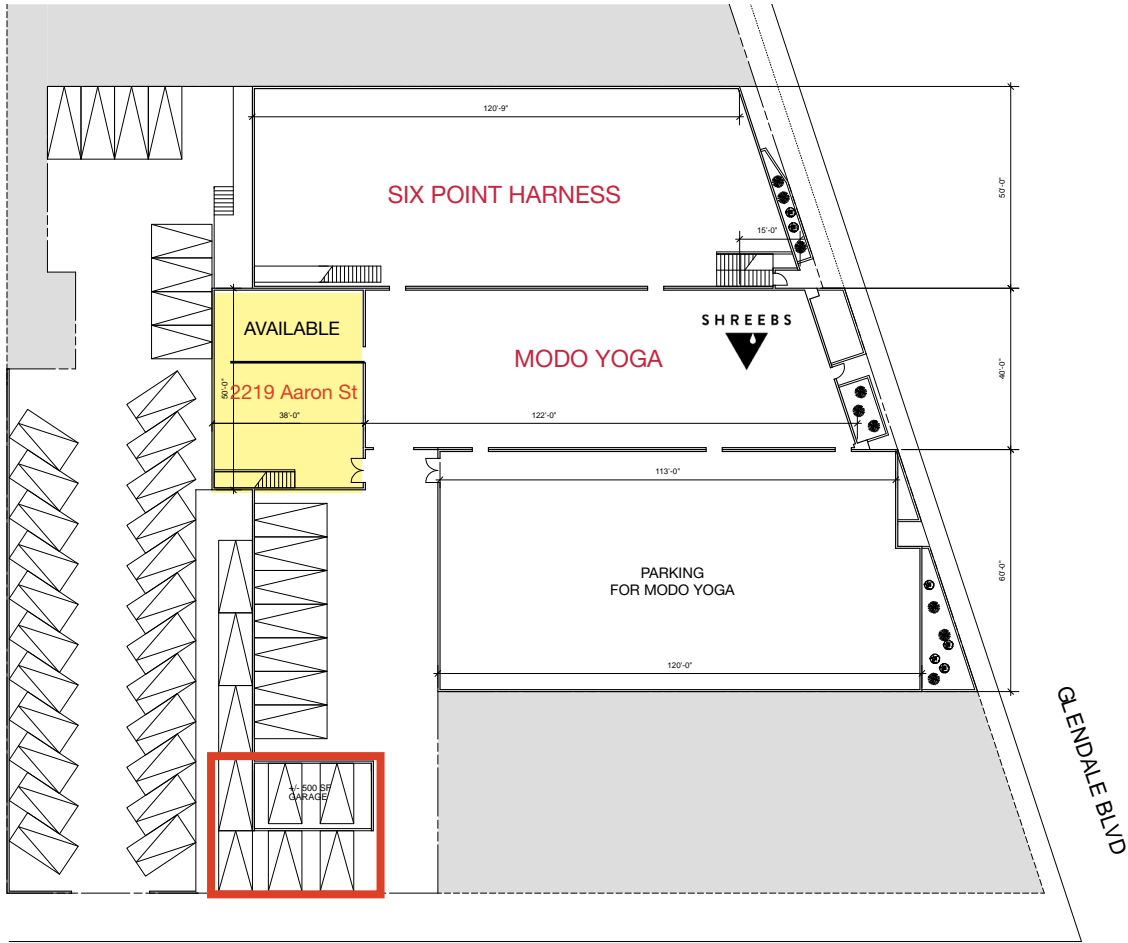
\$3.25 PSF, MG

## PARKING

2 SPACES PER UNIT

These materials are based on information and content provided by others, which we believe are accurate. No guarantee, warranty or representation is made by Commercial Asset Group, Inc. or its personnel. All interested parties must independently verify accuracy and completeness. As well, any projections, assumptions, opinion, or estimates are used for example only and do not represent the current or future performance of the identified property. Your tax, financial, legal and toxic substance advisors should conduct a careful investigation of the property and its suitability for your needs, including land use limitations. The property is subject to prior lease, sale, change in price, or withdrawal from the market without notice.

- **NEW CONSTRUCTION**
- HIGH END CREATIVE OFFICE: LANDLORD HAS **SPARED NO EXPENSE** AND HAS BUILT OUT THE SPACES PAYING ATTENTION TO EVERY DETAIL
- **POLISHED CONCRETE FLOORS, HIGH CEILINGS**, DESIGNER KITCHENS WITH BUILT IN FRIDGES, STOVES, AND DISHWASHERS, **BALCONIES**, AND TONS OF GLASS
- LANDLORD CAN CUSTOMIZE SPACE TO TENANT'S SPECIFIC NEEDS
- LARGE WINDOWS WITH AMAZING NATURAL LIGHT
- **UNBELIEVABLE VIEWS** OF THE DOWNTOWN SKYLINE
- SITUATED ON ONE OF THE **HIPPEST STRETCHES OF ECHO PARK** WITH GREAT FREEWAY ACCESS
- CO-TENANTS IN THE BUILDING INCLUDE SIX POINTS HARNESS ANIMATION STUDIO, SHREEBS COFFEE, AND **MODO YOGA**



Suite	SF
1st Floor	+/-1,800

**1ST FLOOR  
VIDEO TOUR**

PARKING AREA

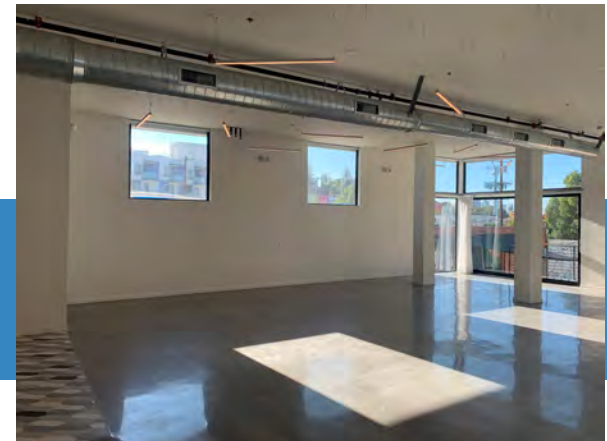
AARON ST

SENNETT CREATIVE CAMPUS

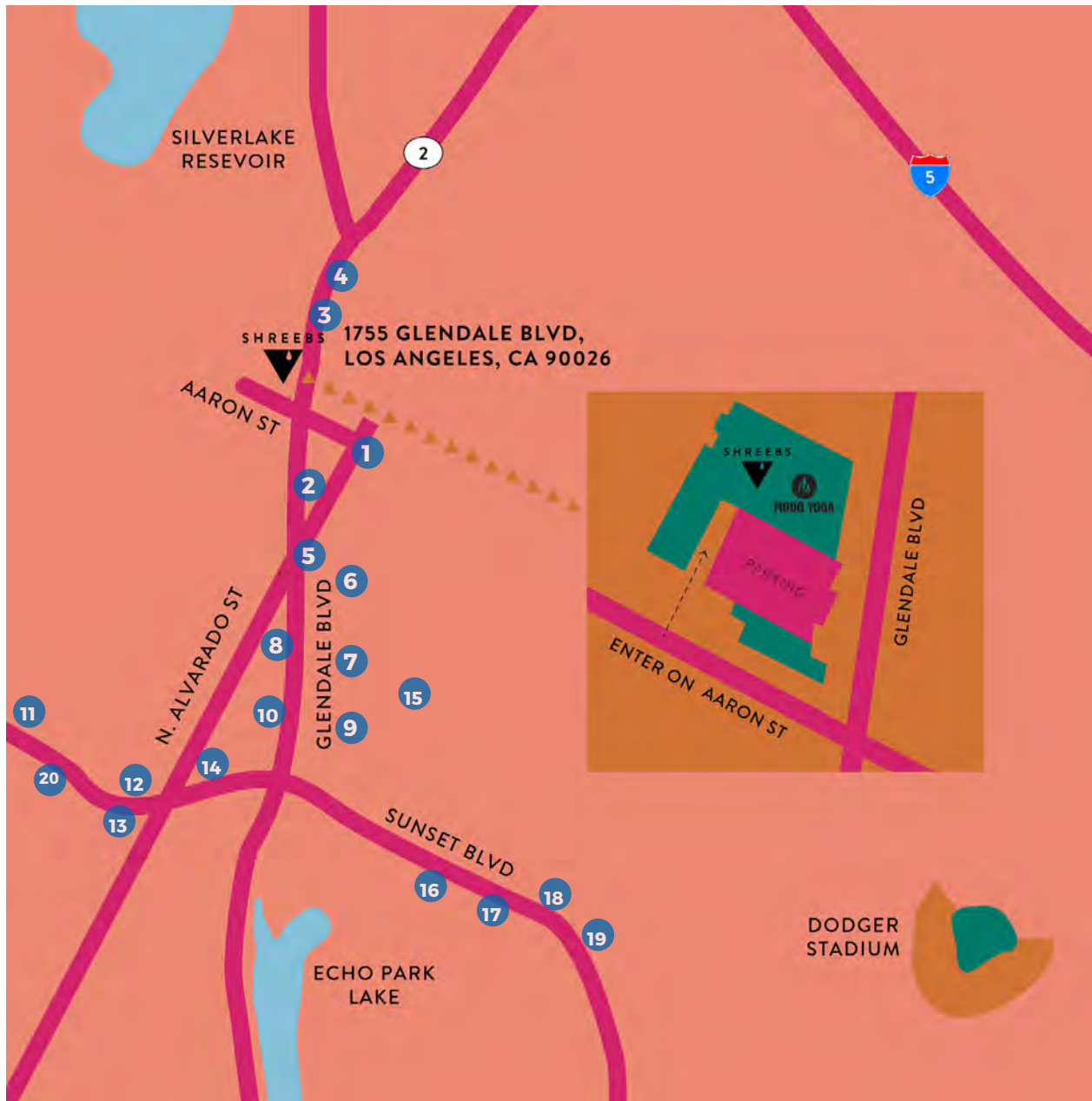
NOT TO SCALE



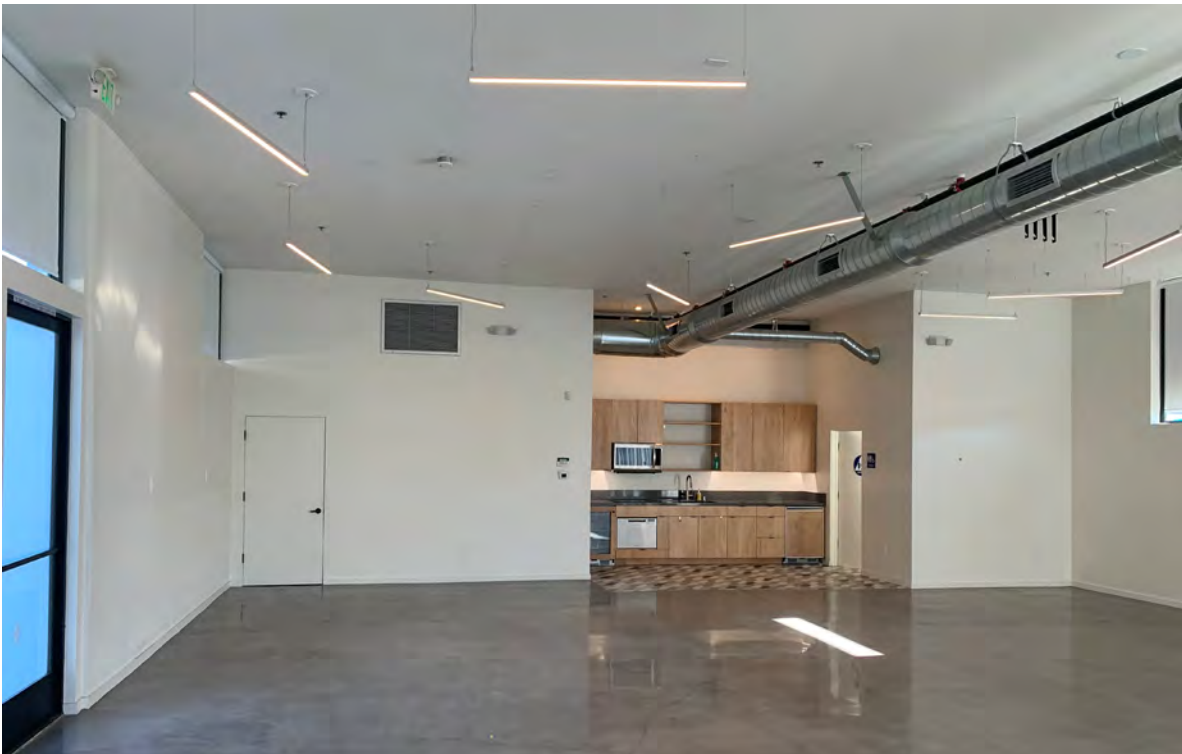
# SITE PLAN



# MAP



1. Mugshot Coffee Roasters
2. Jack in the Box
3. H&H Market
4. Spain Restaurant
5. Maya's Tacos
6. Tacos Mexico Echo Park
7. Slasher Pizza
8. McDonald's
9. The Semi Tropic
10. Vons
11. Elio's Wood Fire Pizza
12. Mohawk Bend
13. Larchmont Bungalow Cafe
14. Silverlake Flea
15. Tilda
16. Honey Hi
17. Bar Flores
18. Monty's Good Burger
19. El Compadre
20. Silverlake Ramen



FIRST FLOOR  
PHOTOS



COMMERCIAL  
ASSET GROUP



**DAVID ASCHKENASY**  
EXECUTIVE VICE PRESIDENT  
P 310.272.7381  
E DAVIDA@CAG-RE.COM  
LIC. 01714442

**SEAN STOCKBAUER**  
ASSOCIATE  
P 310.272.7389  
E SEAN@CAG-RE.COM  
LIC. 02080476

**COMMERCIAL ASSET GROUP**  
1801 CENTURY PARK EAST, STE 1550  
LOS ANGELES, CA 90067  
P 310.275.8222 F 310.275.8223  
WWW.CAG-RE.COM LIC. 01876070