



Recently Reduced

### Property Features

- 37,059 of covered SF on 7.95 AC
- 10,000 +/- of 33,600 SF of buildings is heated and cooled
- Nice office space
- Multiple buildings
- Property completely fenced
- Between Roanoke and Lynchburg on 460 E
- Zoned business
- **\$725,000 or best offer**



For more information, contact:

**BOYD JOHNSON**  
Vice President  
540 767 3002  
[boyd.johnson@thalhimer.com](mailto:boyd.johnson@thalhimer.com)

**WYATT POATS**  
Associate  
540 767 3008  
[wyatt.poats@thalhimer.com](mailto:wyatt.poats@thalhimer.com)

Wells Fargo Tower  
10 S. Jefferson Street, Suite 1750  
Roanoke, VA 24011  
[www.thalhimer.com](http://www.thalhimer.com)



EXTERIOR



EXTERIOR



EXTERIOR



EXTERIOR



INTERIOR



INTERIOR

For more information, contact:

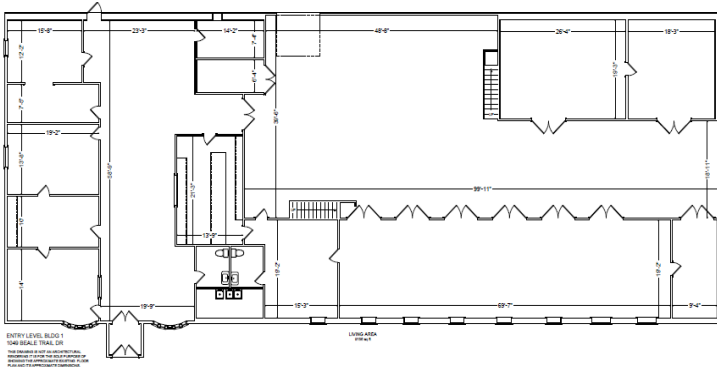
**BOYD JOHNSON**  
Vice President  
540 767 3002  
[boyd.johnson@thalhimer.com](mailto:boyd.johnson@thalhimer.com)

**WYATT POATS**  
Associate  
540 767 3008  
[wyatt.poats@thalhimer.com](mailto:w Wyatt.poats@thalhimer.com)

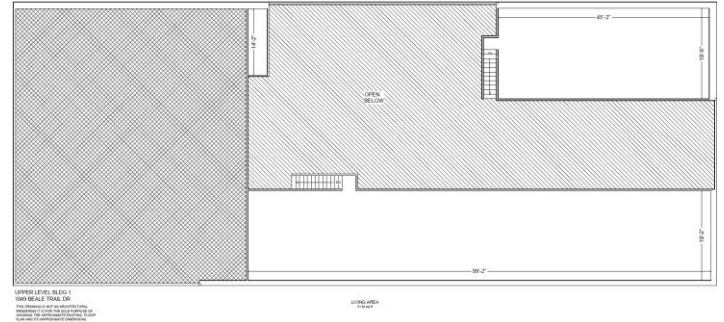
Wells Fargo Tower  
10 S. Jefferson Street, Suite 1750  
Roanoke, VA 24011  
[www.thalhimer.com](http://www.thalhimer.com)

Independently Owned and Operated / A Member of the Cushman & Wakefield Alliance

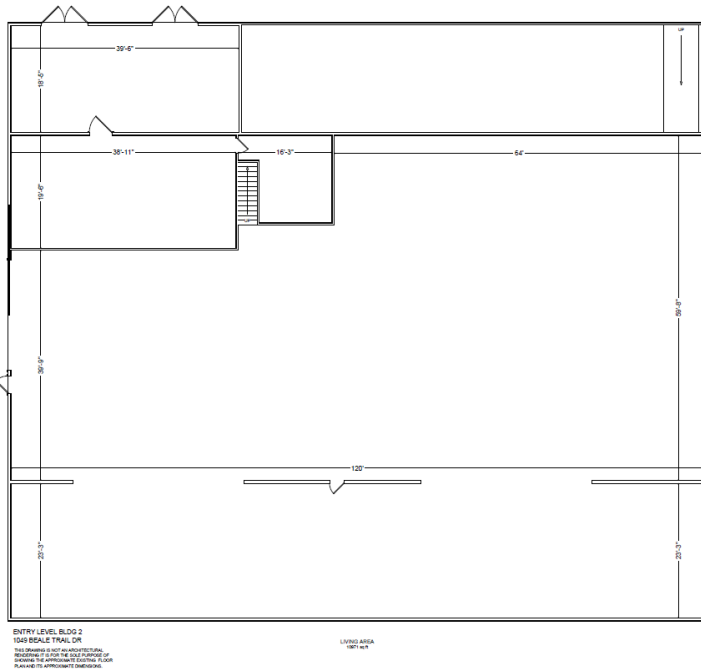
Cushman & Wakefield | Thalhimer © 2015. No warranty or representation, express or implied, is made to the accuracy or completeness of the information contained herein, and same is submitted subject to errors, omissions, change of price, rental or other conditions, withdrawal without notice, and to any special listing conditions imposed by the property owner(s). As applicable, we make no representation as to the condition of the property (or properties) in question.



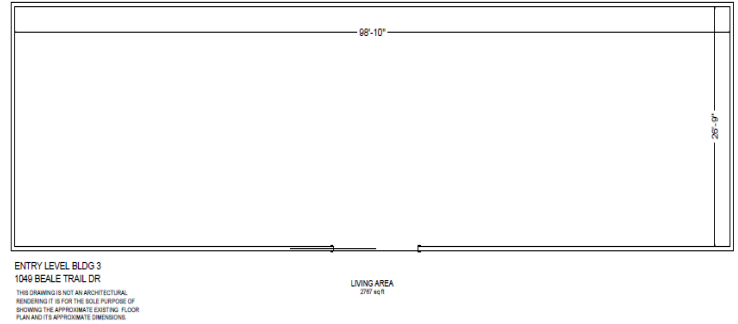
First Floor – Building 1 – 9,156 SF



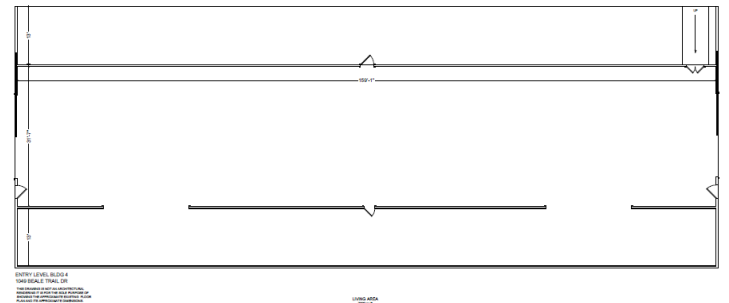
Second Floor – Building 1 – 3,134 SF



Entry Level – Building 2 – 14,612 SF



Entry Level – Building 3



Entry Level – Building 4 – 7,390 SF

For more information, contact:

**BOYD JOHNSON**  
 Vice President  
 540 767 3002  
 boyd.johnson@thalhimer.com

**WYATT POATS**  
 Associate  
 540 767 3008  
 wyatt.poats@thalhimer.com

Wells Fargo Tower  
 10 S. Jefferson Street, Suite 1750  
 Roanoke, VA 24011  
 www.thalhimer.com