



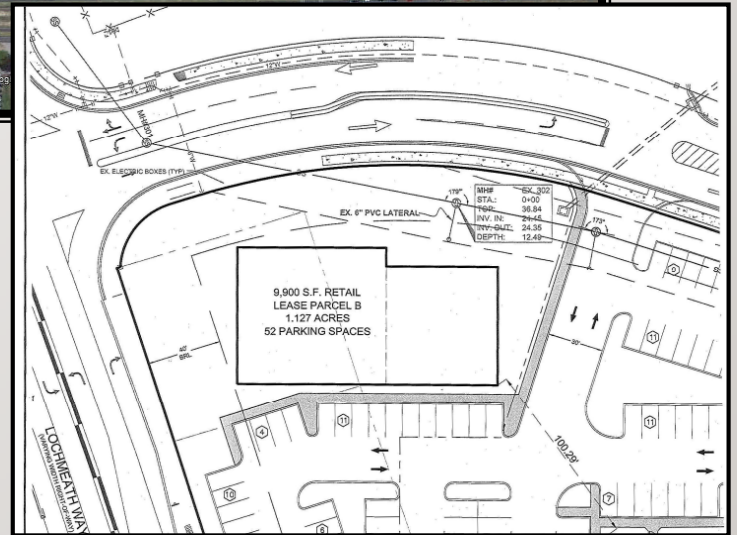
# CAMDEN CROSSING

Proposed Retail Space for Lease

Route 13 and Lochmeath Way



- Join Cheddar's Restaurant in Camden Crossing
- Total GLA: 9,900+/- SF
- Available space: 1,500+/- SF
- Lease Price: \$22.00 psf NNN
- Zoning: BG
- Curve cut off of Walmart Drive
- Location: Corner of Route 13 and Lochmeath Way.



Just in front of Camden Lowe's

- Traffic Count: 40,112 AADT 2001
  - Demographics:
- |                           | 3 Mile | 5 Miles | 10 Miles |
|---------------------------|--------|---------|----------|
| Projected Population 2013 | 36,747 | 83,634  | 126,766  |
| Projected Med Income 2013 | 65,005 | 62,986  | 62,394   |

**Charlie Rodriguez**

302-674-3400

ccrod1@aol.com

46 S State Street

Dover, DE 19901

302-674-3400 Office

302-674-8479 Fax

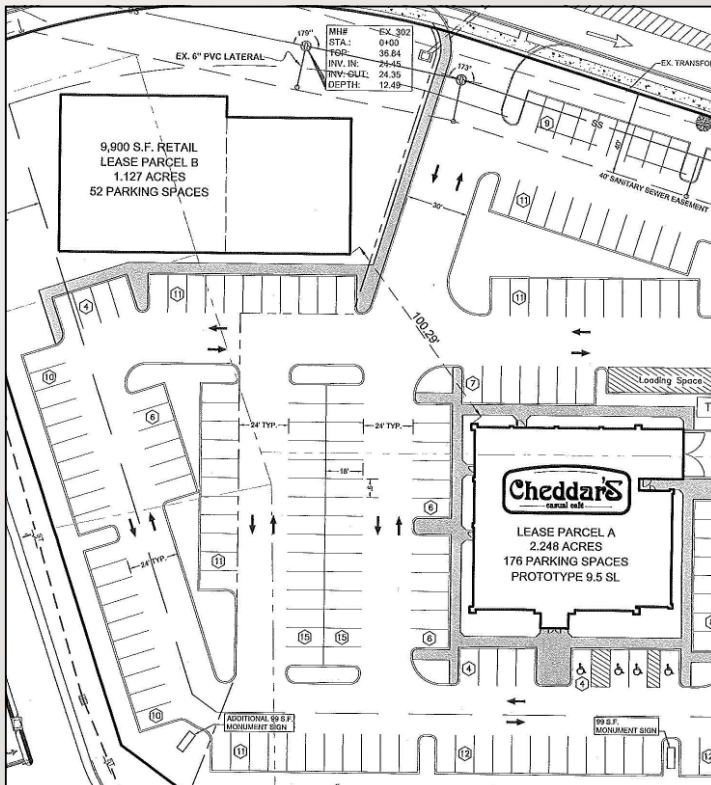
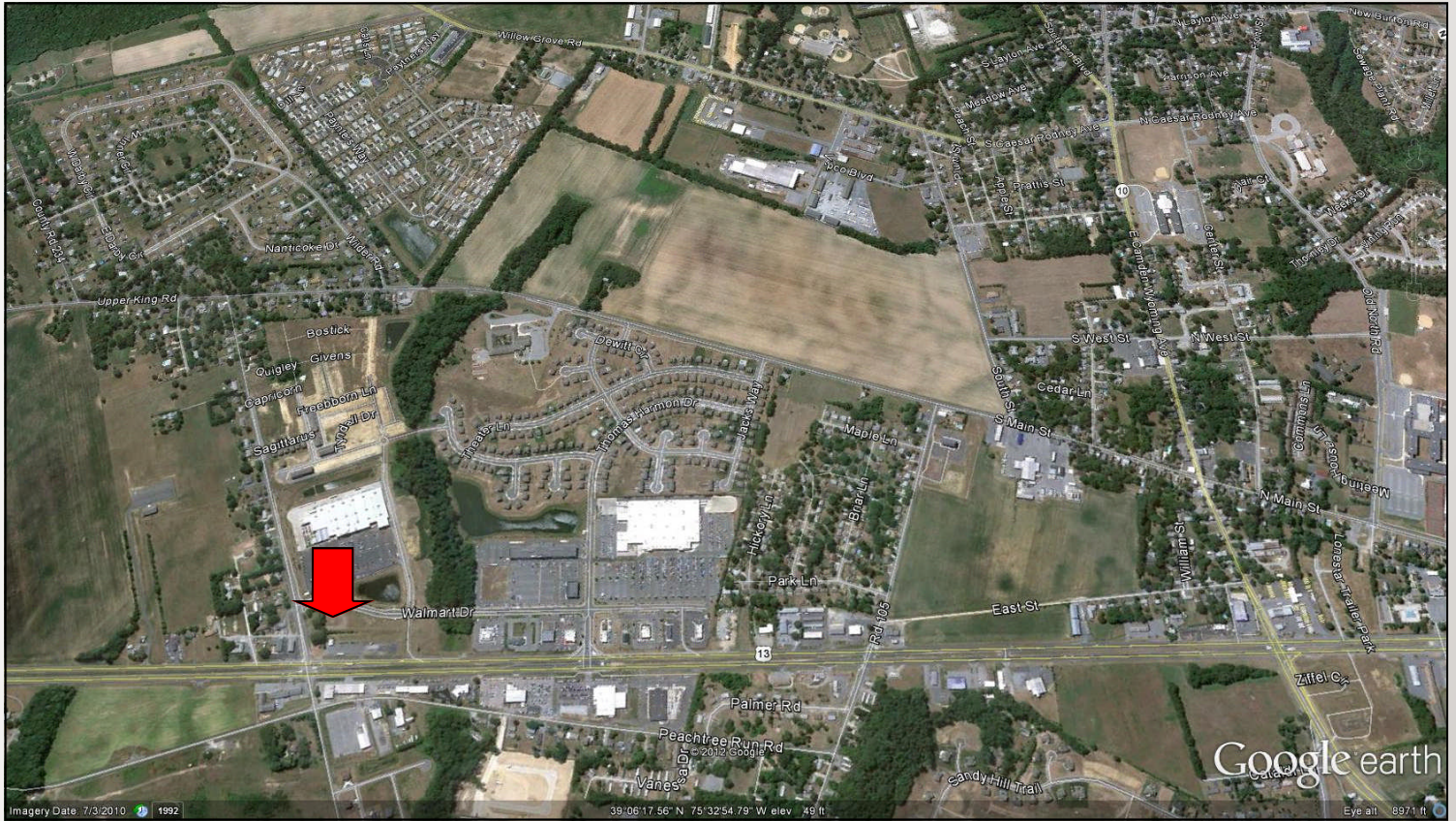
[www.randrcommercialrealty.com](http://www.randrcommercialrealty.com)





# PROPOSED RETAIL SPACE FOR LEASE

Route 13  
Camden, DE



**Charlie Rodriguez**

302-674-3400  
ccrod1@aol.com

46 S State Street  
Dover, DE 19901

302-674-3400 Office  
302-674-8479 Fax

[www.randrcommercialrealty.com](http://www.randrcommercialrealty.com)

All information contained herein is believed to be accurate, however was obtained from third parties and R & R Commercial Realty, Inc. does not warrant as to the accuracy submitted subject to changes or modification without notice. Listing Broker represents the seller's interest.