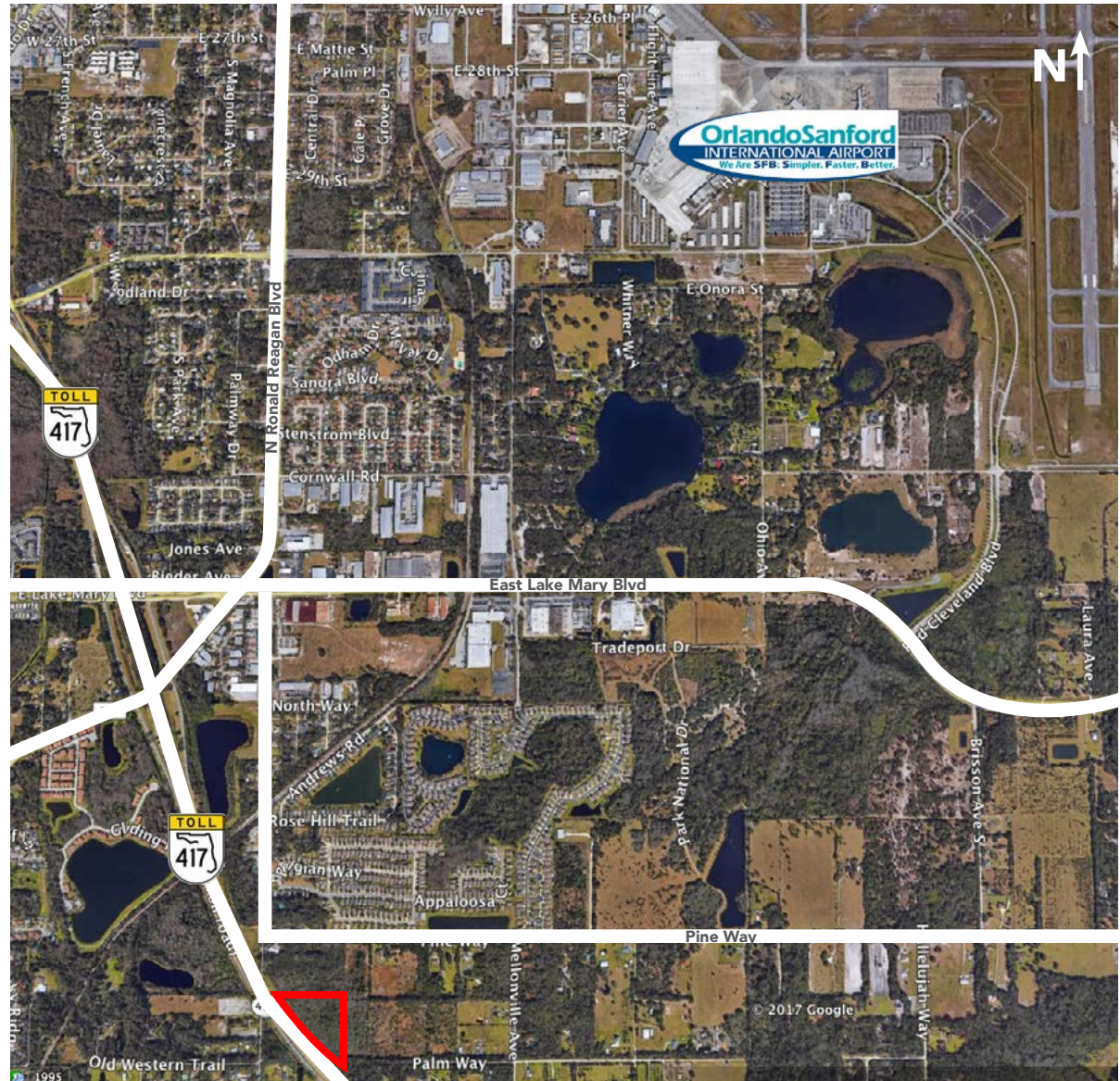


VACANT RESIDENTIAL LAND FOR SALE

- **Negotiable Price**
- **5.49 AC**
- Owner is willing to demise parcels
- Current density of 1 unit per acre
- Zoned AG1
- Minutes from 417 and Lake Mary Blvd
- Less than 2 miles from Orlando Sanford International Airport



DEMOGRAPHICS:

POPULATION

| | |
|---------|---------------|
| 1 mile | 2,501 |
| 3 miles | 28,114 |
| 5 miles | 92,178 |

TRAFFIC COUNTS

+/- **2,000** vehicles/day
at the site
+/- **40,000** on Hwy 417

DAYTIME BUSINESS POPULATION

| | |
|---------|---------------|
| 1 mile | 1,061 |
| 3 miles | 11,250 |
| 5 miles | 31,597 |

AVERAGE HH INCOME

| | |
|---------|-----------------|
| 1 mile | \$63,598 |
| 3 miles | \$56,493 |
| 5 miles | \$67,809 |