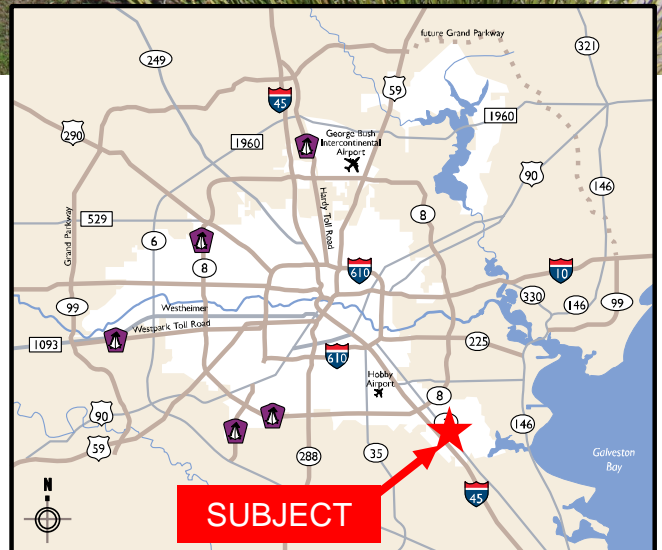


**FOR LEASE**



- 8,000 sq. ft. building with 1,838 SF of office located on ± 26,110 sq. ft. of land
- Fully insulated metal building with masonry front
- 100% climate controlled
- One (1) 14' x 16 door at dock well
- One (1) 16' x 18' grade level door
- Metal halide lighting
- 19' – 22' clear height
- City of Houston utilities
- 8 parking spots, 1 handicap
- Asking Rate: \$0.94/sf/mo. NNN

For more information, contact:

**Coe Parker, SIOR**

(713) 963 2825

[Coe.Parker@cushwake.com](mailto:Coe.Parker@cushwake.com)

**B. Kelley Parker III, SIOR**

(713) 963 2896

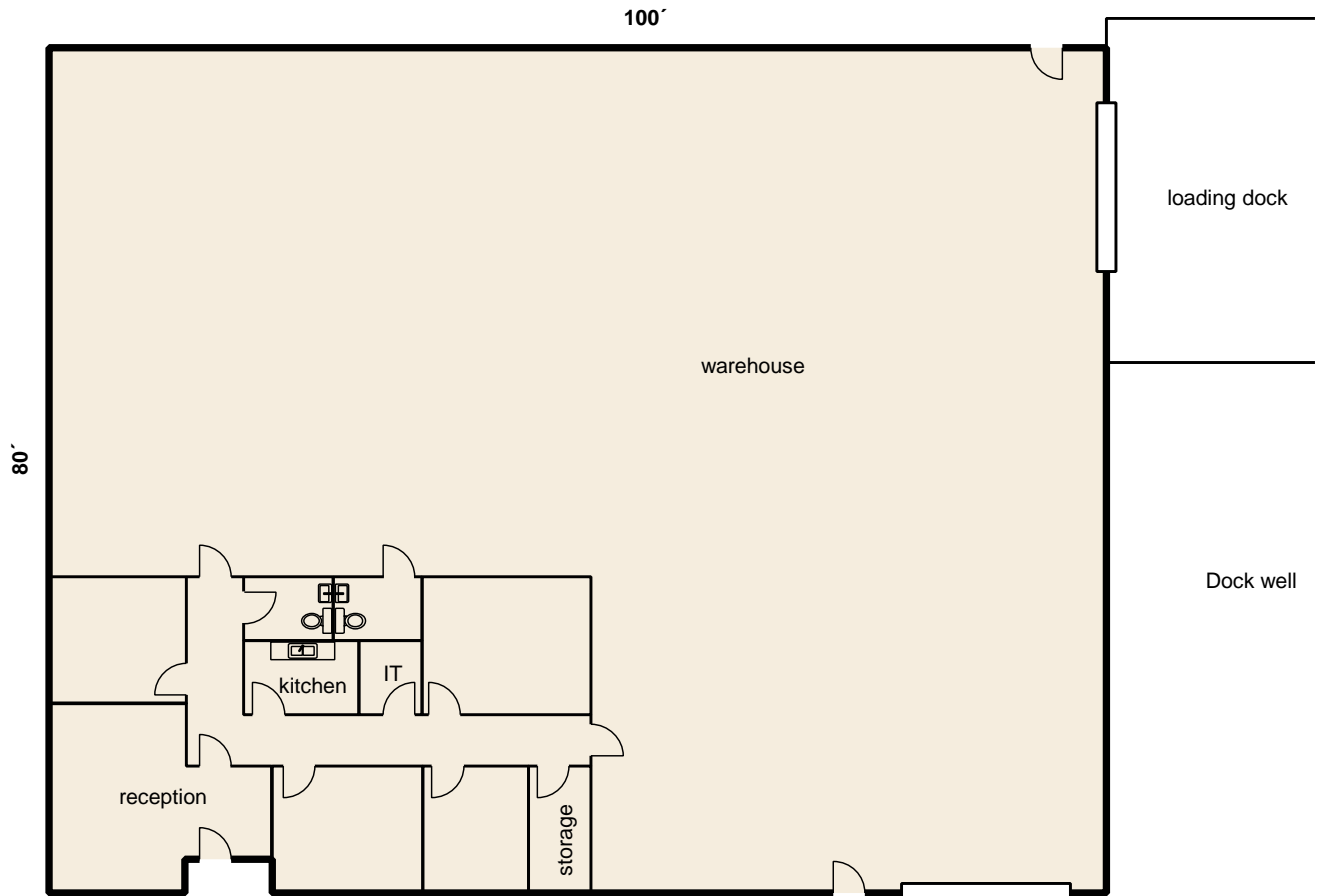
[Kelley.Parker@cushwake.com](mailto:Kelley.Parker@cushwake.com)

**John F. Littman, SIOR**

(713) 963 2862

[John.Littman@cushwake.com](mailto:John.Littman@cushwake.com)

**Cushman & Wakefield**  
Licensed Real Estate Brokers  
1330 Post Oak Boulevard | Suite 2700  
Houston, TX 77056  
[www.cushmanwakefield.com](http://www.cushmanwakefield.com)



For more information, contact:

**Coe Parker, SIOR**

(713) 963 2825

[Coe.Parker@cushwake.com](mailto:Coe.Parker@cushwake.com)

**B. Kelley Parker III, SIOR**

(713) 963 2896

[Kelley.Parker@cushwake.com](mailto:Kelley.Parker@cushwake.com)

**John F. Littman, SIOR**

(713) 963 2862

[John.Littman@cushwake.com](mailto:John.Littman@cushwake.com)

**Cushman & Wakefield**

Licensed Real Estate Brokers

1330 Post Oak Boulevard | Suite 2700

Houston, TX 77056

[www.cushmanwakefield.com](http://www.cushmanwakefield.com)