

LOCATION



1795 Sportsman Lane NW
Huntsville, AL 35816
34.745144, -86.628883



SPACE AVAILABLE
6,000 SF



PRICE
Call For Pricing

ABOUT THE PROPERTY

This building offers fully conditioned warehouse space complete with a reception area, alongside one office and two restrooms for added convenience. Provides ample vertical space for various operational needs. Situated in central Huntsville enhancing connectivity for businesses and clientele alike.

PROPERTY HIGHLIGHTS:

- Building features fully conditioned warehouse space with reception area, 1 office and 2 restrooms.
- Building has 2 rollup doors that are 12'x 12'
- Clear height is 13'4" in front and 12' in back approximately.
- Located in central Huntsville with easy access to I-565 and Memorial Parkway.



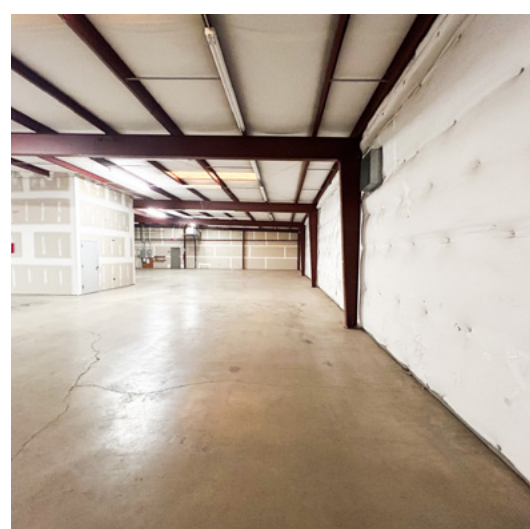
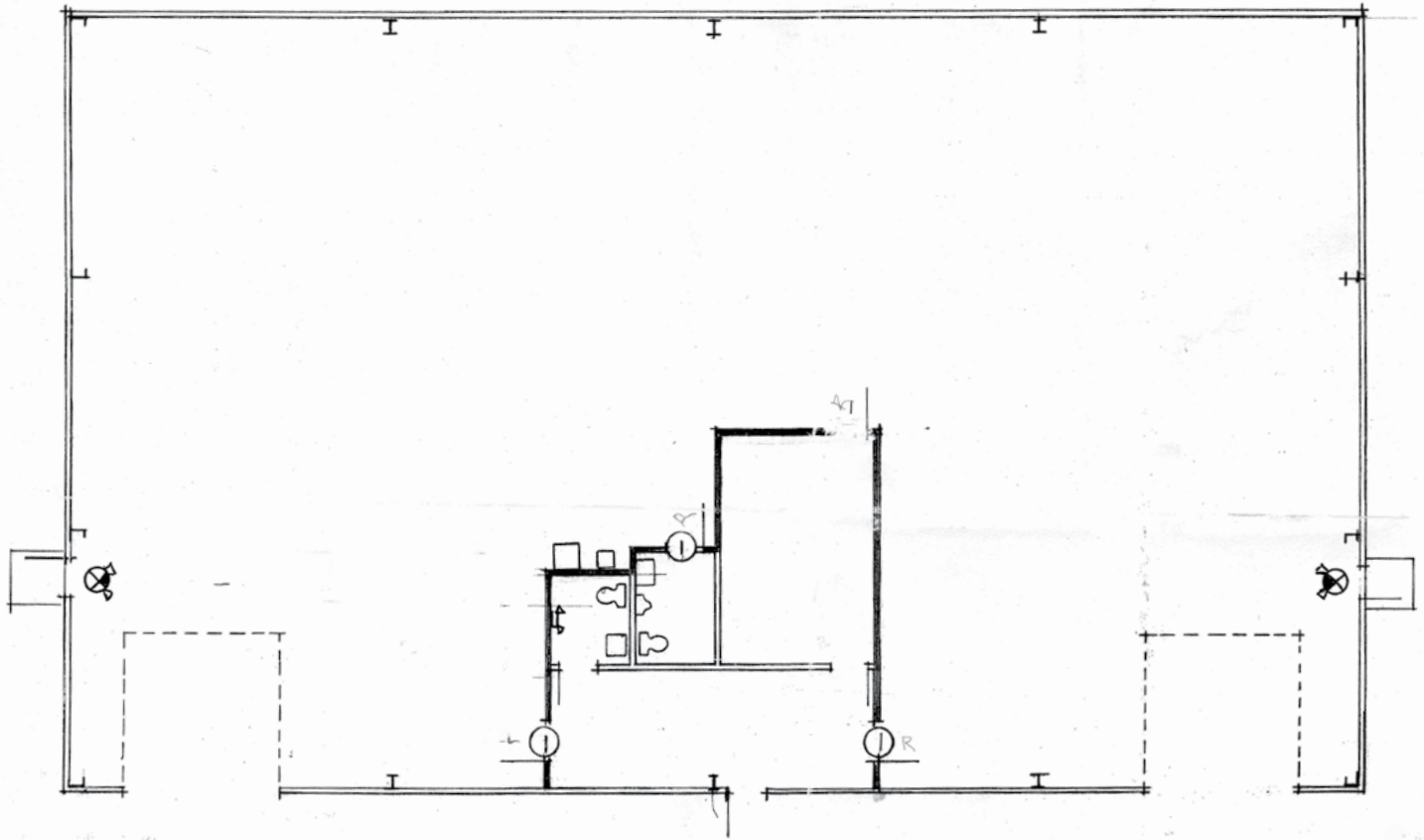
CRUNKLETON
COMMERCIAL REAL ESTATE GROUP

FOR MORE INFORMATION:

Eric St. John, CCIM

☎ 256-384-7603 ✉ eric@crunkletonassociates.com

FLOOR PLAN & PICTURES



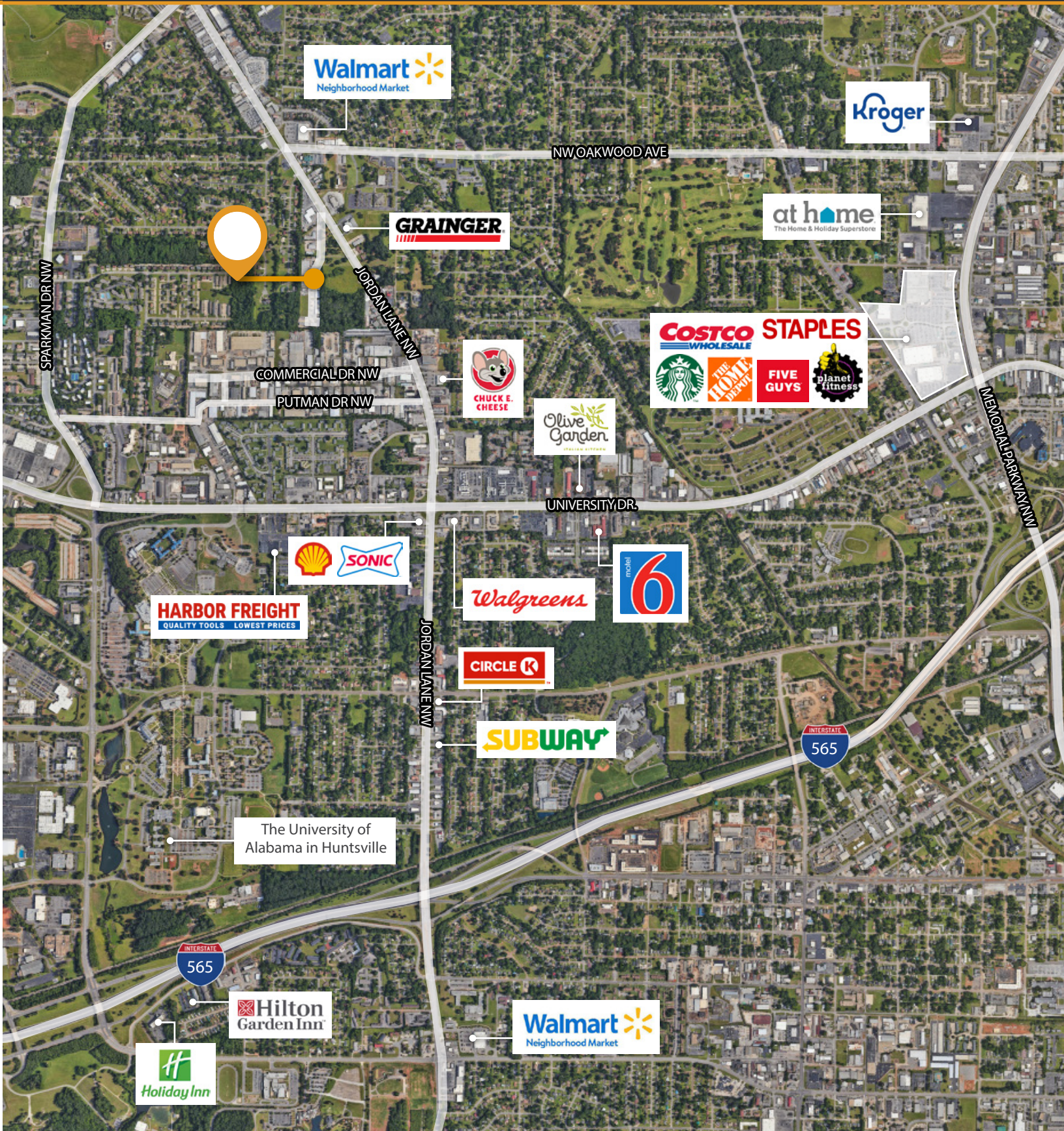
CRUNKLETON
COMMERCIAL REAL ESTATE GROUP

FOR MORE INFORMATION:

Eric St. John, CCIM

☎ 256-384-7603 ✉ eric@crunkletonassociates.com

PROPERTY MAP



CRUNKLETON
COMMERCIAL REAL ESTATE GROUP

FOR MORE INFORMATION:

Eric St. John, CCIM

📞 256-384-7603 ✉️ eric@crunkletonassociates.com