

20300 S STATE ROUTE D

BELTON, MO 64012



MAJOR PRICE REDUCTION!



HIGHLIGHTS

- Historical Jaudon Saloon
- Located at 203rd & Holmes
- Cass County Unincorporated
- 2,407 SF Bar/Restaurant
- Apartment on 2nd Floor
- 2.56 Acres
- Being Sold "As Is"

FOR SALE

\$199,000

DEMOGRAPHICS

| | 1 Mile | 3 Mile | 5 Mile |
|---------------------------|----------|----------|----------|
| 2019 MED HOUSEHOLD INCOME | \$79,102 | \$87,280 | \$83,410 |

Jim Thome

Mobile (913) 548-7800

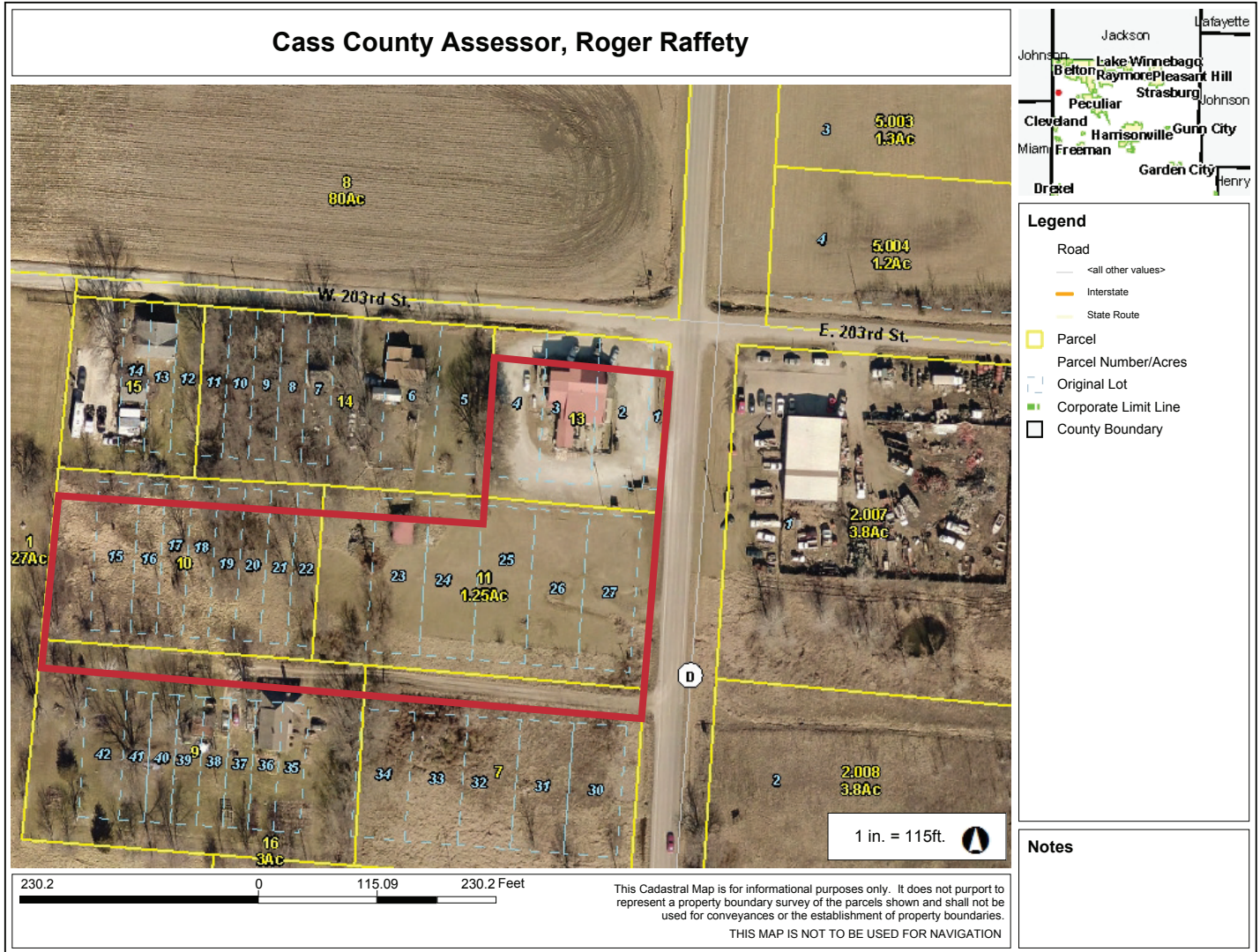
Email: jimthome@reececommercial.com

The information above has been obtained from sources believed reliable. While we do not doubt its accuracy we have not verified it and make no guarantee, warranty or representation about it. It is your responsibility to independently confirm its accuracy and completeness. Any projections, opinions, assumptions, or estimates used are for example only and do not represent the current or future performance of the property. You and your advisors should conduct a careful, independent investigation of the property to determine to your satisfaction the suitability of the property for your needs.

© 2019

ZONING MAP

20300 S STATE ROUTE D, BELTON, MO 64012



| | |
|----------------------|---------|
| BLOCK 1 - LOTS 1-4 | .57 AC |
| BLOCK 3 - LOTS 15-22 | .74 AC |
| BLOCK 4 - LOTS 23-28 | 1.25 AC |
| | <hr/> |
| | 2.56 AC |

Jim Thome

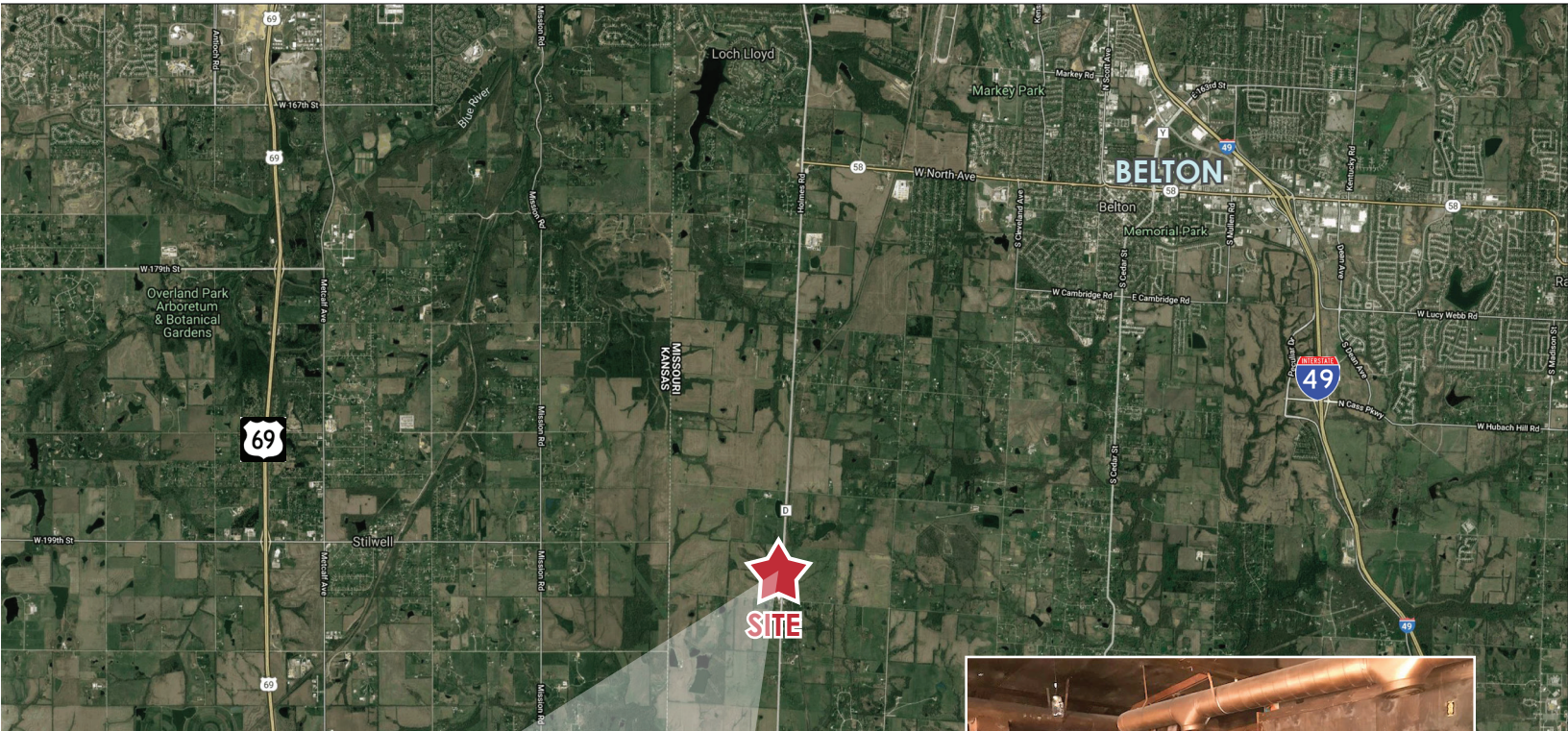
Mobile (913) 548-7800

Email: jimthome@reececommercial.com

The information above has been obtained from sources believed reliable. While we do not doubt its accuracy we have not verified it and make no guarantee, warranty or representation about it. It is your responsibility to independently confirm its accuracy and completeness. Any projections, opinions, assumptions, or estimates used are for example only and do not represent the current or future performance of the property. You and your advisors should conduct a careful, independent investigation of the property to determine to your satisfaction the suitability of the property for your needs.

AERIALS

20300 S STATE ROUTE D, BELTON, MO 64012



Jim Thome

Mobile (913) 548-7800

Email: jimthome@reececommercial.com

The information above has been obtained from sources believed reliable. While we do not doubt its accuracy we have not verified it and make no guarantee, warranty or representation about it. It is your responsibility to independently confirm its accuracy and completeness. Any projections, opinions, assumptions, or estimates used are for example only and do not represent the current or future performance of the property. You and your advisors should conduct a careful, independent investigation of the property to determine to your satisfaction the suitability of the property for your needs.

© 2019