

FOR LEASE

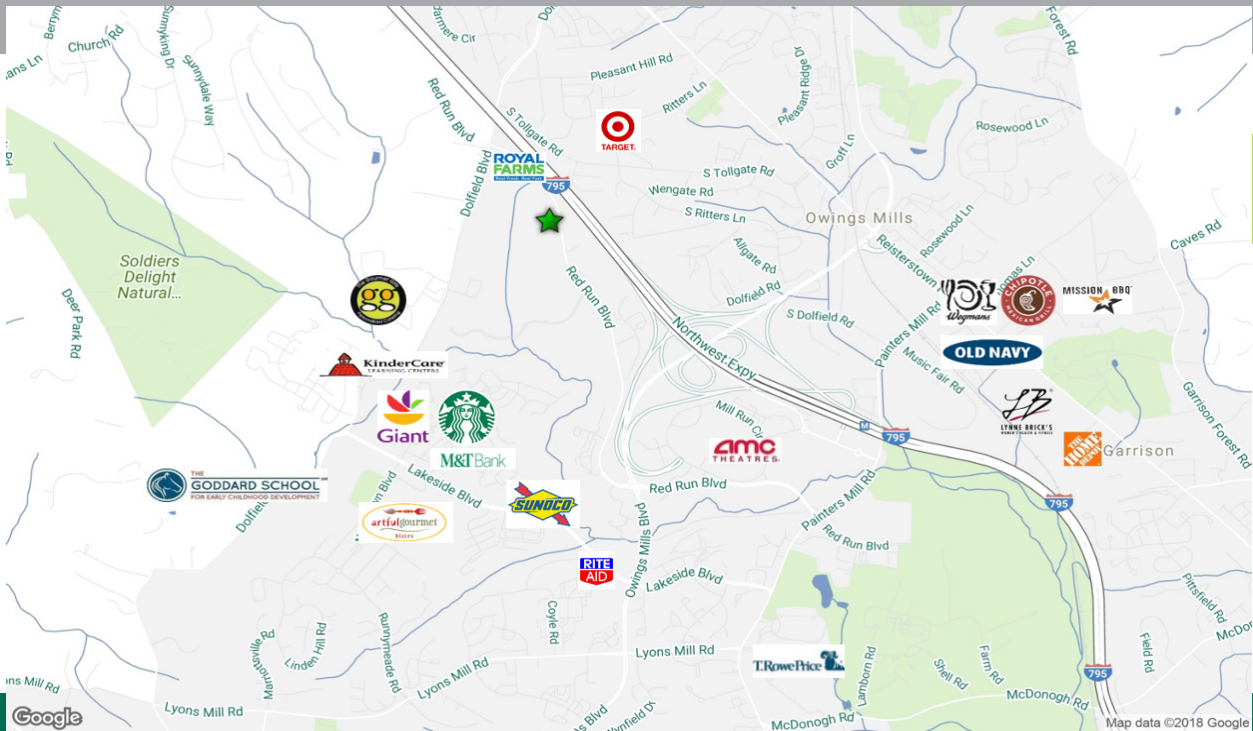
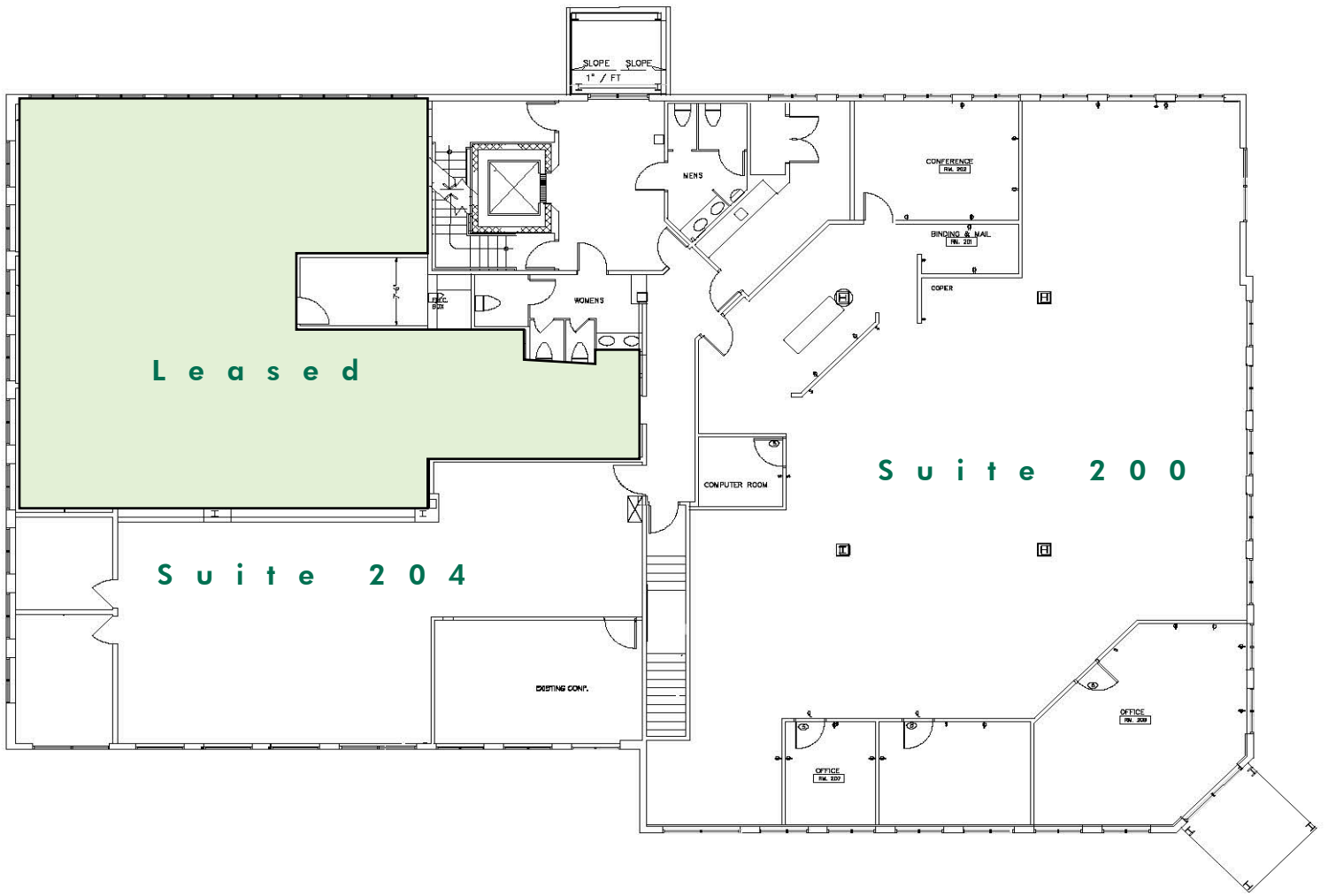
20 NEW PLANT COURT

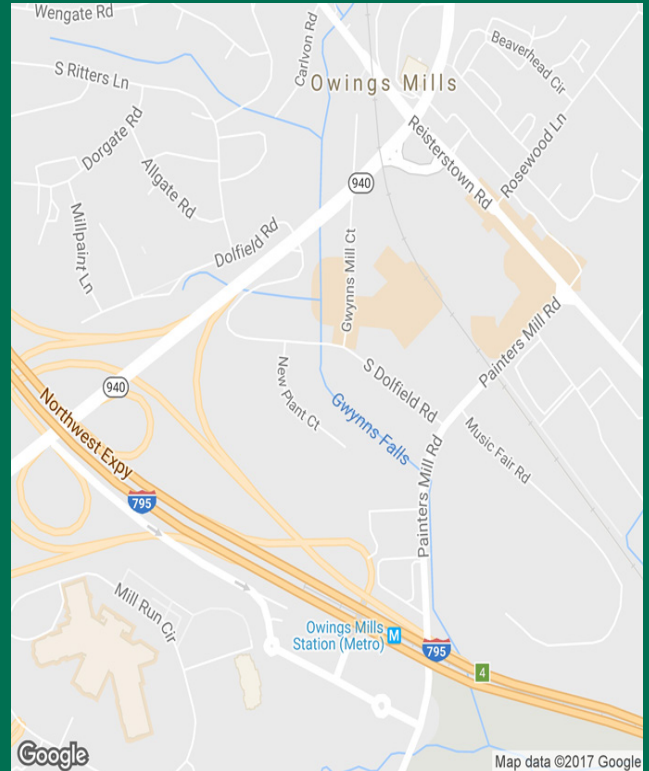
OWINGS MILLS, MD 21117



PROPERTY FEATURES

- + Developed by the owner
- + Suite 200 = 5,000 r.s.f.
- + Suite 204 = 2,100 r.s.f.
- + Common area renovations including: flooring, tenant directory, and lighting
- + Internet service through Verizon or Comcast
- + Seal Coat and Parking Lot Striping recently completed
- + Building serviced by 65 kw generator
- + Landlord will pay for Base Year taxes, Insurance and C.A.M.
- + Corner suite with great window line
- + Corporate space in quiet and beautiful setting in the heart of Owings Mills/Close to I-795 Exit, Foundry Row, Metro Center, and Mill Run Station
- + Tenants have 24/7 access to view security cameras located in the common areas & on exterior of building via phone app
- + Rate: \$16.00/SF Net of Utilities & Janitorial
- + Tenants have full control of AC/Heat





PLEASE CONTACT:

ALAN GRACE

First Vice President
+1 410 244 3110
alan.grace@cbre.com

KETCH SECOR

First Vice President
+1 410 244 3118
ketch.secor@cbre.com

© 2019 CBRE, Inc. All rights reserved. This information has been obtained from sources believed reliable, but has not been verified for accuracy or completeness. You should conduct a careful, independent investigation of the property and verify all information. Any reliance on this information is solely at your own risk. CBRE and the CBRE logo are service marks of CBRE, Inc. All other marks displayed on this document are the property of their respective owners, and the use of such logos does not imply any affiliation with or endorsement of CBRE. Photos herein are the property of their respective owners. Use of these images without the express written consent of the owner is prohibited.