



# PRIME JOHNSON COUNTY PAD SITE

2021 E. Santa Fe Street, Olathe, Kansas



## SALE PRICE: \$700,000 | 2,281 SF BUILDING

### DEMOGRAPHICS

	1 mile	3 miles	5 miles
Estimated Population	11,908	104,032	188,107
Avg. Household Income	\$66,440	\$95,618	\$110,784

- 2,281 sq ft building on 16,430 sq ft lot
- Redevelopment opportunity
- Pad site directly on Santa Fe Street
- Santa Fe carries over 38,000 cars per day
- Immediate access to Interstate 35
- Perfect for a drive-thru restaurant
- Located in Crossroads Center

 [CLICK HERE TO VIEW MORE LISTING INFORMATION](#)

For More Information Contact:

**DANIEL BROCATO** | 816.412.7303 | [dbrocato@blockandco.com](mailto:dbrocato@blockandco.com)

*Exclusive Agent*







# PRIME JOHNSON COUNTY PAD SITE

2021 E. Santa Fe Street, Olathe, Kansas

## AERIAL



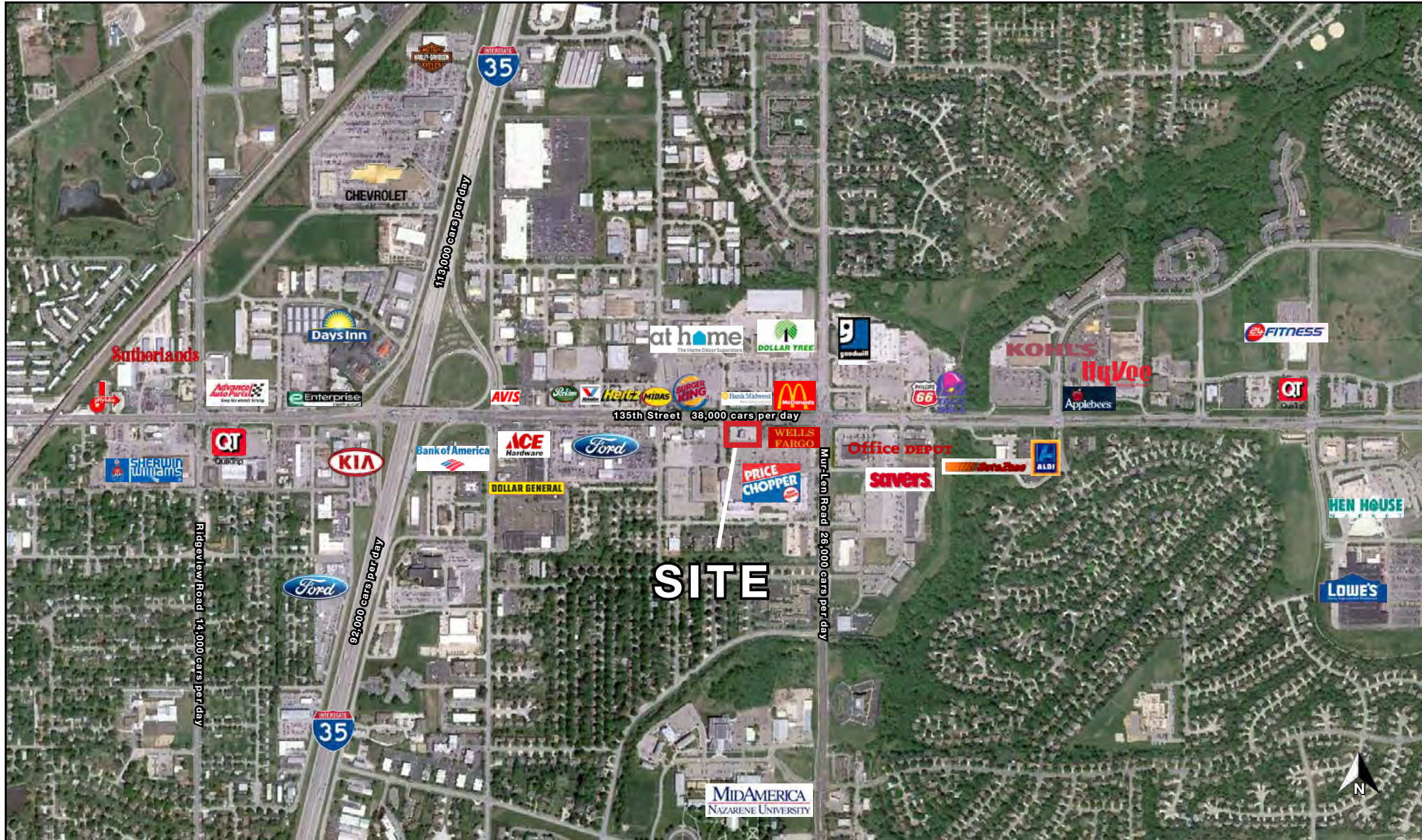




# PRIME JOHNSON COUNTY PAD SITE

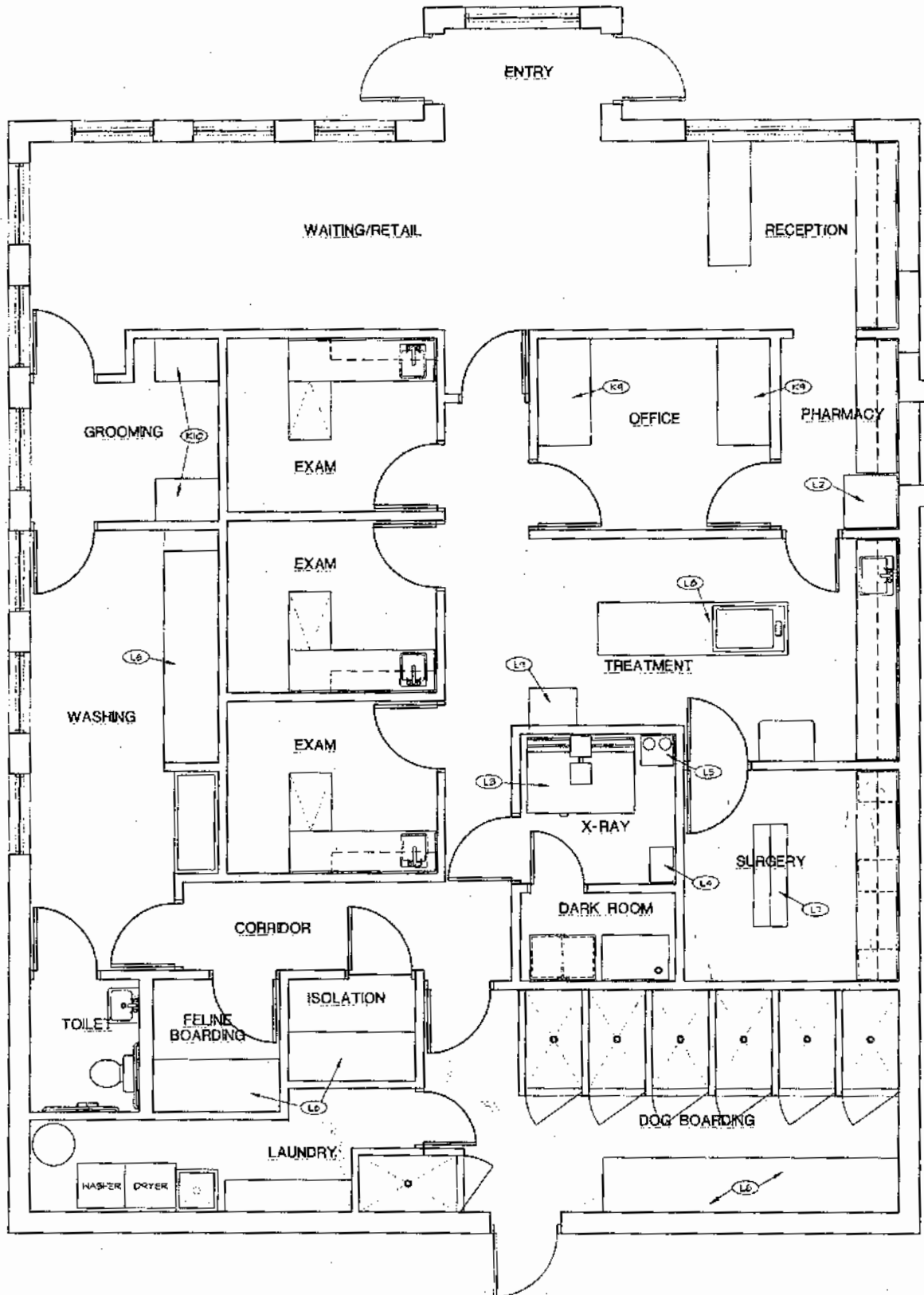
2021 E. Santa Fe Street, Olathe, Kansas

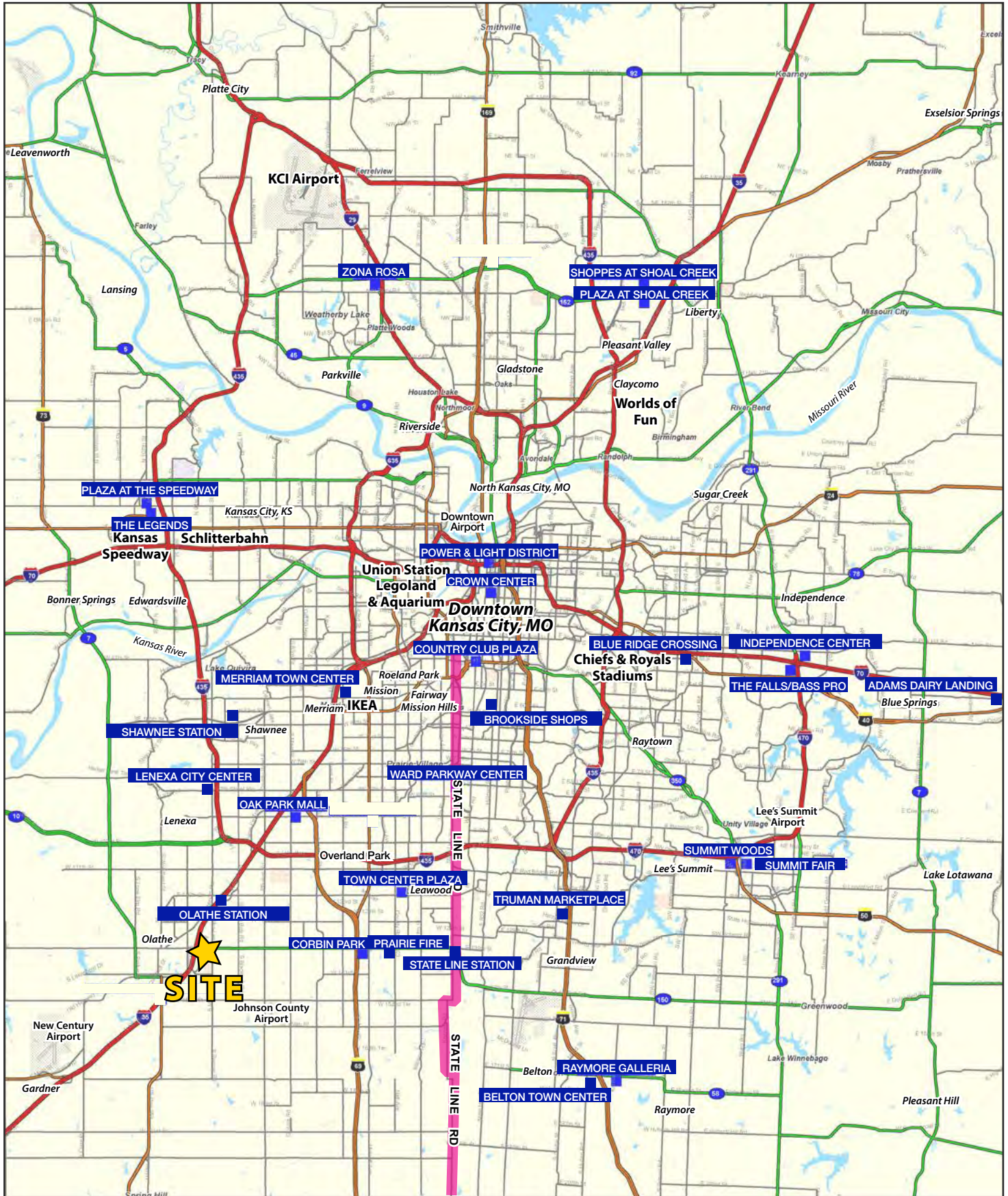
AERIAL





## FLOOR PLAN



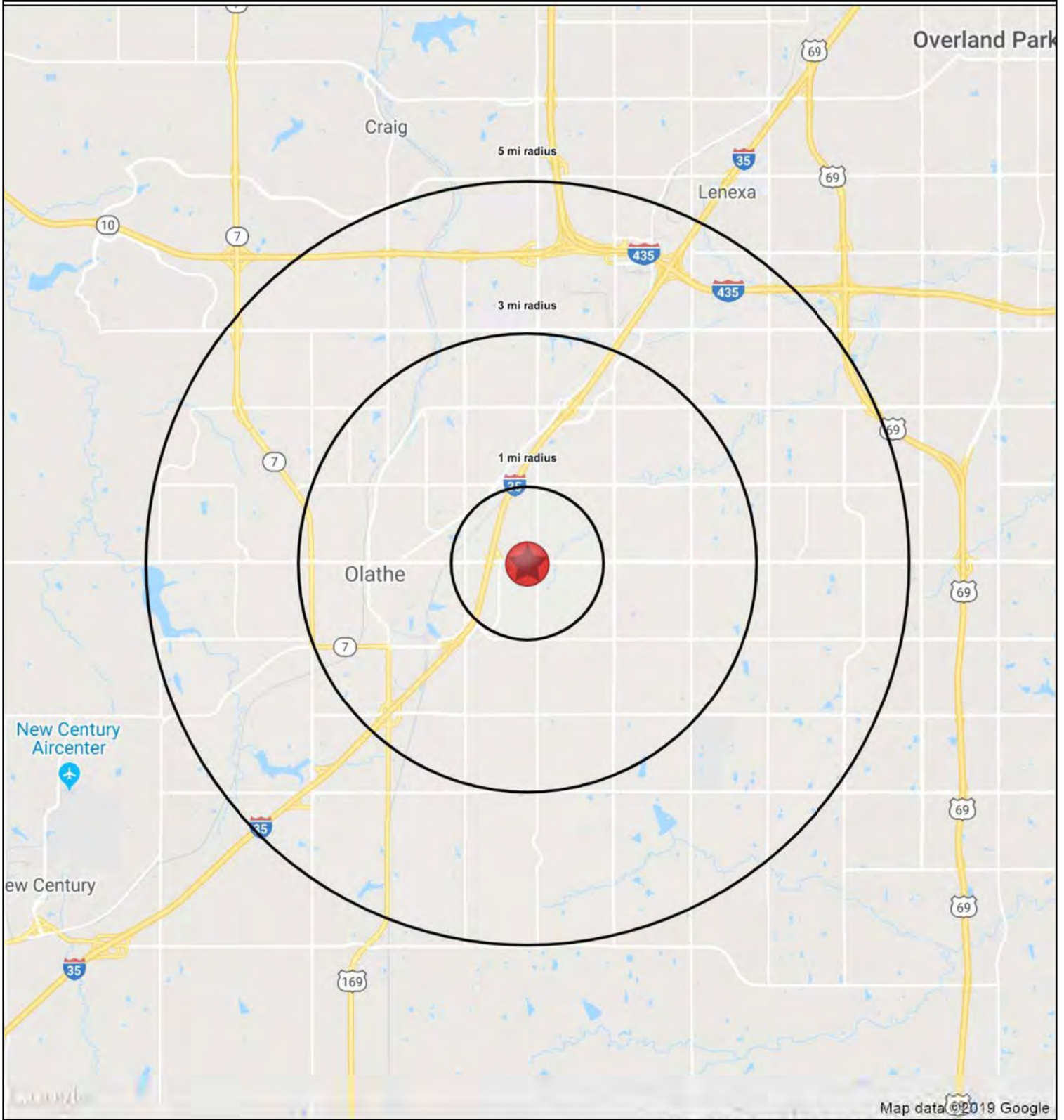






# PRIME JOHNSON COUNTY PAD SITE

2021 E. Santa Fe Street, Olathe, Kansas





# PRIME JOHNSON COUNTY PAD SITE

2021 E. Santa Fe Street, Olathe, Kansas

2021 E. Santa Fe Street Olathe, KS 66062		1 mi radius	3 mi radius	5 mi radius
POPULATION	2018 Estimated Population	11,908	104,032	188,107
	2023 Projected Population	12,536	109,251	197,481
	2010 Census Population	11,350	98,619	169,745
	2000 Census Population	10,461	83,330	130,569
	Projected Annual Growth 2018 to 2023	1.1%	1.0%	1.0%
	Historical Annual Growth 2000 to 2018	0.8%	1.4%	2.4%
	2018 Median Age	32.3	34	35.1
HOUSEHOLDS	2018 Estimated Households	4,685	38,514	69,831
	2023 Projected Households	4,968	40,663	73,659
	2010 Census Households	4,337	35,467	61,501
	2000 Census Households	3,763	28,978	46,013
	Projected Annual Growth 2018 to 2023	1.2%	1.1%	1.1%
	Historical Annual Growth 2000 to 2018	1.4%	1.8%	2.9%
RACE AND ETHNICITY	2018 Estimated White	76.2%	79.8%	81.5%
	2018 Estimated Black or African American	9.1%	6.3%	5.7%
	2018 Estimated Asian or Pacific Islander	3.8%	5.4%	6.1%
	2018 Estimated American Indian or Native Alaskan	0.7%	0.4%	0.4%
	2018 Estimated Other Races	10.3%	8.1%	6.4%
	2018 Estimated Hispanic	17.1%	11.9%	9.2%
INCOME	2018 Estimated Average Household Income	\$66,440	\$95,618	\$110,784
	2018 Estimated Median Household Income	\$59,031	\$83,725	\$96,943
	2018 Estimated Per Capita Income	\$26,460	\$35,475	\$41,188
EDUCATION (AGE 25+)	2018 Estimated Elementary (Grade Level 0 to 8)	5.0%	3.1%	2.3%
	2018 Estimated Some High School (Grade Level 9 to 11)	5.8%	3.2%	2.5%
	2018 Estimated High School Graduate	18.2%	17.0%	14.2%
	2018 Estimated Some College	24.2%	20.7%	18.4%
	2018 Estimated Associates Degree Only	10.2%	9.2%	8.6%
	2018 Estimated Bachelors Degree Only	24.4%	30.4%	34.4%
	2018 Estimated Graduate Degree	12.1%	16.4%	19.6%
BUSINESS	2018 Estimated Total Businesses	929	3,676	6,971
	2018 Estimated Total Employees	10,774	50,217	101,570
	2018 Estimated Employee Population per Business	11.6	13.7	14.6
	2018 Estimated Residential Population per Business	12.8	28.3	27.0