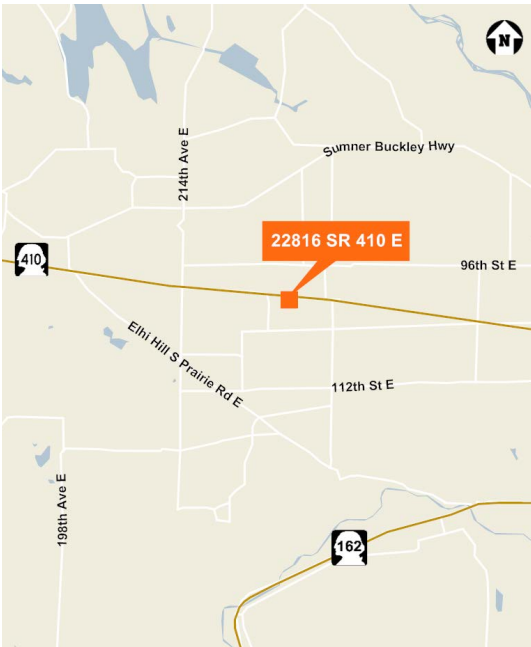


## Former Pro Build Site in Eastern Pierce County



**22816 SR 410 East**  
Bonney Lake, WA 98391



**±19,100 SF building; including ±9,600 SF warehouse**

Existing mezzanine office area

Two parcel site totaling 3.15 acres of land (137,214 SF)

17,379 CPD at SR 410 & 234th Avenue E

Zoning C-2 (18.08.020 land use, City of Bonney Lake)

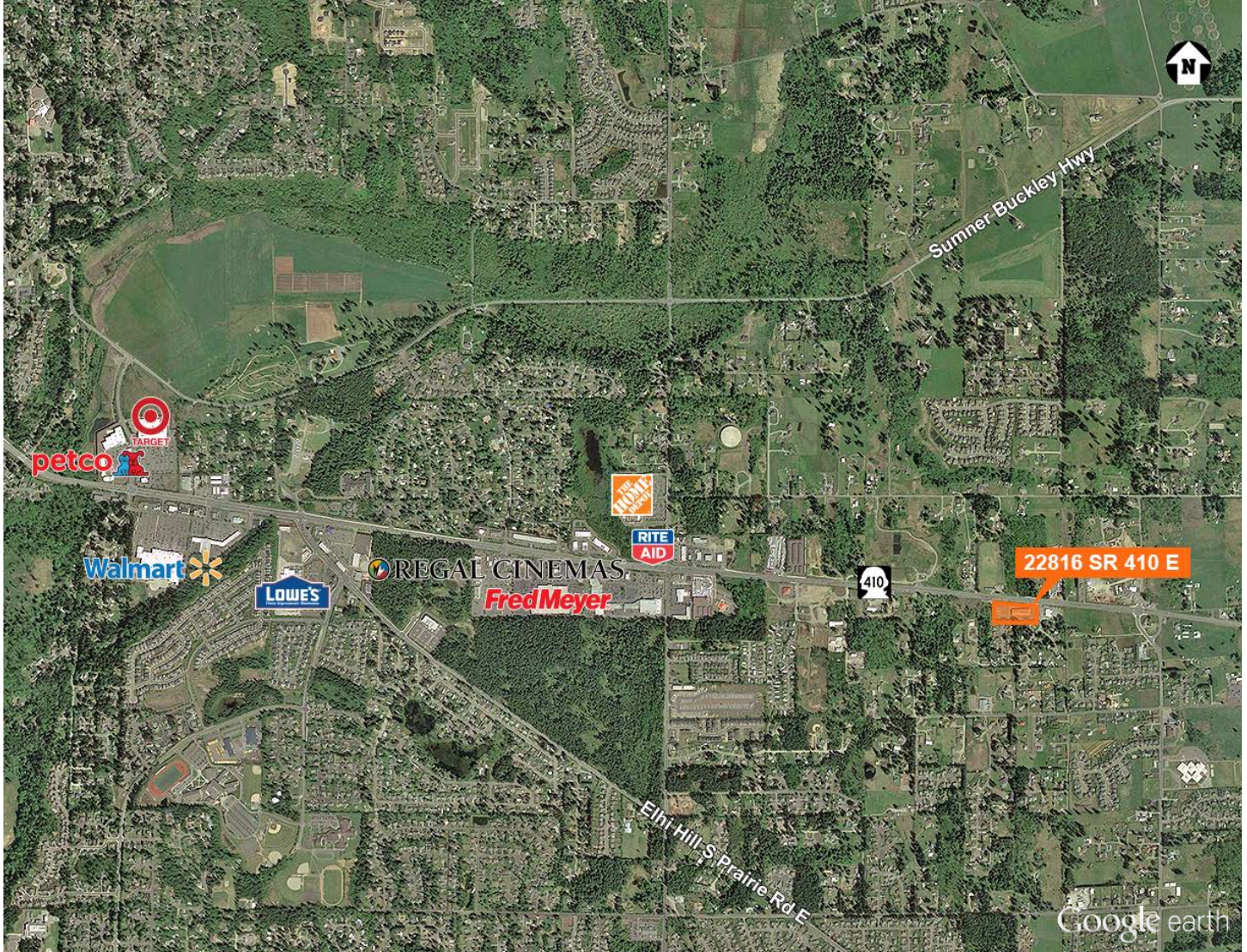
Roll-open doors at grade

Price: \$1,400,000.00

### Contact

**Jerome O'Leary**  
253.779.9292  
joleary@kiddermathews.com

## Former Pro Build



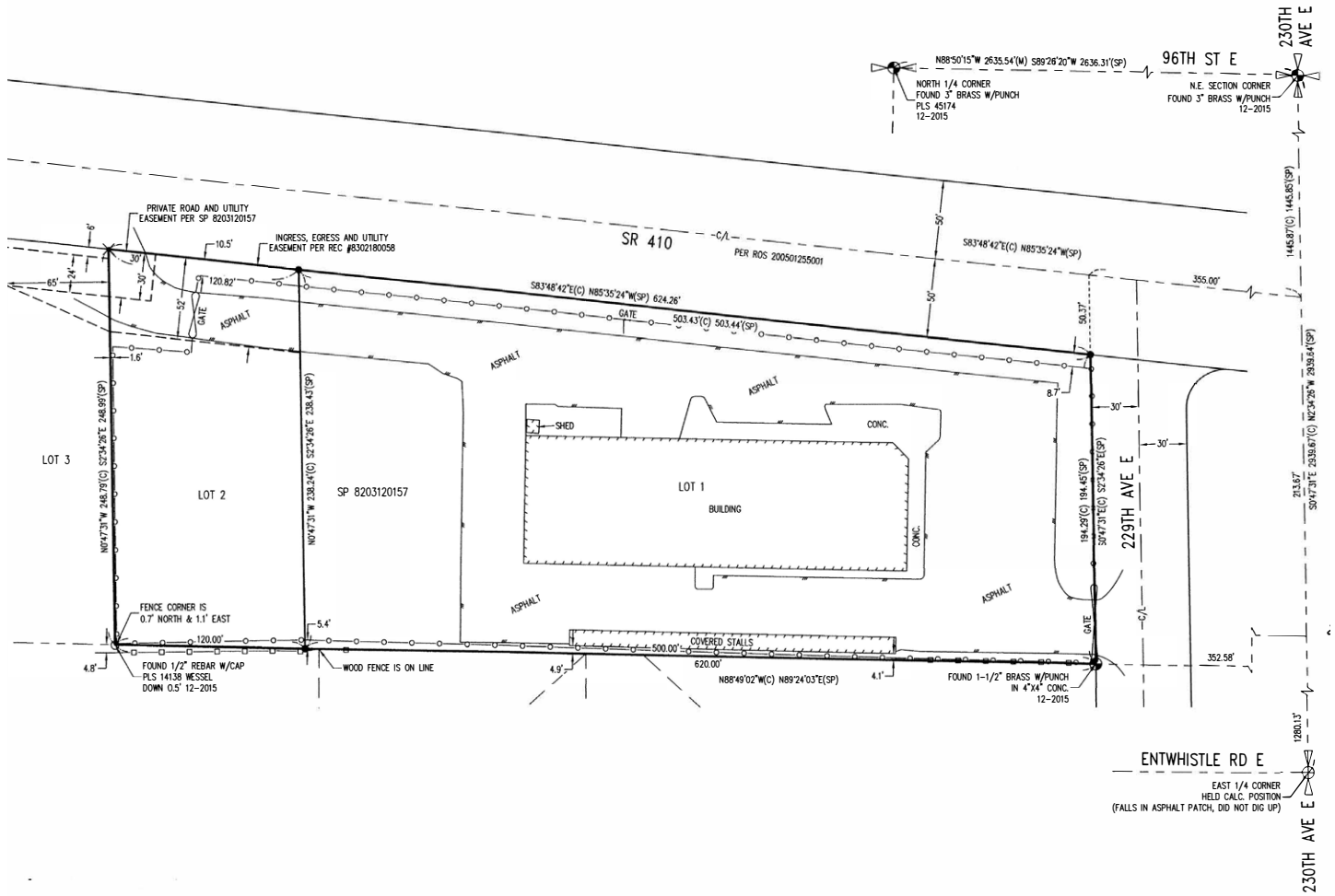
### DEMOGRAPHICS

	1 mile	3 miles	5 miles
Population	3,719	33,011	57,242
Average Household Income	\$77,322	\$82,783	\$85,519

### Contact

**Jerome O'Leary**  
 253.779.9292  
 joleary@kiddermathews.com

## Former Pro Build



### Contact

**Jerome O'Leary**

253.779.9292

joleary@kiddermathews.com