

HILLVIEW EXECUTIVE PARK

830 & 920 HILLVIEW COURT, MILPITAS, CA
Class A Office Space



**New Common
Area Upgrades**

3055 Olin Street, Suite 2200
San Jose, CA 95128
P: 408.970.9990 F: 408.987.4156

Contact Exclusive Agent
Tom Todd
ttodd@ngkf.com
408.982.8473
CA RE License #01200289

NEWMARK

The distributor of this communication is performing acts for which a real estate license is required. The information contained herein has been obtained from sources deemed reliable but has not been verified and no guarantee, warranty or representation, either express or implied, is made with respect to such information. Terms of sale or lease and availability are subject to change or withdrawal without notice. 10-1226 • 11/20

- Two Class A Office Buildings
- Professional Office Park Environment
- Upgraded Lobbies & Common Areas
- Ample Parking: 4/1,000 Ratio
- Great Access to Highway 680, 880, and 237
- Walking Distance to Hotels & Restaurants
- Secure Card Key Access After Hours
- Close to City Hall
- Numerous Retail Services & Restaurants Nearby



Contact Exclusive Agent

Tom Todd
ttodd@ngkf.com
408.982.8473
CA RE License #01200289

BUILDING	SUITE #	SQUARE FEET	AVAILABLE
830 Hillview Court	200	±1,203	NOW
830 Hillview Court	245	±1,926	NOW
920 Hillview Court	160	±2,531	NOW
920 Hillview Court	280	±2,586	NOW
830 Hillview Court	140	±4,117	NOW

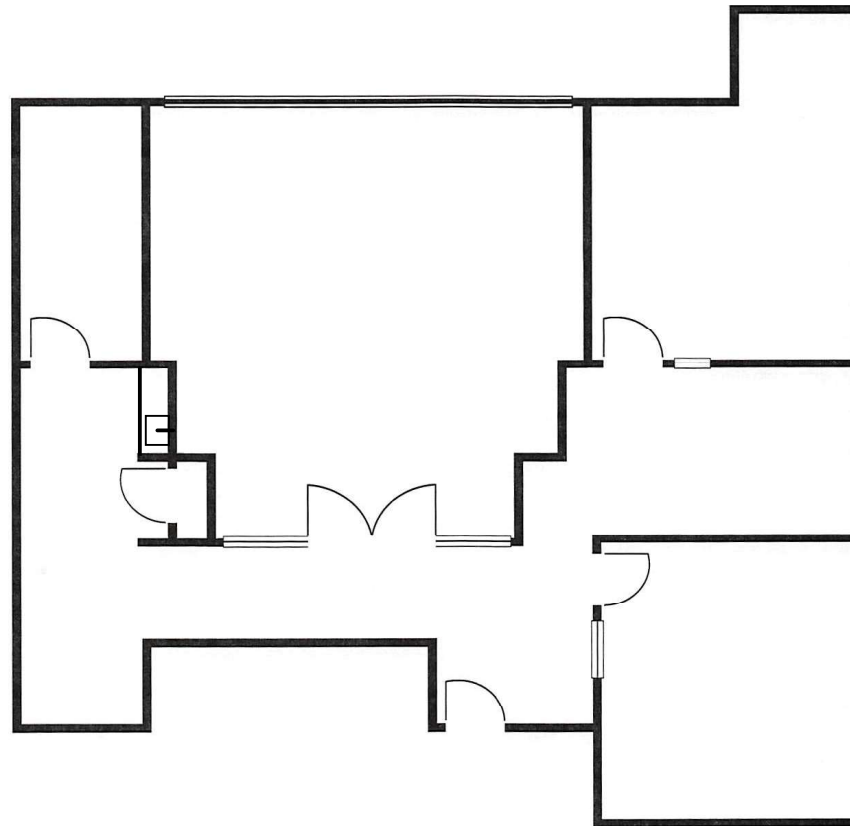


Contact Exclusive Agent

Tom Todd
 ttodd@ngkf.com
 408.982.8473
 CA RE License #01200289

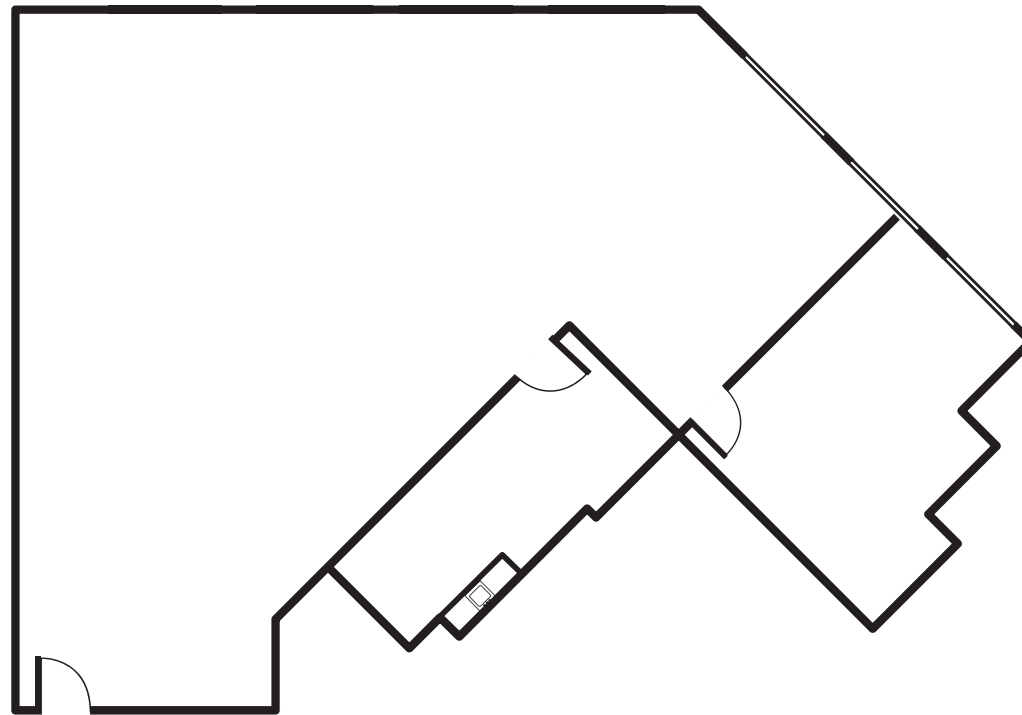
830 Hillview Court • Suite 200

±1,203 SF



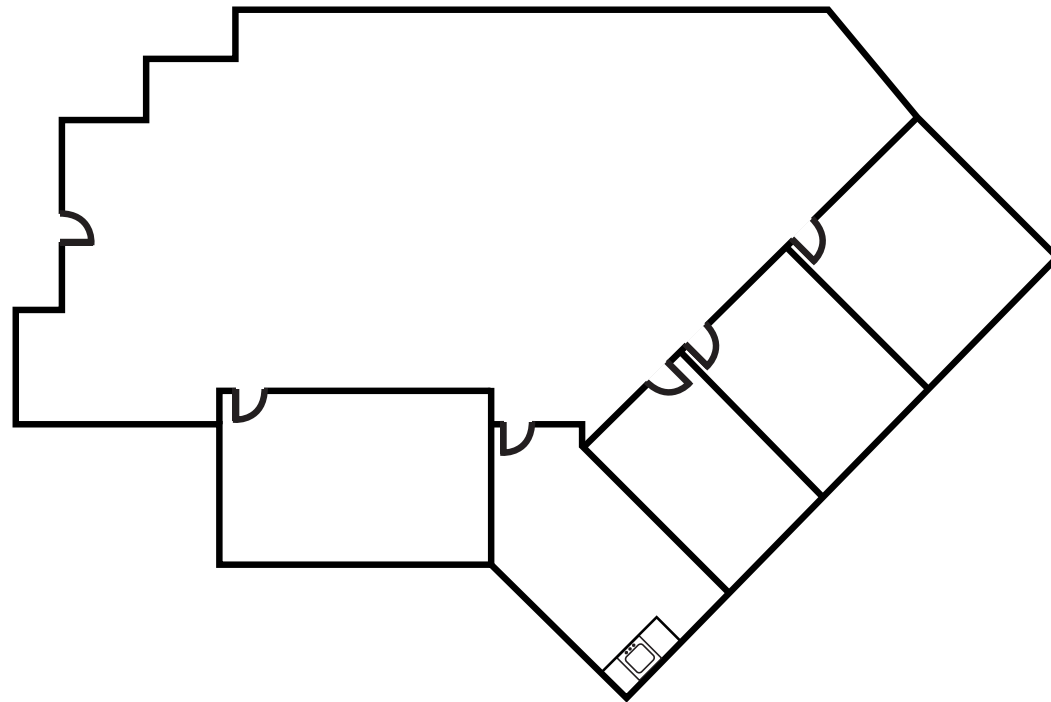
830 Hillview Court • Suite 245

±1,926 SF



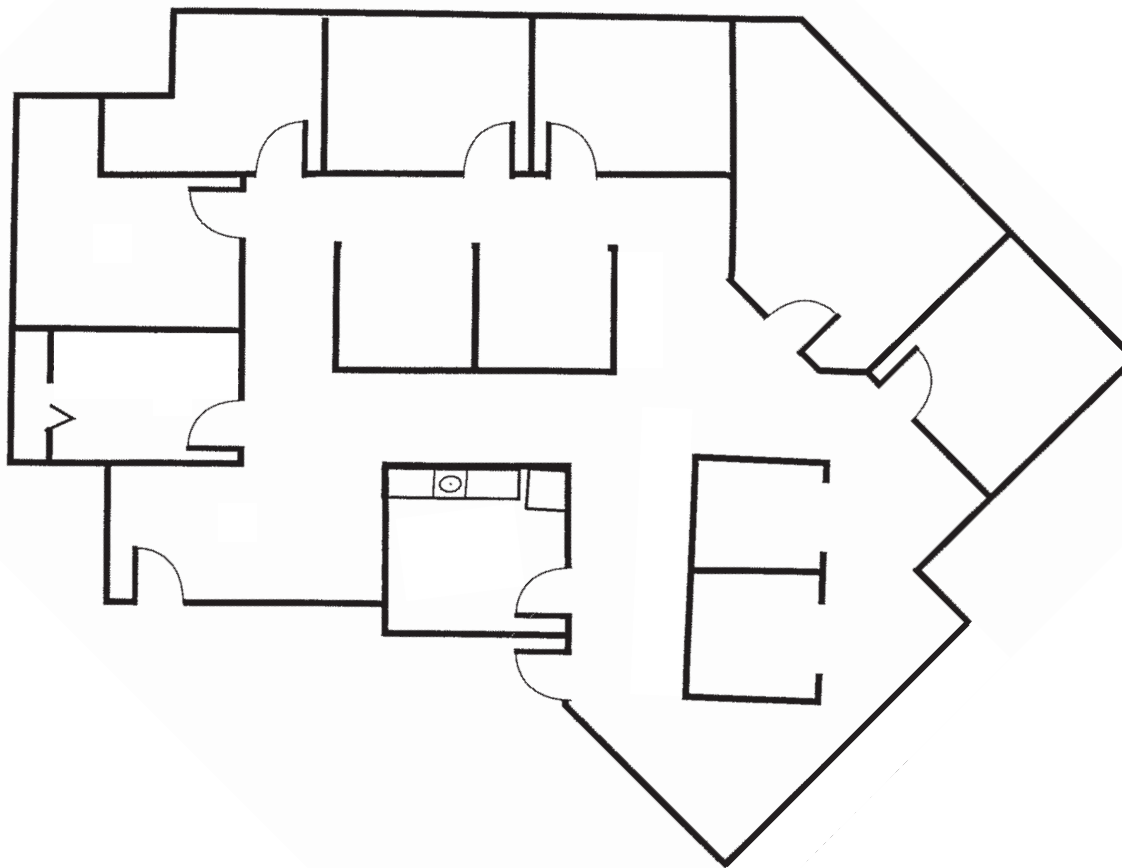
920 Hillview Court • Suite 160

±2,531 SF



920 Hillview Court • Suite 280

±2,586 SF



830 Hillview Court • Suite 140

±4,117 SF

