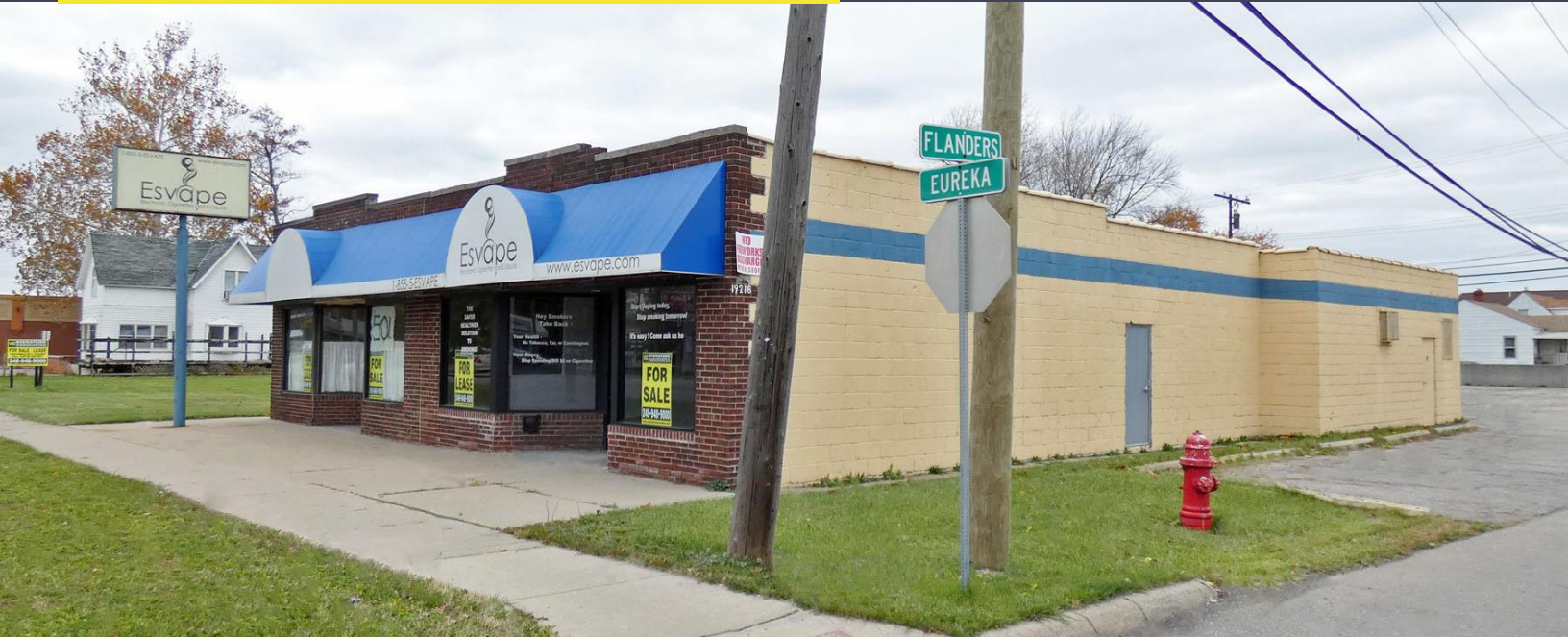


19218 EUREKA ROAD
SOUTHGATE, MICHIGAN

RETAIL FOR SALE OR LEASE
3,680 Square Feet Available



**SIGNATURE
ASSOCIATES**
KNOW SIGNATURE | KNOW RESULTS



PROPERTY FEATURES

- 3,680 total available square feet
- 0.31 acres
- Zoned C-2
- Abundant Parking
- Lease Rate: TBD
- Sale Price: \$500,000 (\$135.87/sq.ft.)

Comments: Corner lot can be combined with adjacent land parcel to form over 1.24 acres, 2 buildings, and 240' on Eureka Road. Heavily traveled retail corridor near I-75, Southland Mall, and Detroit Metro Airport.



For more information, please contact:

JUSTIN GAFFREY
(248) 799 3143
jgaffrey@signatureassociates.com

SIGNATURE ASSOCIATES
One Towne Square, Suite 1200
Southfield, MI 48076
www.signatureassociates.com

19218 Eurkea Road – Southgate, Michigan

Retail For Sale or Lease

3,680
Square Feet
AVAILABLE

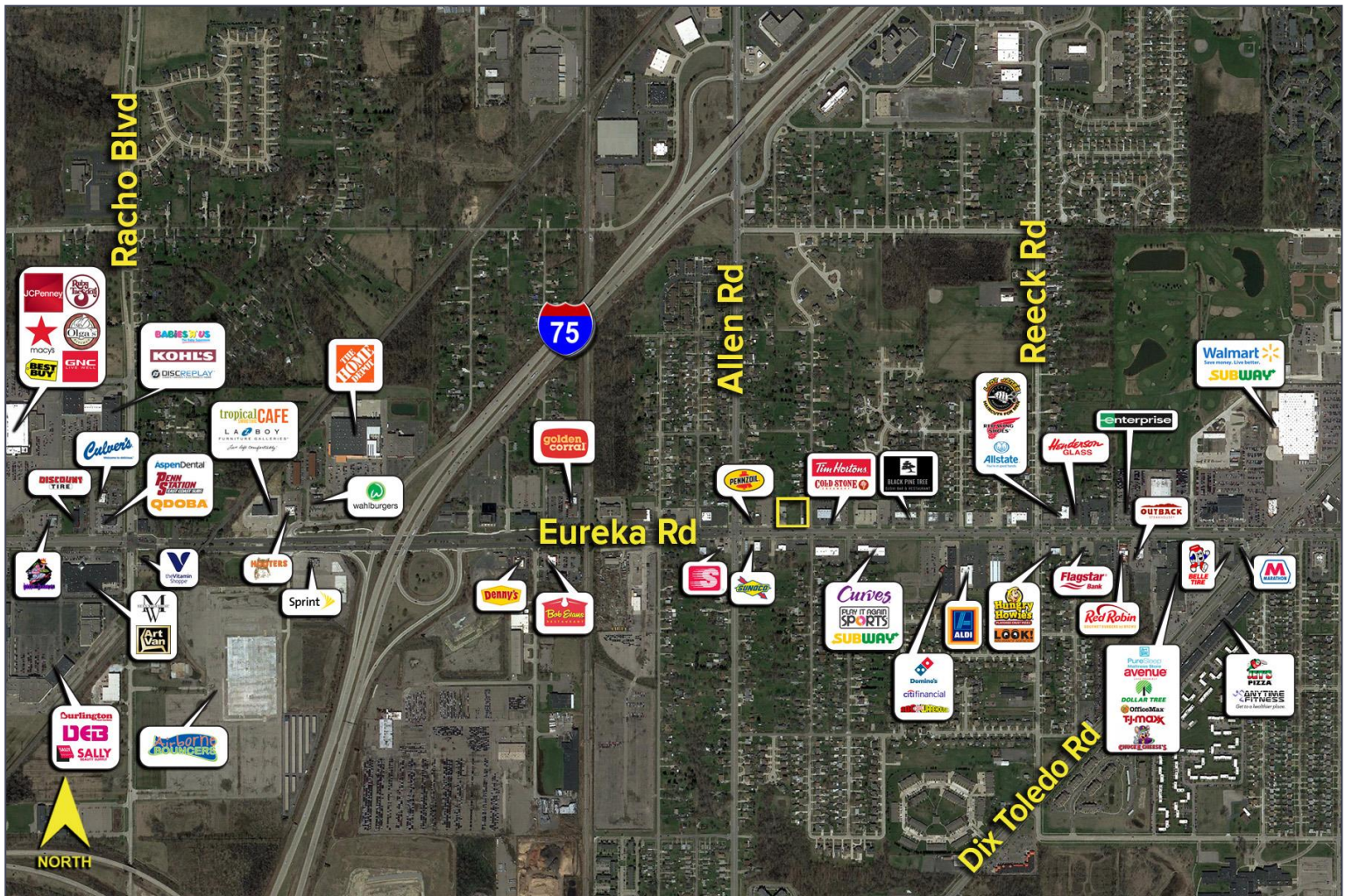


DEMOGRAPHICS

	POPULATION	MED. HH INCOME
1 MILE	6,506	\$54,449
3 MILE	83,286	\$62,636
5 MILE	223,856	\$61,568

TRAFFIC COUNTS (TWO-WAY)

23,150	Eureka Rd. W. of Allen Rd. 2-Way
39,904	Eureka Rd. E. of Allen Rd. 2-Way
35,781	Allen Rd. N. of Eureka Rd. 2-Way
20,189	Allen Rd. S. of Eureka Rd. 2-Way



For more information, please contact:

JUSTIN GAFFREY

(248) 799 3143

jgaffrey@signatureassociates.com

SIGNATURE ASSOCIATES

One Towne Square, Suite 1200

Southfield, MI 48076

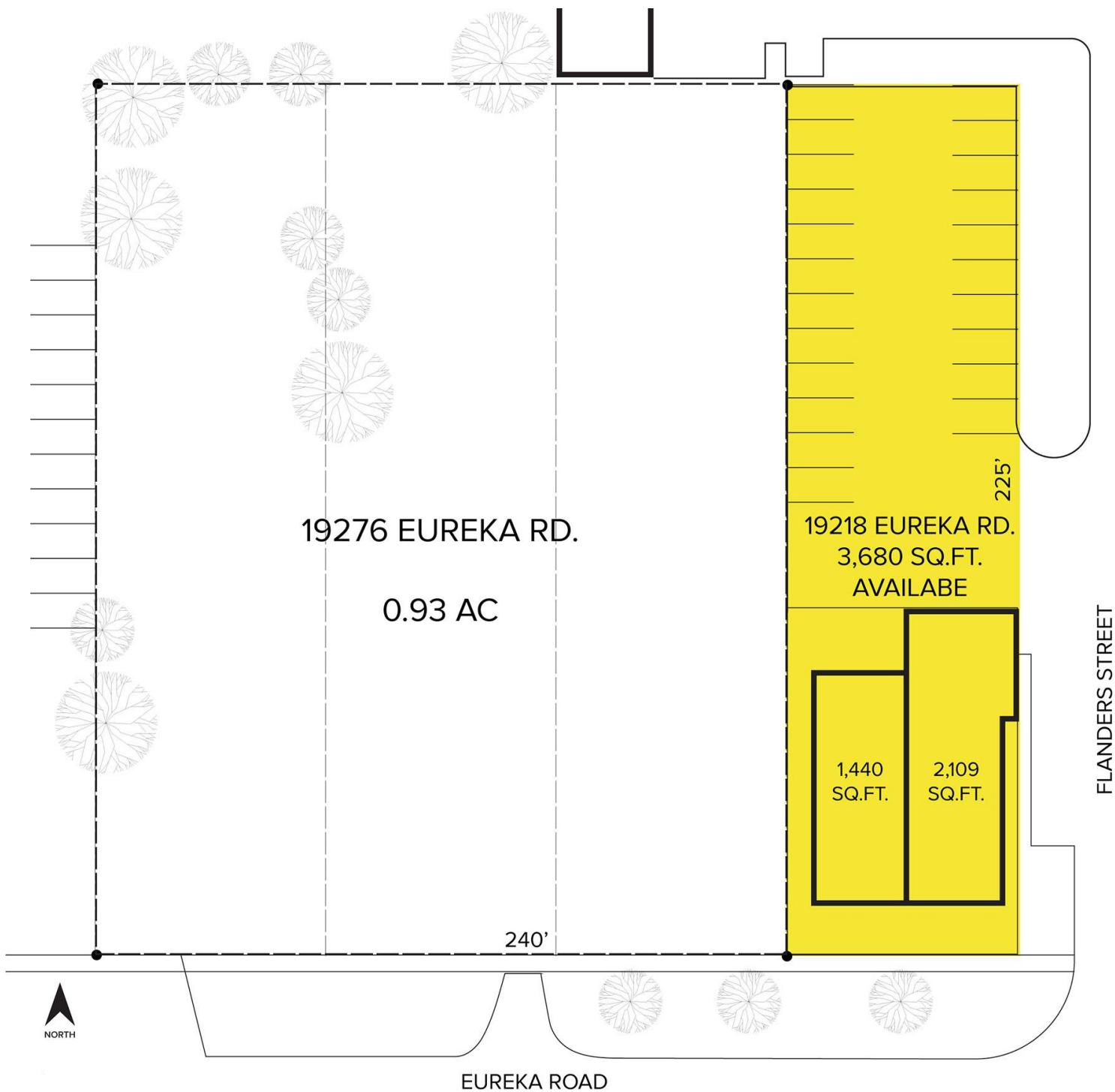
www.signatureassociates.com

19218 Eureka Road – Southgate, Michigan

Retail For Sale or Lease

3,680
Square Feet
AVAILABLE

Site Plan



For more information, please contact:

JUSTIN GAFFREY
(248) 799 3143
jgaffrey@signatureassociates.com

SIGNATURE ASSOCIATES
One Towne Square, Suite 1200
Southfield, MI 48076
www.signatureassociates.com