

FOR LEASE

---

888 Portola Road, Portola Valley, CA



PREMIER  
PROPERTIES  
COMMERCIAL REAL ESTATE

---



## OFFICE BUILDING FOR LEASE

±1,800 Sq. Ft. - With Private On-Site Parking (9 Spaces)

Also Available: ±1,750 Sq. Ft of On-Site Storage

Available Immediately

JESSE EBNER

Associate

---

Phone: 650.618.3017  
jesse.ebner@prprop.com  
bre license #02055989

JON GOLDMAN

Partner

---

Phone: 650.618.3003  
jon.goldman@prprop.com  
bre license #01295503

AVO IZMIRLIAN

Senior Associate

---

Phone: 650.618.3016  
avo.izmirlian@prprop.com  
bre license #01919004

FOR PROPERTY DETAILS AND MORE LISTINGS

[PremierPaloAlto.com](http://PremierPaloAlto.com)

FOR LEASE

---

888 Portola Road, Portola Valley, CA



**PREMIER**  
**PROPERTIES**  
COMMERCIAL REAL ESTATE

---



JESSE EBNER

Associate

---

Phone: 650.618.3017

[jesse.ebner@prprop.com](mailto:jesse.ebner@prprop.com)

bre license #02055989

JON GOLDMAN

Partner

---

Phone: 650.618.3003

[jon.goldman@prprop.com](mailto:jon.goldman@prprop.com)

bre license #01295503

AVO IZMIRLIAN

Senior Associate

---

Phone: 650.618.3016

[avo.izmirlian@prprop.com](mailto:avo.izmirlian@prprop.com)

bre license #01919004

FOR PROPERTY DETAILS AND MORE LISTINGS

[PremierPaloAlto.com](http://PremierPaloAlto.com)

FOR LEASE

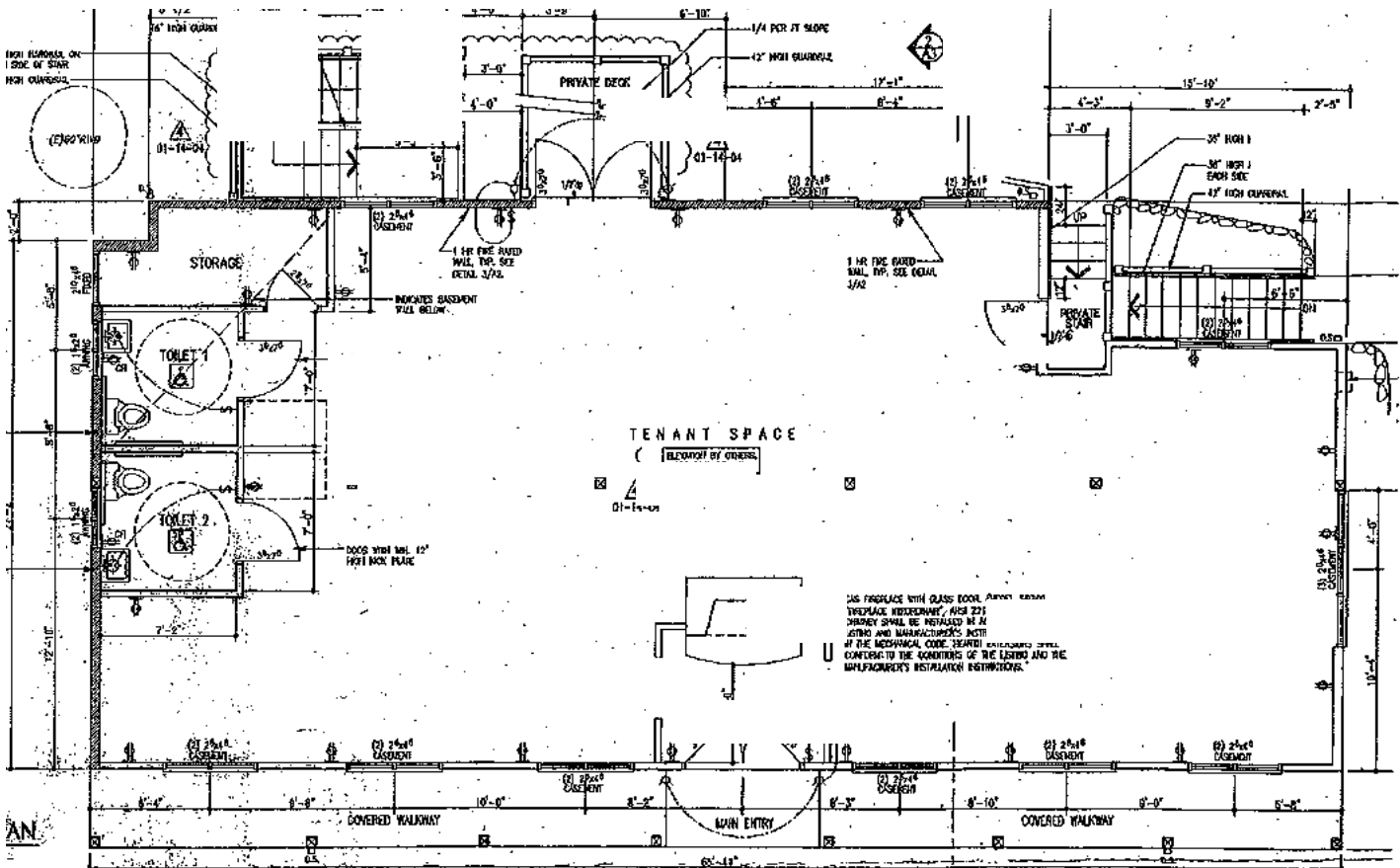
888 Portola Road, Portola Valley, CA



PREMIER  
PROPERTIES  
COMMERCIAL REAL ESTATE

PROPERTY DESCRIPTION & FLOOR PLAN

- Open Floor Plan with Plenty of Natural Light
- High Ceilings & Large Windows
- Back Patio & Private Parking Lot
- Prominent Street-Front Presence



May not be accurate / to scale

JESSE EBNER  
Associate

Phone: 650.618.3017  
jesse.ebner@prprop.com  
bre license #O2055989

JON GOLDMAN  
Partner

Phone: 650.618.3003  
jon.goldman@prprop.com  
bre license #O1295503

AVO IZMIRLIAN  
Senior Associate

Phone: 650.618.3016  
avo.izmirlian@prprop.com  
bre license #O1919004

FOR LEASE

888 Portola Road, Portola Valley, CA



PREMIER  
PROPERTIES  
COMMERCIAL REAL ESTATE

EXTERIOR PHOTO



888 Portola Road has 3 private convenience parking spaces in front and 6 reserved commercial parking spaces in the rear parking lot.

JESSE EBNER

Associate

Phone: 650.618.3017  
jesse.ebner@prprop.com  
bre license #02055989

JON GOLDMAN

Partner

Phone: 650.618.3003  
jon.goldman@prprop.com  
bre license #01295503

AVO IZMIRLIAN

Senior Associate

Phone: 650.618.3016  
avo.izmirlian@prprop.com  
bre license #01919004

FOR PROPERTY DETAILS AND MORE LISTINGS

[PremierPaloAlto.com](http://PremierPaloAlto.com)

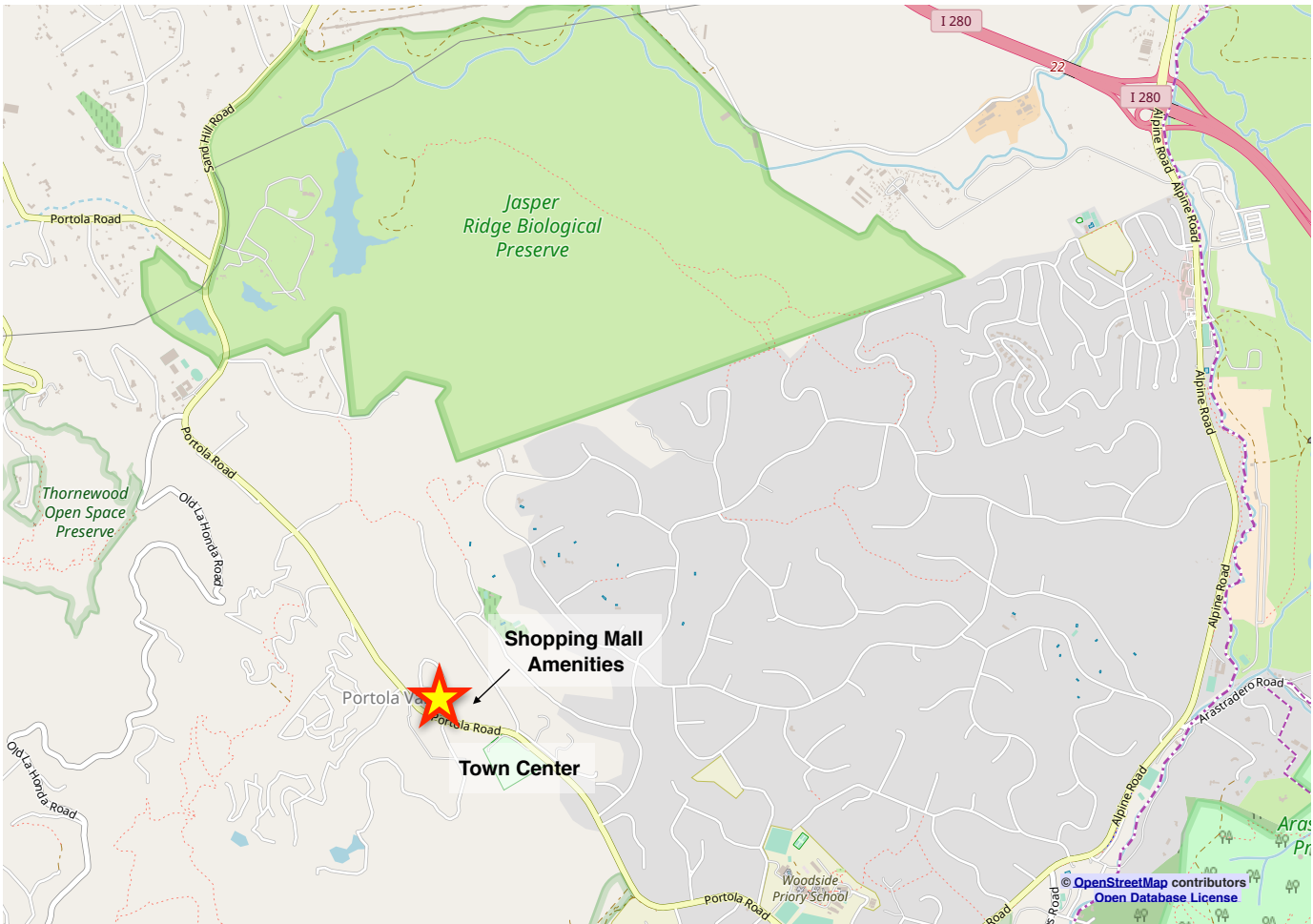
FOR LEASE

888 Portola Road, Portola Valley, CA



PREMIER  
PROPERTIES  
COMMERCIAL REAL ESTATE

SITE LOCATION



Neither the property owner nor Premier Property Management make any representations or warranty with regard to the information contained within this advertising flyer and the information contained herein should not be relied upon for validity, accuracy or completeness. Prior to submitting an offer, prospective purchasers or tenants must perform their own due diligence including consultation with legal and tax counsel, architectural, construction, and zoning experts and all other necessary consultants in order to confirm all relevant information.

JESSE EBNER

Associate

Phone: 650.618.3017  
jesse.ebner@prprop.com  
bre license #02055989

JON GOLDMAN

Partner

Phone: 650.618.3003  
jon.goldman@prprop.com  
bre license #01295503

AVO IZMIRLIAN

Senior Associate

Phone: 650.618.3016  
avo.izmirlian@prprop.com  
bre license #01919004

FOR PROPERTY DETAILS AND MORE LISTINGS

[PremierPaloAlto.com](http://PremierPaloAlto.com)