

84

WEST SANTA  
CLARA



Premier Downtown San Jose Office Space

For Lease |  $\pm 1,153$  -  $\pm 2,480$  SF

**CBRE**





84 West Santa Clara Street, Downtown San Jose

For Lease | ±1,153 - ±2,480 SF

### Building Upgrades

- Elevator modernization
- Restroom upgrades
- New Entry
- Outdoor collaboration areas
- Enhanced Security Upgrades
- Shower
- Bike storage



PLEASE CONTACT  
ONE OF THESE  
EXCLUSIVE AGENTS:

**Vince Machado**  
Senior Vice President  
Lic. 01317553  
+1 408 453 7411  
vince.machado@cbre.com

**Matthew Taylor**  
Senior Vice President  
Lic. 01897355  
+1 408 453 7469  
matthew.taylor@cbre.com

**Tiffany Bird**  
Associate  
Lic. 01936335  
+1 408 453 7450  
tiffany.bird@cbre.com

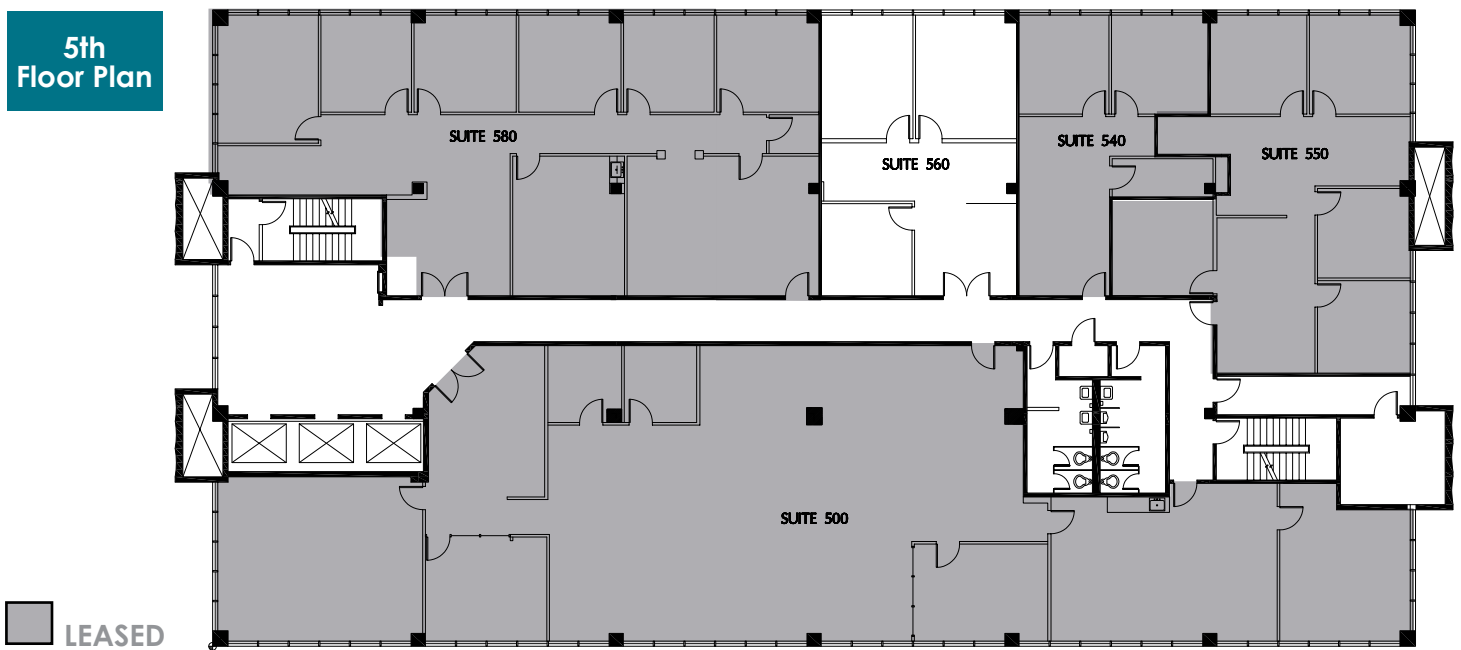
CBRE, Inc.  
225 W. Santa Clara Street  
12th Floor, San Jose, CA 95113  
www.cbre.us/siliconvalley

© 2018 CBRE, Inc. This information has been obtained from sources believed reliable. We have not verified it and make no guarantee, warranty or representation about it. Any projections, opinions, assumptions or estimates used are for example only and do not represent the current or future performance of the property. You and your advisors should conduct a careful, independent investigation of the property to determine to your satisfaction the suitability of the property for your needs. Photos herein are the property of their respective owners and use of these images without the express written consent of the owner is prohibited. CBRE and the CBRE logo are service marks of CBRE, Inc. and/or its affiliated or related companies in the United States and other countries. All other marks displayed on this document are the property of their respective owners.



**Suite 560: ±1,153 SF**

**5th  
Floor Plan**



NOT TO SCALE

PLEASE CONTACT  
ONE OF THESE  
EXCLUSIVE AGENTS:

**Vince Machado**  
Senior Vice President  
Lic. 01317553  
+1 408 453 7411  
vince.machado@cbre.com

**Matthew Taylor**  
Senior Vice President  
Lic. 01897355  
+1 408 453 7469  
matthew.taylor@cbre.com

**Tiffany Bird**  
Associate  
Lic. 01936335  
+1 408 453 7450  
tiffany.bird@cbre.com

CBRE, Inc.  
225 W. Santa Clara Street  
12th Floor, San Jose, CA 95113  
www.cbre.us/siliconvalley

**Suite 690: ±2,480 SF**

**6th  
Floor Plan**



NOT TO SCALE

PLEASE CONTACT  
ONE OF THESE  
EXCLUSIVE AGENTS:

**Vince Machado**  
Senior Vice President  
Lic. 01317553  
+1 408 453 7411  
vince.machado@cbre.com

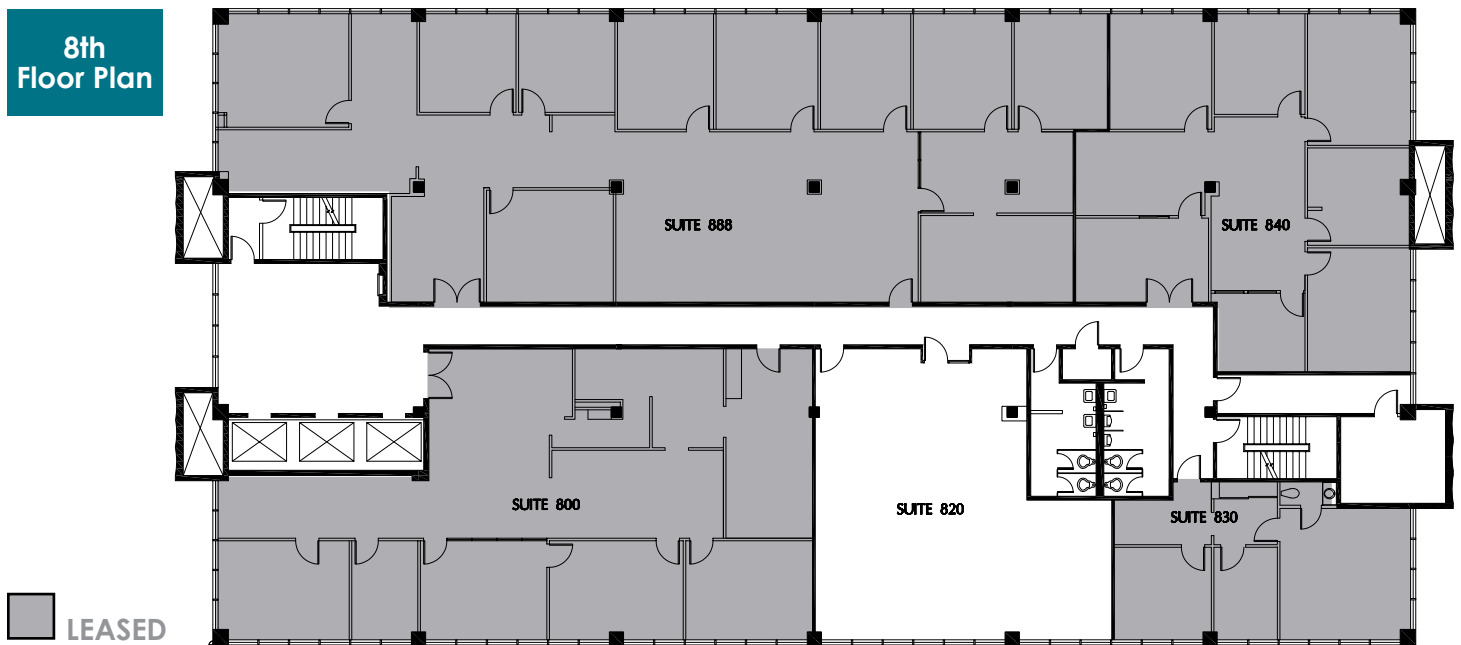
**Matthew Taylor**  
Senior Vice President  
Lic. 01897355  
+1 408 453 7469  
matthew.taylor@cbre.com

**Tiffany Bird**  
Associate  
Lic. 01936335  
+1 408 453 7450  
tiffany.bird@cbre.com

CBRE, Inc.  
225 W. Santa Clara Street  
12th Floor, San Jose, CA 95113  
www.cbre.us/siliconvalley

**Suite 820: ±1,528 SF**

**8th  
Floor Plan**



NOT TO SCALE

PLEASE CONTACT  
ONE OF THESE  
EXCLUSIVE AGENTS:

**Vince Machado**  
Senior Vice President  
Lic. 01317553  
+1 408 453 7411  
vince.machado@cbre.com

**Matthew Taylor**  
Senior Vice President  
Lic. 01897355  
+1 408 453 7469  
matthew.taylor@cbre.com

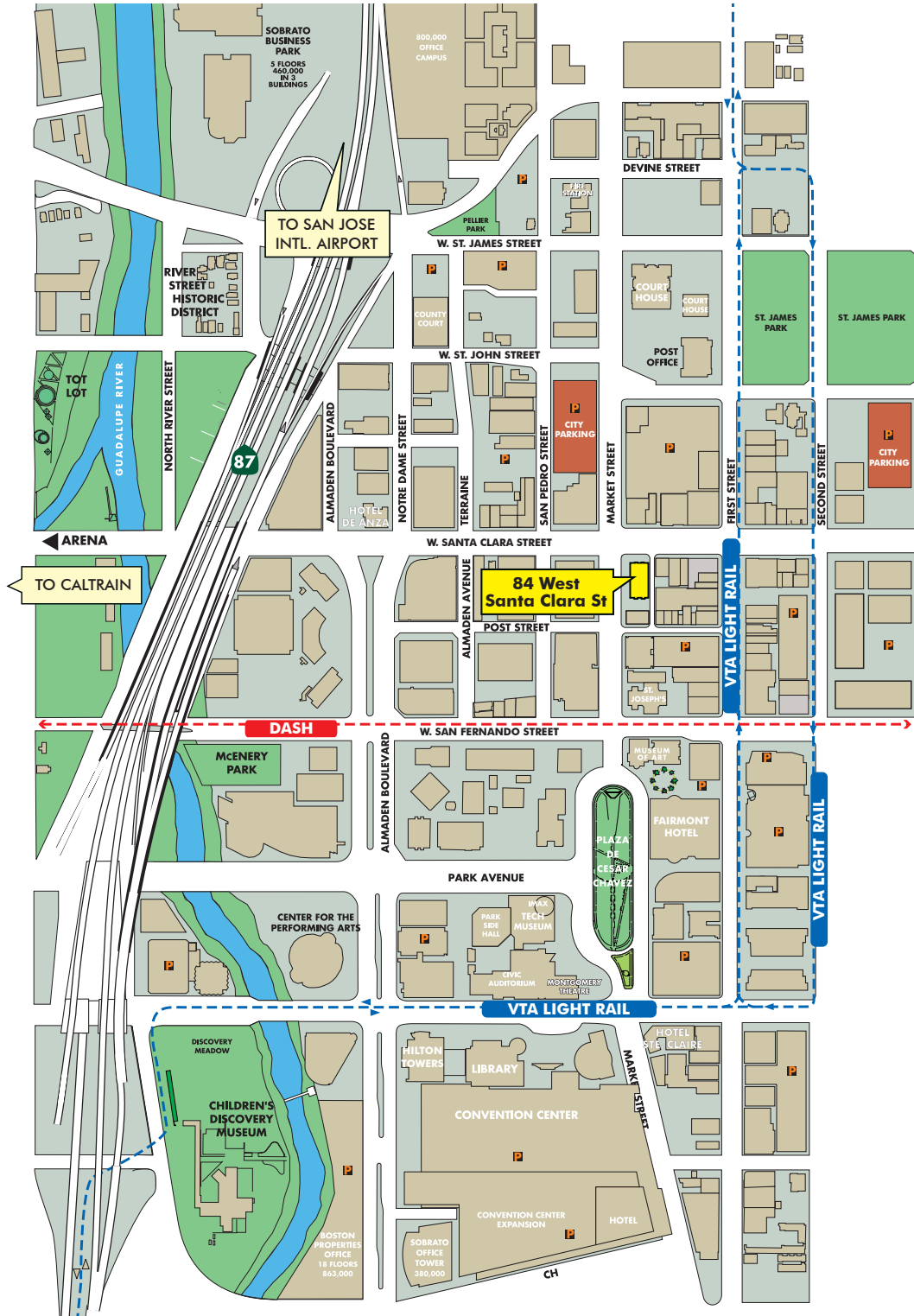
**Tiffany Bird**  
Associate  
Lic. 01936335  
+1 408 453 7450  
tiffany.bird@cbre.com

CBRE, Inc.  
225 W. Santa Clara Street  
12th Floor, San Jose, CA 95113  
www.cbre.us/siliconvalley

# 84 WEST SANTA CLARA

## 84 West Santa Clara Street, Downtown San Jose

### AMENITIES MAP



PLEASE CONTACT  
ONE OF THESE  
EXCLUSIVE AGENTS:

**Vince Machado**  
Senior Vice President  
Lic. 01317553  
+1 408 453 7411  
vince.machado@cbre.com

**Matthew Taylor**  
Senior Vice President  
Lic. 01897355  
+1 408 453 7469

**Tiffany Bird**  
Associate  
Lic. 01936335  
+1 408 453 7450

CBRE, Inc.  
225 W. Santa Clara Street  
12th Floor, San Jose, CA 95113  
www.cbre.us/siliconvalley

© 2018 CBRE, Inc. This information has been obtained from sources believed reliable. We have not verified it and make no guarantee, warranty or representation about it. Any projections, opinions, assumptions or estimates used are for example only and do not represent the current or future performance of the property. You and your advisors should conduct a careful, independent investigation of the property to determine to your satisfaction the suitability of the property for your needs. Photos herein are the property of their respective owners and use of these images without the express written consent of the owner is prohibited. CBRE and the CBRE logo are service marks of CBRE, Inc. and/or its affiliated or related companies in the United States and other countries. All other marks displayed on this document are the property of their respective owners.

