

FOR SUBLEASE

4600 BOHANNON DRIVE

SUITE 100

MENLO PARK, CALIFORNIA



PROPERTY HIGHLIGHTS

- + 10,985 Rentable Square Feet
- + Ground Floor Location
- + LED: April 30, 2020
- + Quality Sublessor
- + Asking Rate: Negotiable
- + Amenity-Rich Business Park
 - Shuttle to Caltrain
 - Abundant Common Areas
 - On site Deli
 - Fitness Facility



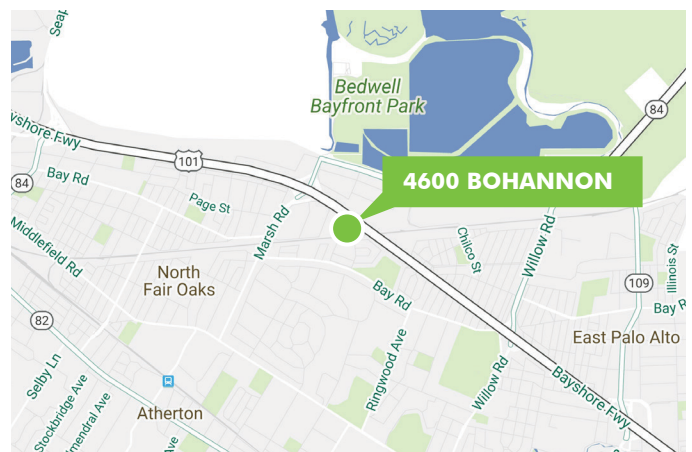
CONTACT US

MILES DELONG

Sales Associate
+1 650 494 5145
miles.delong@cbre.com
Lic. 02049035

GREGORY S. DELONG

Senior Vice President
+1 650 494 5117
greg.delong@cbre.com
Lic. 00791698



www.cbre.com

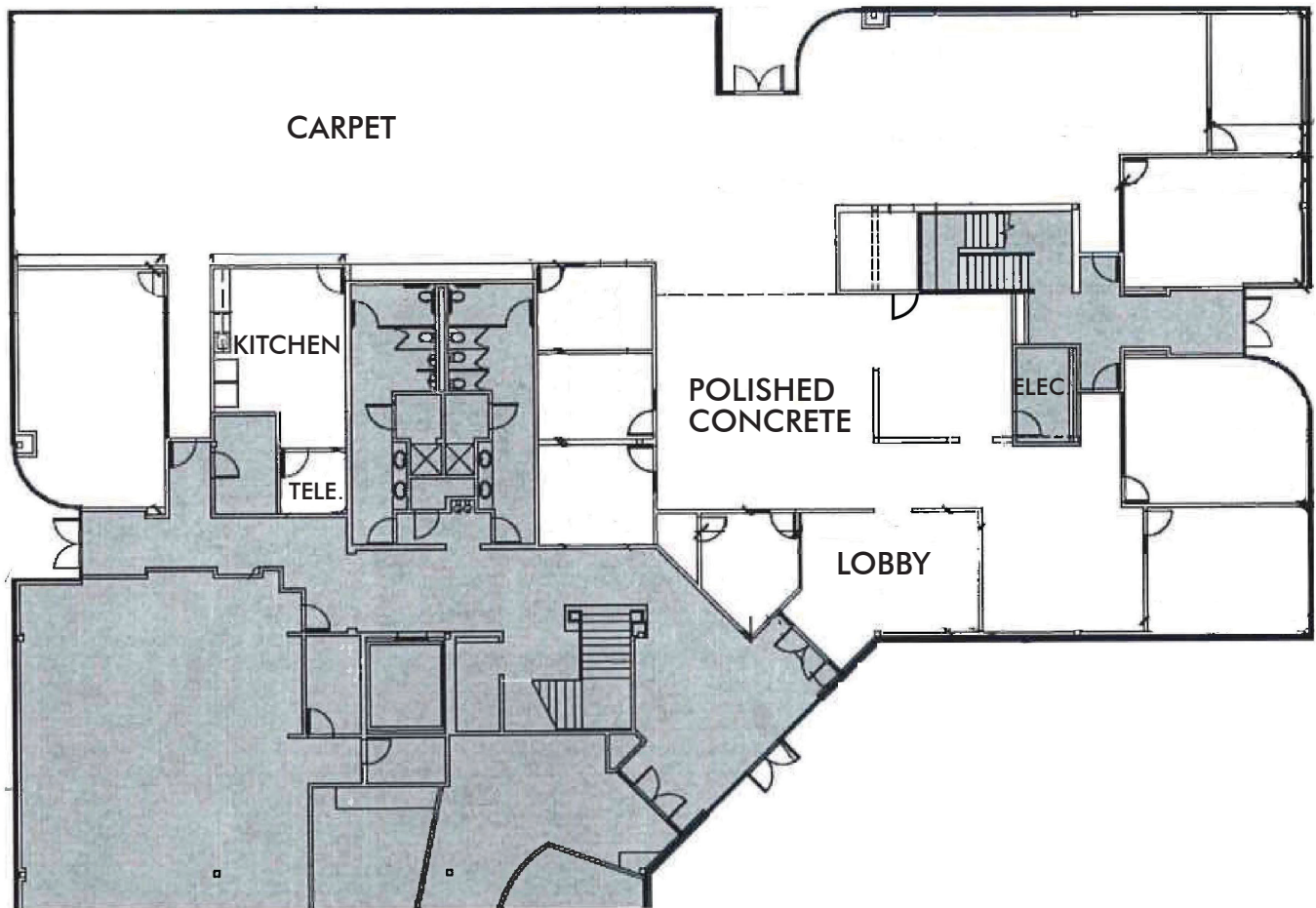
CBRE

FOR SUBLEASE
4600 BOHANNON DRIVE

SUITE 100
MENLO PARK, CA



FLOOR PLAN



© 2018 CBRE, Inc. This information has been obtained from sources believed reliable. We have not verified it and make no guarantee, warranty or representation about it. Any projections, opinions, assumptions or estimates used are for example only and do not represent the current or future performance of the property. You and your advisors should conduct a careful, independent investigation of the property to determine to your satisfaction the suitability of the property for your needs. Photos herein are the property of their respective owners and use of these images without the express written consent of the owner is prohibited. CBRE and the CBRE logo are service marks of CBRE, Inc. and/or its affiliated or related companies in the United States and other countries. All other marks displayed on this document are the property of their respective owners.