

423 W55TH

OFFICE SPACES
AVAILABLE IN MIDTOWN WEST
NEWMARK



PRIVATE LOBBY & ENTRY

SPACE DETAILS

AVAILABILITIES - 89,593 RSF Block
*Possibility of additional floors

Entire 5th Floor
25,000 RSF

Entire 4th Floor
25,000 RSF

Entire 3rd Floor
25,000 RSF

Partial Ground
14,593 RSF

POSSESSION
Immediate

TERM
Negotiable

COMMENTS

- Building-within-a-building or can be leased as individual floors - flexible configurations
- Private entrance for large tenant

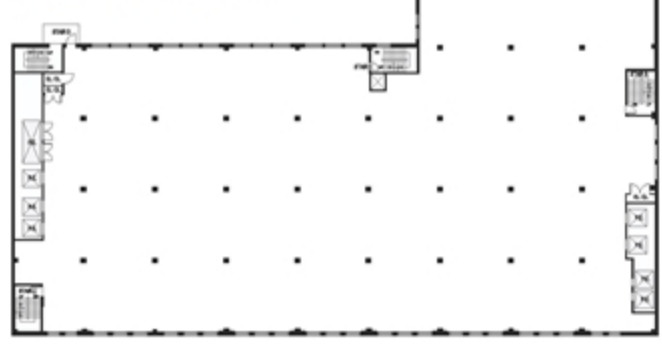


FLOOR PLANS

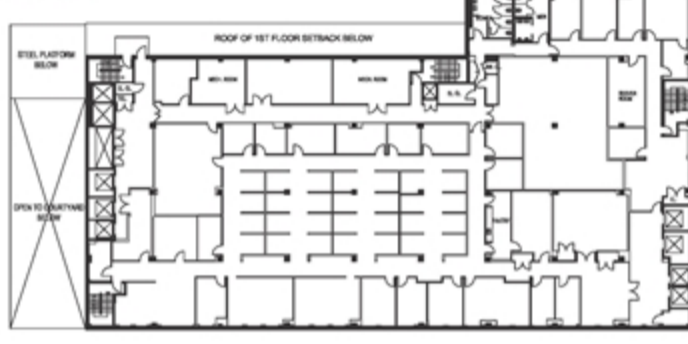
5TH FLOOR CORE AND SHELL



4TH FLOOR CORE AND SHELL



3RD FLOOR AS BUILT



GROUND FLOORPLAN



MIDTOWN WEST



- 22K RESIDENTS within a 10 minute walk
- 65K EMPLOYEES within a 10 minute walk
- 7 MINUTE WALK TO the Time Warner Center at Columbus Circle
- 10 MINUTE WALK TO Lincoln Center
- 15 MINUTE WALK TO Times Square
- 16M ANNUAL VISITORS TO the Time Warner Center
- 6.5M ANNUAL VISITORS TO Lincoln Center



423 W55TH

OFFICE

HOWARD KESSELER
212-372-2110
howard.kessler@nrmk.com

ROB SILVER
212-372-2005
robert.silver@nrmk.com

ANTHONY SCIACCA
212-372-2086
anthony.sciacca@nrmk.com

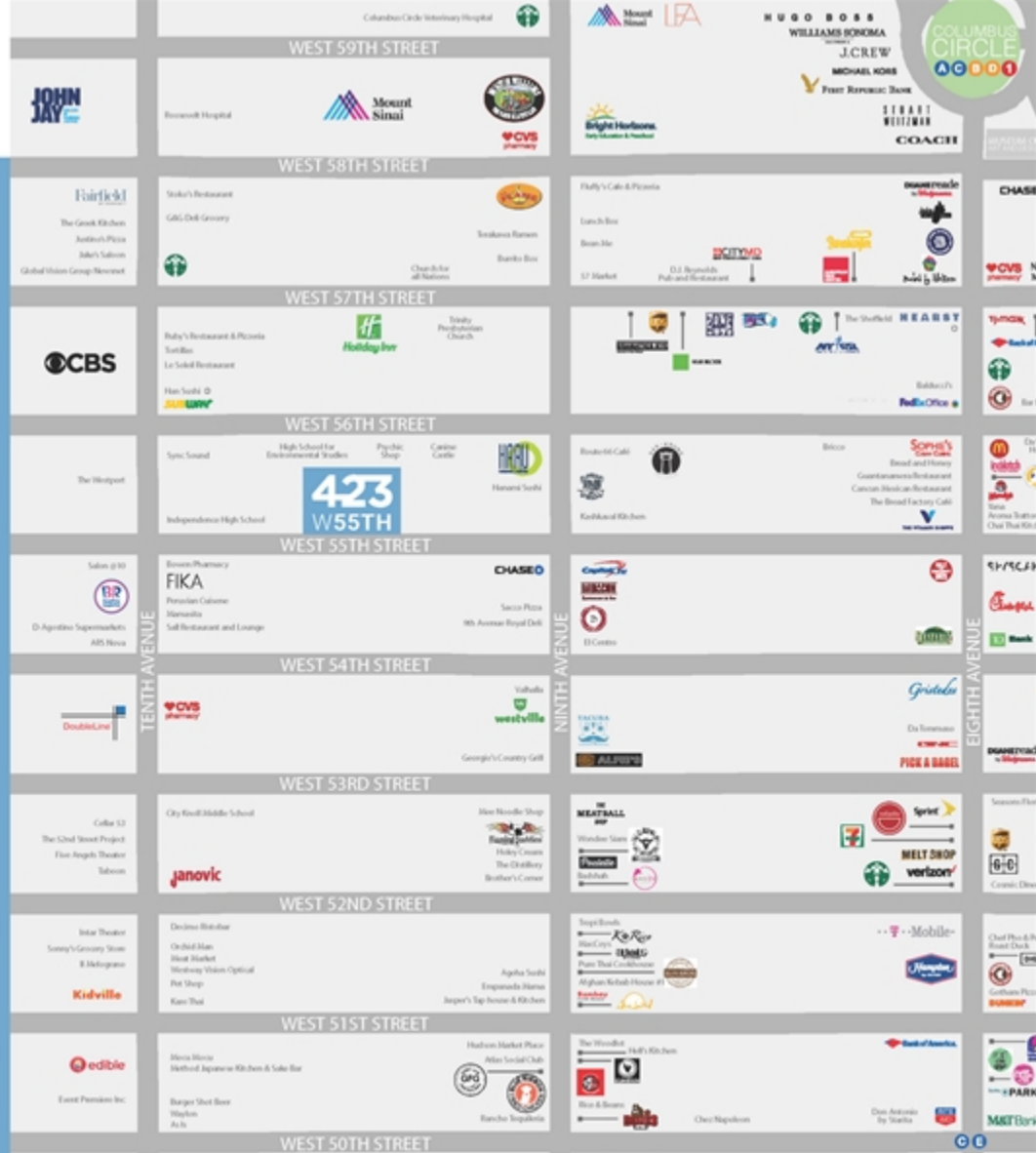
BRITTANY SILVER
212-372-2219
brittany.silver@nrmk.com

JAMIE JACOBS
212-372-2487
jamie.jacobs@nrmk.com

NEWMARK

NMRK.COM

© 2021 NEWMARK. The information contained herein has been obtained from sources deemed reliable but has not been verified and no guarantee, warranty or representation, either express or implied, is made with respect to such information. Terms of sale or lease and availability are subject to change or withdrawal without notice.



DOWNLOAD BROCHURE

125 Park Avenue, New York, NY 10017 t 212-372-2086

The information contained herein has been obtained from sources deemed reliable but has not been verified and no guarantee, warranty or representation, either express or implied, is made with respect to such information. Terms of sale or lease and availability are subject to change or withdrawal without notice.

©2022 Newmark. All Rights Reserved.