

CLASS A MEDICAL OFFICE SPACE FOR LEASE

LEAGUE LINE MEDICAL OFFICE BUILDING

4015 INTERSTATE 45 NORTH | CONROE, TEXAS 77304



THE
RMR
GROUP

 TRANSWESTERN

CLASS A MEDICAL OFFICE SPACE FOR LEASE

LEAGUE LINE MEDICAL OFFICE BUILDING

4015 INTERSTATE 45 NORTH | CONROE, TEXAS 77304

CONTACT
SARAH CARTER | VP

713.231.1629

sarah.carter@transwestern.com

BUILDING SPECS

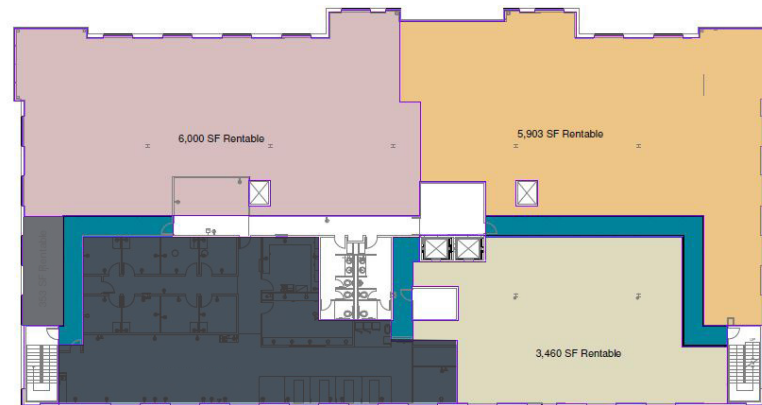
- 3-Story Class A Medical Office Building
- 59,222 Rentable Square Feet
- Surface Parking - Ratio of 5:1,000
- Free Parking
- Generous Tenant Improvements

AVAILABILITIES

- Third Floor (Suite 300: 3,400 - 15,447 SF)
- Lease Term: Minimum 60 Months
- Rate - 1st year: \$17.50/RSF, NNN
- Estimated OpEx: \$12.17/RSF

FEATURES

- NW Corner of Interstate 45 at League Line Road, approximately 11 miles North of The Woodlands
- Class A Finishes Throughout
- Covered Patient Drop off Area
- Office or Medical Use
- Approximately 200,000+ CPD Traffic Counts on Interstate 45



THRIVE IN CONROE

NEARBY HOSPITALS



Conroe Regional Medical Center

6
Miles from League Line

342
Bed Count



Houston Methodist The Woodlands Hospital

12
Miles from League Line

246
Bed Count

HEALTHCARE SPENDING

\$11,131,097

Aggregate Annual Healthcare Spending by Conroe residents

HIGH TRAFFIC COUNT

200,000+
Cars per day



POPULATION GROWTH

"Named fastest-growing city in the U.S., spiking 7.8% growth in one year."

"Conroe booming as America's fastest growing city"

Houston Chronicle, May 2017

RESIDENTIAL DEVELOPMENTS

1 **The Woodlands Hills**
2,000 Acre Community | **4,500** Future Homes

Coming Spring 2018
Developed by Howard Hughes Corp.

2 **Grand Central Park**
2,046 Acre Community | **2,500+** Future Homes

118 Homes Constructed to Date
Developed by Johnson Development Corp.



The information provided herein was obtained from sources believed reliable; however, Transwestern makes no guarantees, warranties or representations as to the completeness or accuracy thereof. The presentation of this property is submitted subject to errors, omissions, change of price or conditions, prior sale or lease, or withdrawal without notice. Copyright © 2019 Transwestern.

SARAH CARTER | VP
713.231.1629
sarah.carter@transwestern.com