

# MIDTOWN BUSINESS CENTER

21110-21166 GREENFIELD ROAD  
OAK PARK, MICHIGAN

INDUSTRIAL FOR SALE OR LEASE  
60,641-91,006 Square Feet Available

OWNED BY:



**SIGNATURE ASSOCIATES**  
KNOW SIGNATURE | KNOW RESULTS

LOCATED IN FEDERALLY APPROVED OPPORTUNITY ZONE

## PROPERTY FEATURES

- 60,641 square feet available for lease
- Entire 91,006 square foot building for sale
- Office square footage to-suit
- 17'6" clear height
- (2) truckwells
- Zoned B-2 general business
- 400 amps, 240 volts – needs refurbishment
- New road with a new traffic light at Greenfield providing great access
- Lease Rate: Negotiable
- Sale Price: Negotiable



For more information, please contact:

**PAUL HOGE**  
(248) 948 0103  
paulhoge@signatureassociates.com

**GARY STEPHENS**  
(248) 948 0104  
gstephens@signatureassociates.com

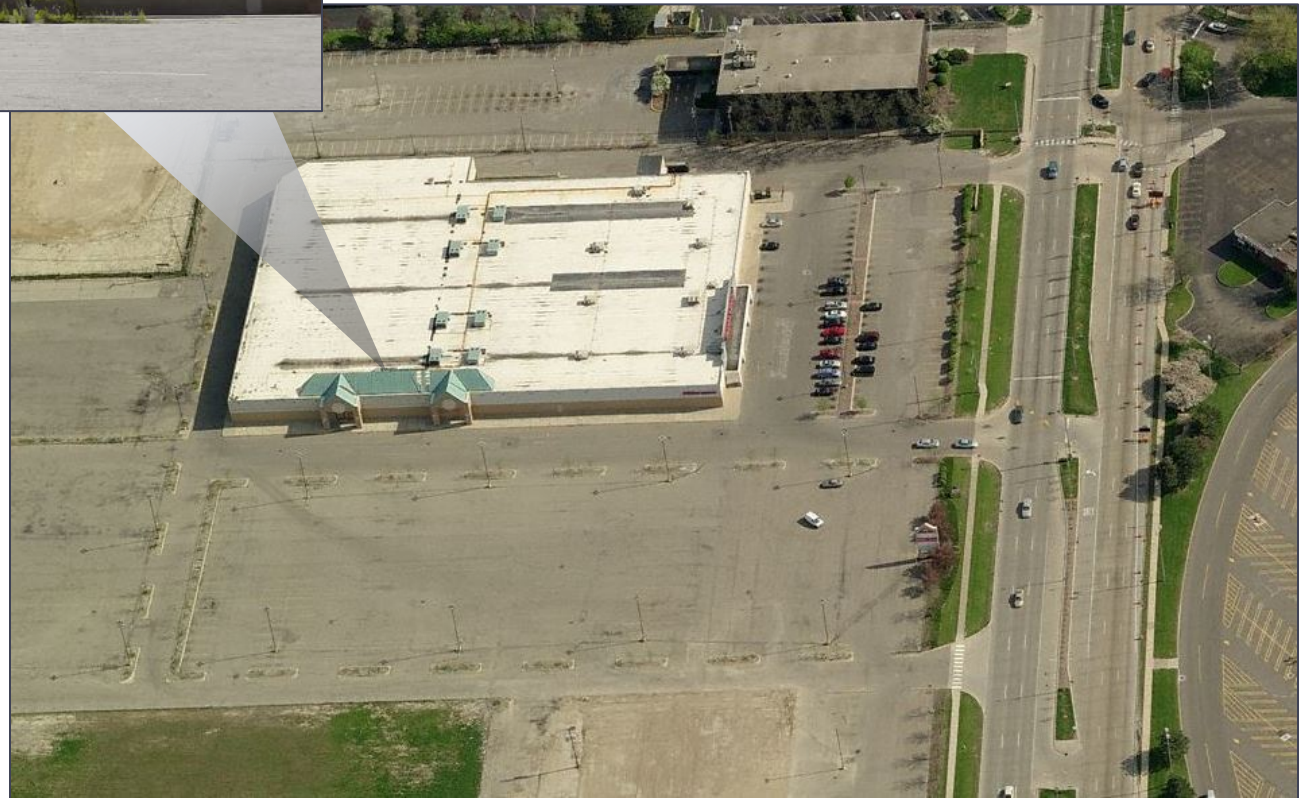
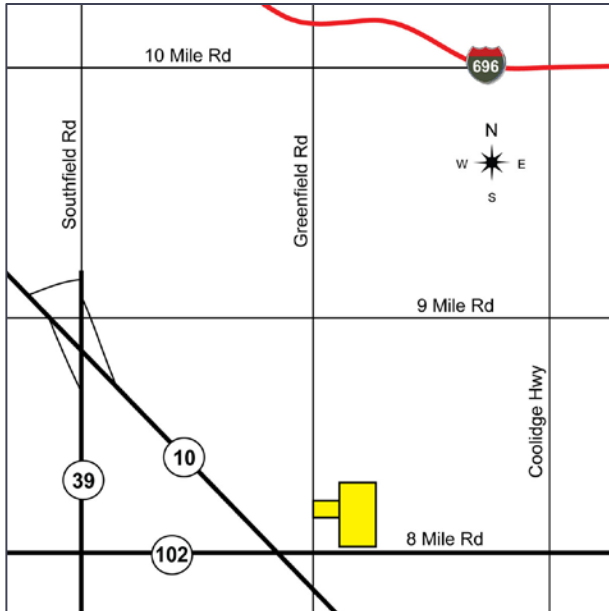
**SIGNATURE ASSOCIATES**  
One Towne Square, Suite 1200  
Southfield, MI 48076  
www.signatureassociates.com

# MIDTOWN BUSINESS CENTER

21110-21166 GREENFIELD - OAK PARK, MICHIGAN

60,641-91,006  
Square Feet  
AVAILABLE

## Exterior Views



For more information, please contact:

**PAUL HOGE**  
(248) 948 0103  
paulhoge@signatureassociates.com

**GARY STEPHENS**  
(248) 948 0104  
gstephens@signatureassociates.com

**SIGNATURE ASSOCIATES**  
One Towne Square, Suite 1200  
Southfield, MI 48076  
www.signatureassociates.com



# MIDTOWN BUSINESS CENTER

21110-21166 GREENFIELD - OAK PARK, MICHIGAN

60,641-91,006  
Square Feet  
AVAILABLE

## Floor Plan

Reflects space available for lease



For more information, please contact:

**PAUL HOGE**  
(248) 948 0103  
paulhoge@signatureassociates.com

**GARY STEPHENS**  
(248) 948 0104  
gstephens@signatureassociates.com

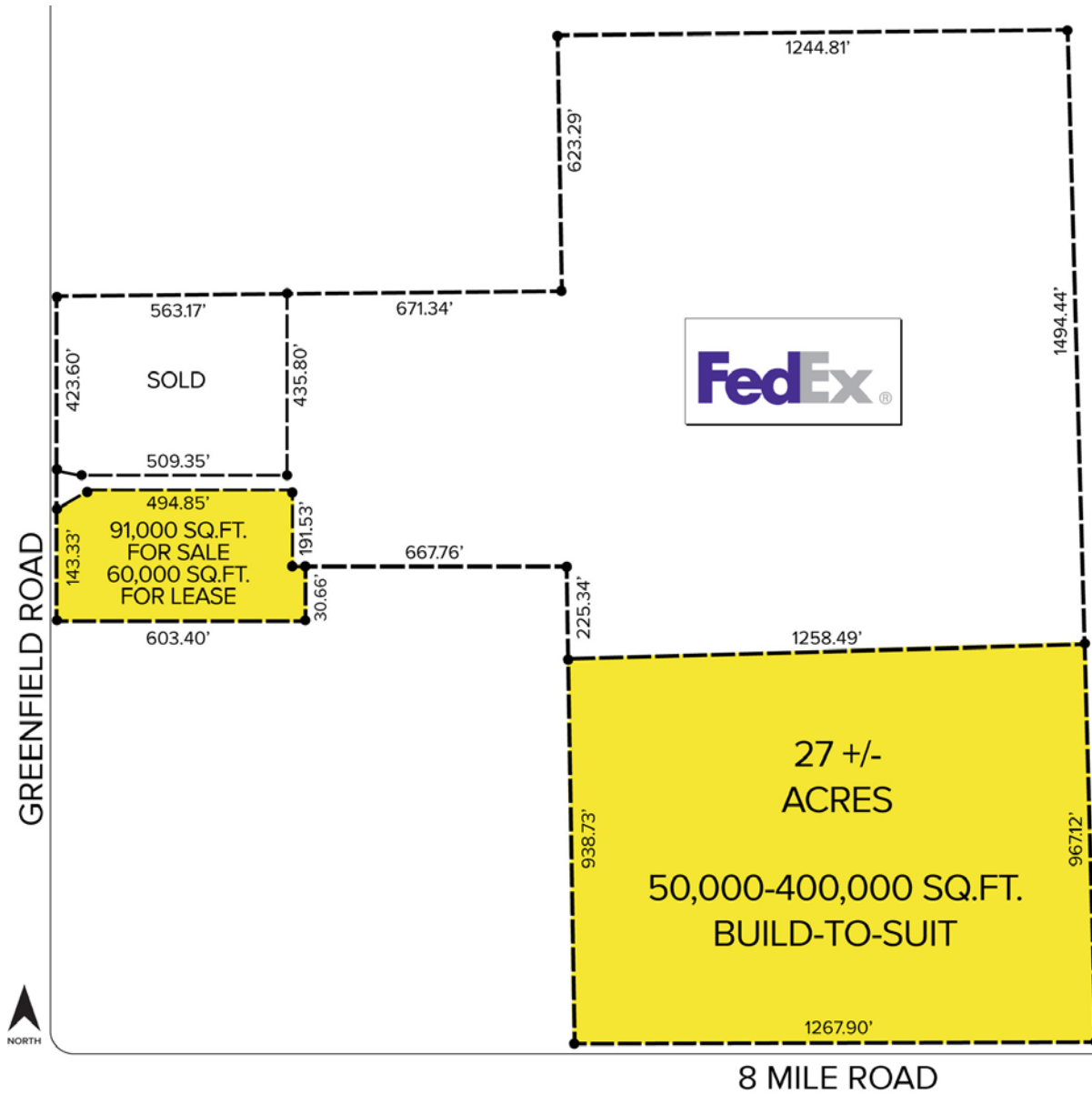
**SIGNATURE ASSOCIATES**  
One Towne Square, Suite 1200  
Southfield, MI 48076  
www.signatureassociates.com

# MIDTOWN BUSINESS CENTER

21110-21166 GREENFIELD - OAK PARK, MICHIGAN

60,641-91,006  
Square Feet  
AVAILABLE

## Site Plan



For more information, please contact:

**PAUL HOGE**  
(248) 948 0103  
paulhoge@signatureassociates.com

**GARY STEPHENS**  
(248) 948 0104  
gstephens@signatureassociates.com

**SIGNATURE ASSOCIATES**  
One Towne Square, Suite 1200  
Southfield, MI 48076  
www.signatureassociates.com