

OFFICE FOR LEASE

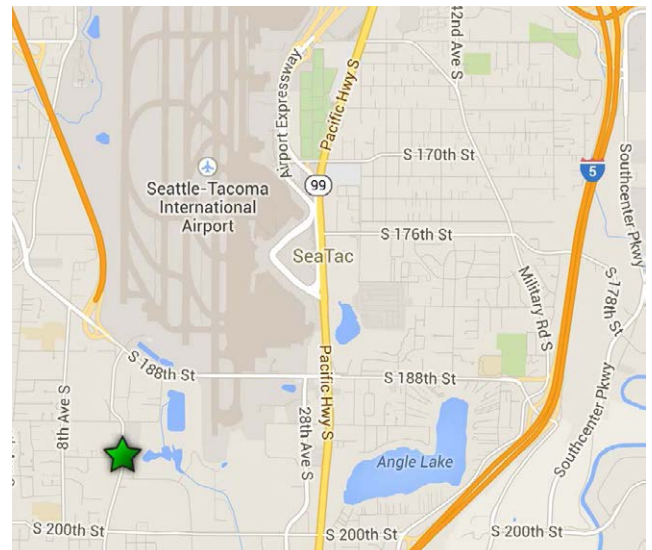
DES MOINES LOGISTICS CENTER

19216 - 19320
DES MOINES MEMORIAL DRIVE
Seatac, Washington



FEATURES

- + Economical office option
- + Flexible sizes and configurations
- + Turn-key and shell spaces
- + Ample natural light
- + High visibility
- + Convenient freeway access
- + Call for rates



CONTACT US

ANDREW STARK

First Vice President
+1 206 442 2746
andrew.stark@cbre.com

ANDREW HITCHCOCK

Senior Vice President
+1 206 442 2719
andrew.hitchcock@cbre.com

ZAC SNEDEKER

Associate
+1 206 442 2709
zac.snedeker@cbre.com

CBRE, INC.

1420 5th Ave.
Suite 1700
Seattle, WA 98101

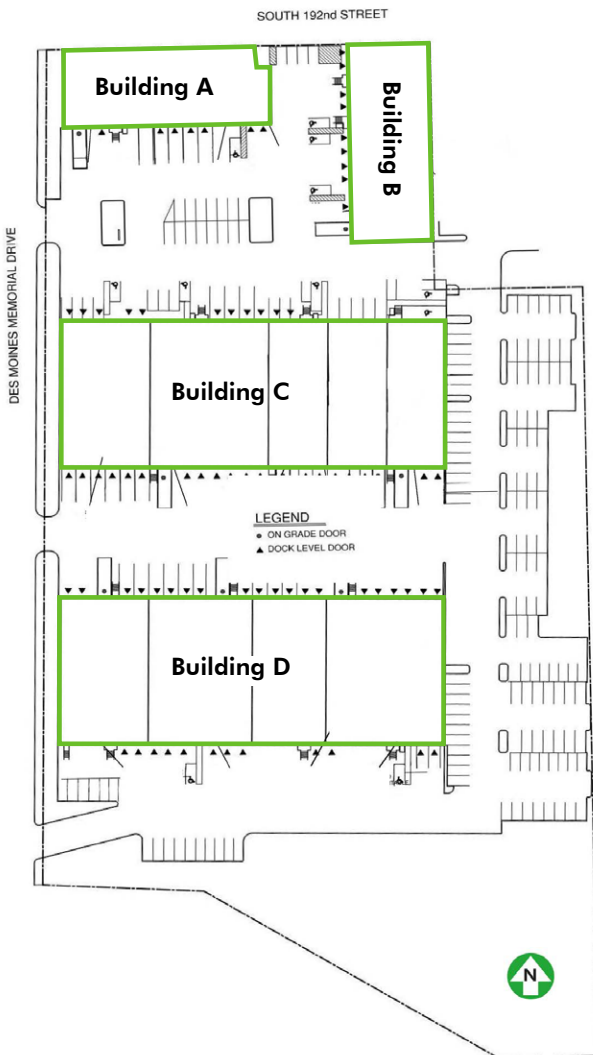
www.cbre.com/seattle

CBRE

OFFICE FOR LEASE DES MOINES LOGISTICS CENTER

19216-19320
DES MOINES MEMORIAL DR.
Seatac, Washington

SITE PLAN

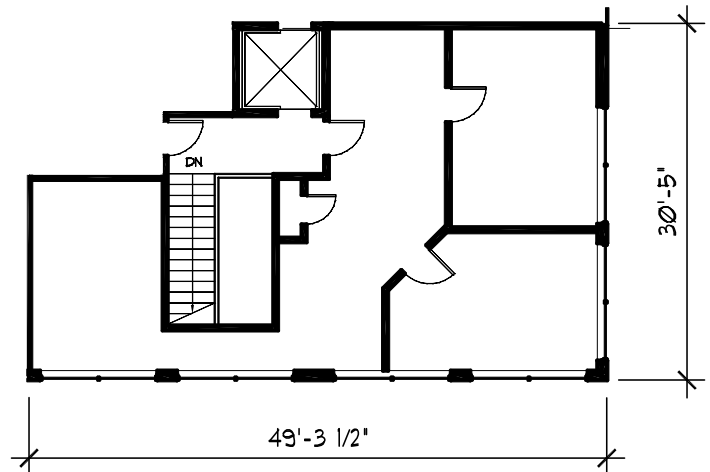


AVAILABLE OFFICE SPACES

BUILDING/SUITE	OFFICE SQUARE FEET
A520	± 1,560 SF
C420	± 1,374 SF
C520	± 1,277 SF
D120	± 1,714 SF
D220	± 1,931 SF
D420	± 4,531 SF
D520	± 1,718 SF

EXAMPLE FLOOR PLAN

Building A, Suite 520, ± 1,560 SF



© 2020 CBRE, Inc. All rights reserved. This information has been obtained from sources believed reliable, but has not been verified for accuracy or completeness. Any projections, opinions, or estimates are subject to uncertainty. The information may not represent the current or future performance of the property. You and your advisors should conduct a careful, independent investigation of the property and verify all information. Any reliance on this information is solely at your own risk. CBRE and the CBRE logo are service marks of CBRE, Inc. and/or its affiliated or related companies in the United States and other countries. All other marks displayed on this document are the property of their respective owners. Photos herein are the property of their respective owners and use of these images without the express written consent of the owner is prohibited. 071620 amf