

# For Sale

## \$545,000.00



Devils Lake, ND  
1315 HWY 2 E.

## Property Information

**PIN:** 39-0505-00001-001

**Site Size:** +/- 2.75 Acres

**Building Size:** Building A: +/- 12,500 square feet

Building B: +/- 9,600 square feet

Building C: +/- 5,300 square feet

**Description:** This former lumberyard consists of 3 buildings totalling approximately 27,400 square feet on 2.75 Acres with great Highway 2 frontage. The buildings are mostly cold storage with an office and showroom in the front of building A.



**Sale Price:** \$545,000.00

**Ben Saucke**  
701.478.5206  
CREFargo@gmail.com

[WWW.CBCELEMENT.COM](http://WWW.CBCELEMENT.COM)

©2017 Coldwell Banker Real Estate LLC, dba Coldwell Banker Commercial Affiliates. All Rights Reserved. Coldwell Banker Real Estate LLC, dba Coldwell Banker Commercial Affiliates fully supports the principles of the Equal Opportunity Act. Each Office is Independently Owned and Operated. Coldwell Banker Commercial and the Coldwell Banker Commercial Logo are registered service marks owned by Coldwell Banker Real Estate LLC, dba Coldwell Banker Commercial Affiliates.

COLDWELL BANKER COMMERCIAL  
ELEMENT REALTY  
4610 Amber Valley Pkwy, Suite E  
Fargo, ND 58104

**FOR SALE**  
**\$545,000.00**



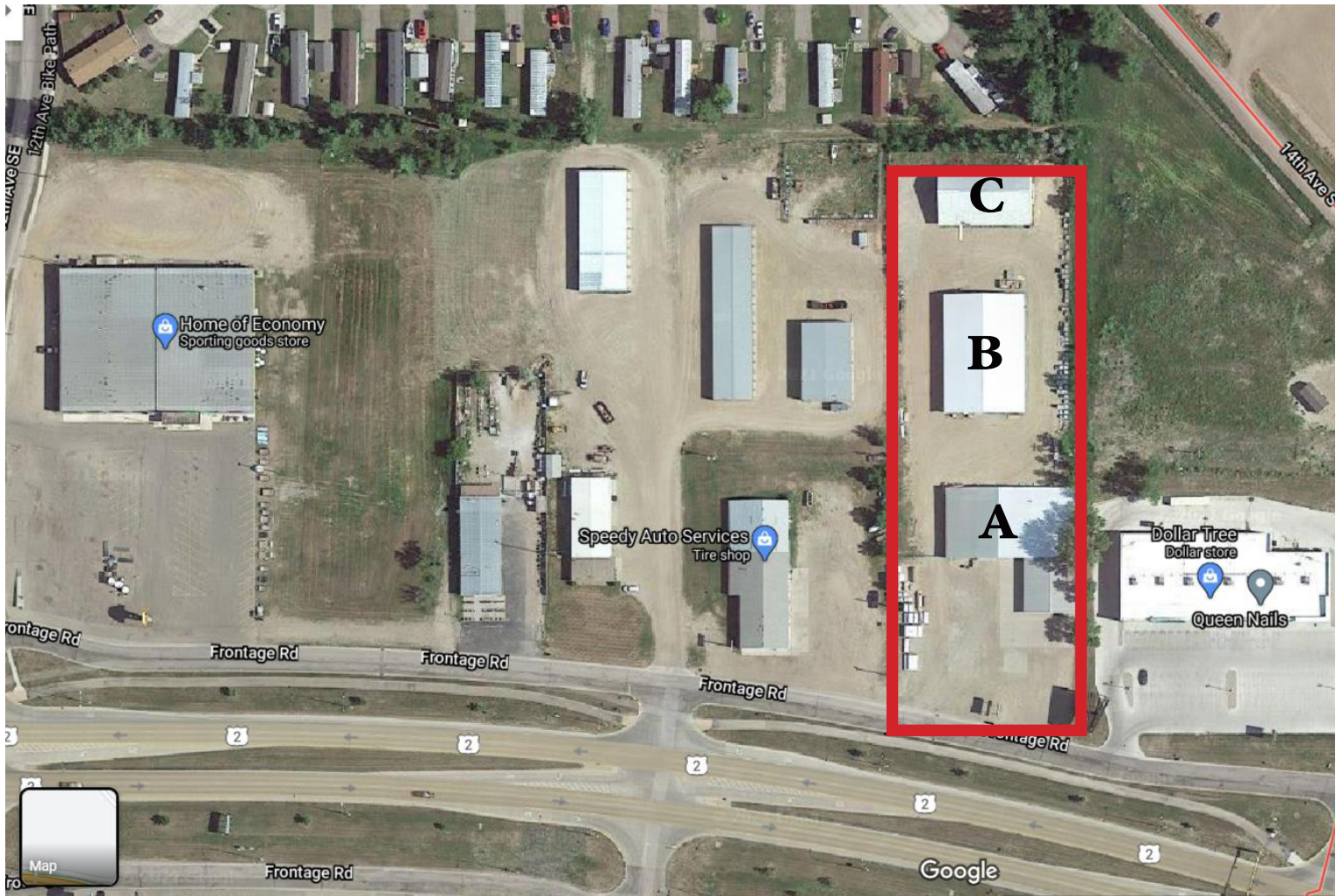
# FOR Sale

\$545,000.00



# FOR Sale

\$545,000.00



\* LOT LINES ARE APPROXIMATE