



SALE PRICE: \$8.00 / SF | 3.34 ACRES

DEMOGRAPHICS

	1 mile	3 miles	5 miles
Estimated Population	6,726	56,782	80,814
Avg. Household Income	\$57,837	\$59,791	\$63,226

- Excellent redevelopment opportunity
- Great Belt Highway exposure
- Full access from Belt Highway and S. 36th Street

 [CLICK HERE TO VIEW MORE LISTING INFORMATION](#)

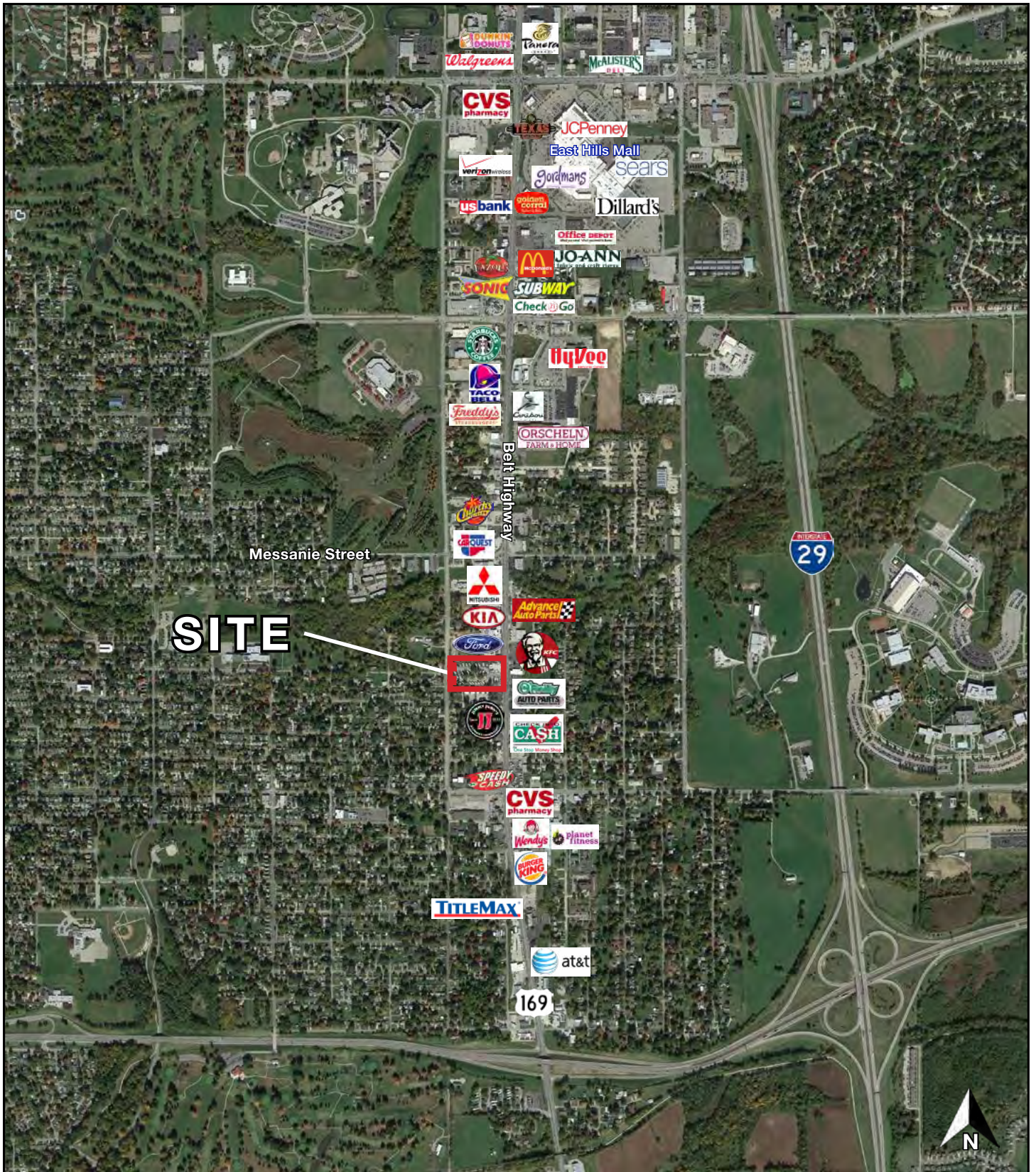
For More Information Contact:

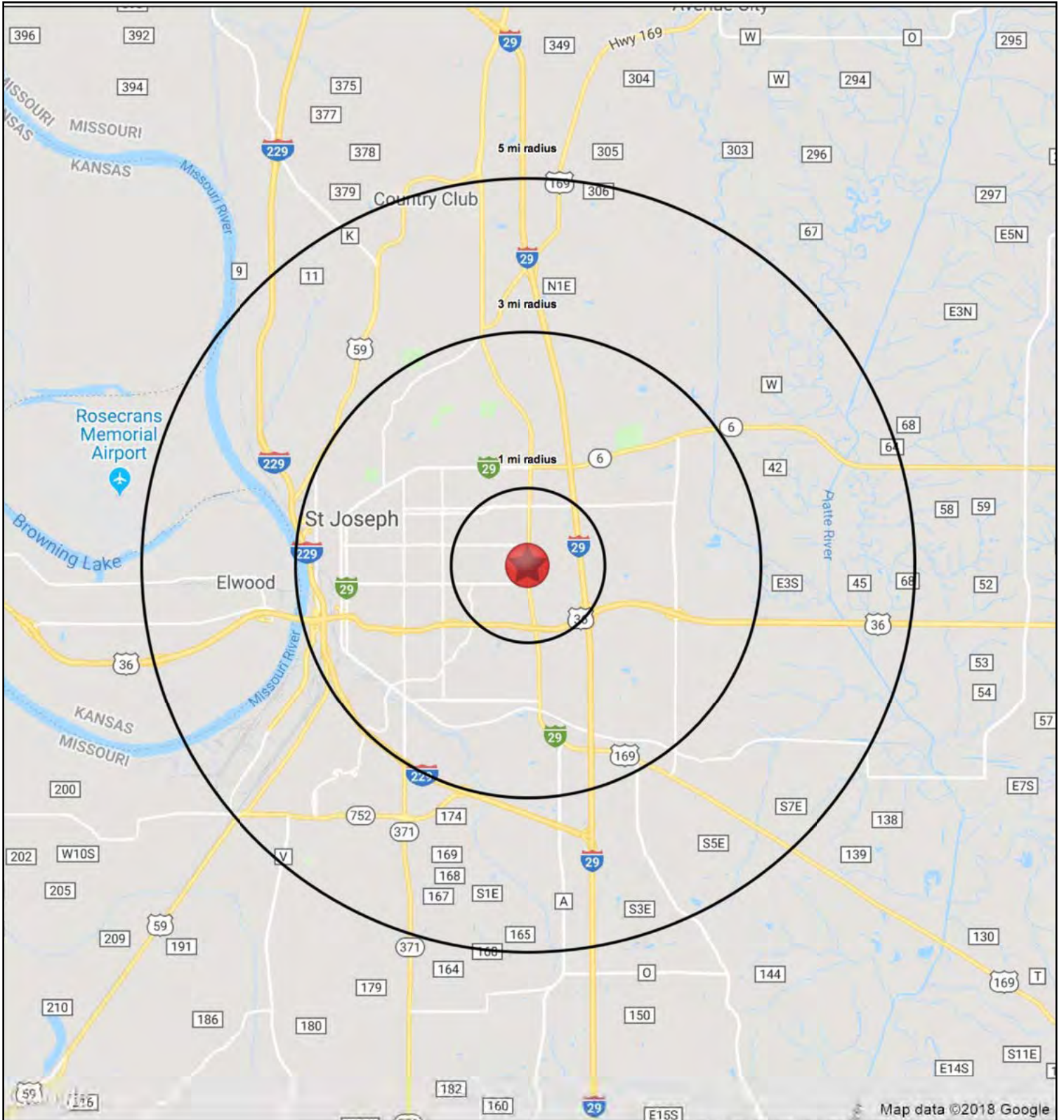
MARK MCCONAHAY | 816.412.7386 | mmconahay@blockandco.com

TONY DETOMMASO | 816.412.7308 | tdetommaso@blockandco.com

Exclusive Agents

AERIAL







REDEVELOPMENT LAND

822 S. Belt Highway, Saint Joseph, MO

**FOR
SALE**

822 S. Belt Highway		1 mi radius	3 mi radius	5 mi radius
St Joseph, MO 64507				
POPULATION	2018 Estimated Population	6,726	56,782	80,814
	2023 Projected Population	6,589	57,127	80,937
	2010 Census Population	6,823	56,711	80,952
	2000 Census Population	6,871	54,536	78,061
	Projected Annual Growth 2018 to 2023	-0.4%	0.1%	-
	Historical Annual Growth 2000 to 2018	-0.1%	0.2%	0.2%
	2018 Median Age	33.3	36	36.6
HOUSEHOLDS	2018 Estimated Households	2,777	22,786	32,380
	2023 Projected Households	2,776	23,410	33,143
	2010 Census Households	2,721	21,982	31,352
	2000 Census Households	2,788	21,433	30,528
	Projected Annual Growth 2018 to 2023	-	0.5%	0.5%
	Historical Annual Growth 2000 to 2018	-	0.4%	0.3%
RACE AND ETHNICITY	2018 Estimated White	86.8%	83.6%	85.5%
	2018 Estimated Black or African American	6.2%	7.9%	6.6%
	2018 Estimated Asian or Pacific Islander	1.3%	2.1%	1.9%
	2018 Estimated American Indian or Native Alaskan	0.5%	0.5%	0.5%
	2018 Estimated Other Races	5.2%	6.0%	5.6%
	2018 Estimated Hispanic	5.9%	7.2%	6.9%
INCOME	2018 Estimated Average Household Income	\$57,837	\$59,791	\$63,226
	2018 Estimated Median Household Income	\$47,396	\$49,327	\$51,530
	2018 Estimated Per Capita Income	\$24,281	\$24,754	\$25,880
EDUCATION (AGE 25+)	2018 Estimated Elementary (Grade Level 0 to 8)	4.3%	4.3%	4.2%
	2018 Estimated Some High School (Grade Level 9 to 11)	5.5%	8.7%	8.1%
	2018 Estimated High School Graduate	37.7%	34.7%	35.7%
	2018 Estimated Some College	28.1%	25.0%	24.8%
	2018 Estimated Associates Degree Only	4.7%	5.6%	5.9%
	2018 Estimated Bachelors Degree Only	15.4%	14.6%	14.2%
	2018 Estimated Graduate Degree	4.4%	7.0%	7.1%
BUSINESS	2018 Estimated Total Businesses	228	2,814	3,444
	2018 Estimated Total Employees	4,867	45,712	55,069
	2018 Estimated Employee Population per Business	21.4	16.2	16.0
	2018 Estimated Residential Population per Business	29.6	20.2	23.5

