



# 320 NORTH CLARK

WEST BLOCK OF CLARK BETWEEN KINZIE & THE CHICAGO RIVER

RIVER NORTH | CHICAGO

RETAIL SPACE  
AVAILABLE

# RETAIL SPACE AVAILABLE

## 320 NORTH CLARK STREET

River North | Chicago



### SPACE AVAILABLE

Ground Level 3,370 SF

### CEILING HEIGHTS

Ground Level 30' -7"

**GROUND LEVEL**  
3,370 SF

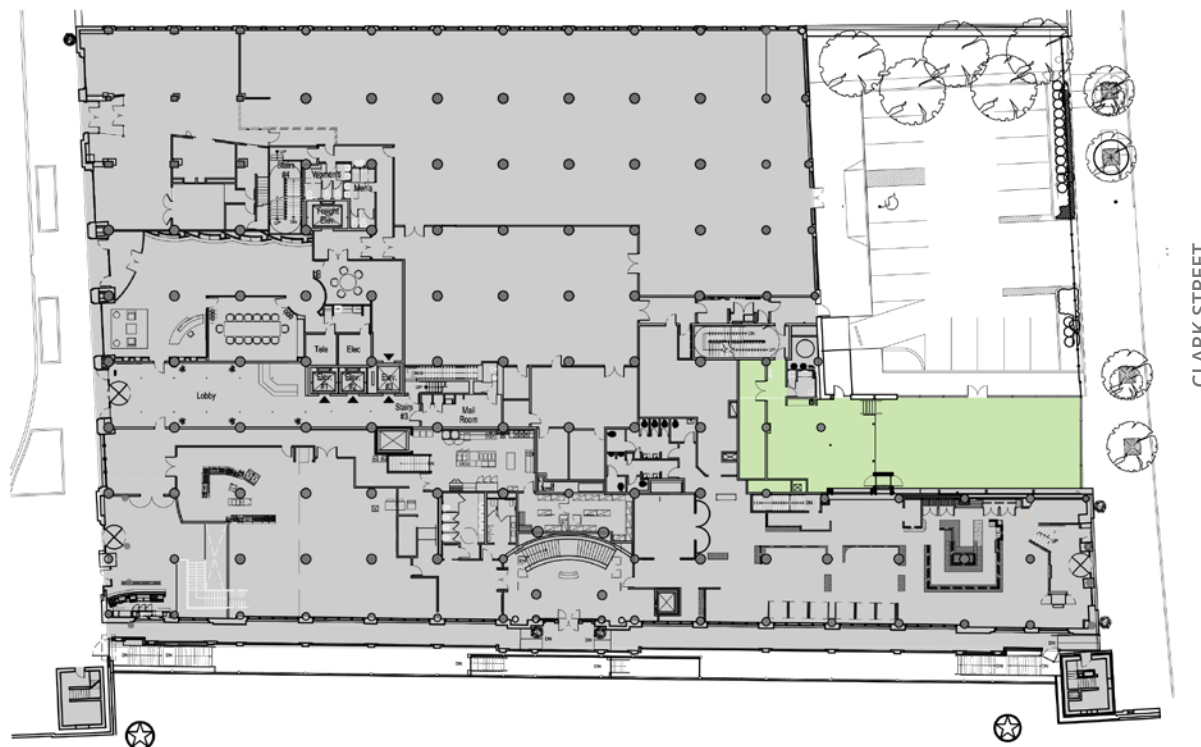


### INTRODUCTION

- Located just north of Chicago's activated Riverwalk and directly across from the widely popular Pizzeria Portofino and RPM Seafood.
- Positioned nearby from Class A Office buildings including 353 N. Clark, 350 N. Clark and 321 N. Clark.
- River North is home to many of the country's top performing restaurants and is located just north of The Chicago River and the Loop - the country's 2nd largest Central Business District.
- The wide-ranging success of the neighborhood's retailers and restaurants is largely to due to the convergence of its many hotels/tourists, affluent residential profile and dense daytime population.

### AREA TENANTS

The Kitchen, Nonnina, Cafe Umbria, Protein Bar, Blue Mercury, Barrio, RPM Steak, The Smith



### DEMOGRAPHICS

	0.25 Mile	0.50 Mile	1 Mile	2 Miles
<b>TOTAL POPULATION</b>	3,244	20,524	91,310	193,966
<b>AVERAGE HH INCOME</b>	\$116,267	\$129,060	\$130,745	\$126,544
<b>DAYTIME POPULATION</b>	34,488	162,987	361,033	428,810

# RETAIL SPACE AVAILABLE

## 320 NORTH CLARK STREET

River North | Chicago



FOR MORE INFORMATION, CONTACT

ANTHONY CAMPAGNI  
 ac@arcgrp.com  
 (630) 908-5695

ELAN RASANSKY  
 elan@arcgrp.com  
 (630) 908-5696

200 S. WACKER DRIVE, SUITE 1325, CHICAGO, IL 60606 | WWW.ARCREGRP.COM

©2020 ARC Real Estate. All information is from sources believed reliable, not independently verified, and thus subject to errors, omissions, and modifications such as price, listing, square footage, rates and commissions. All information, estimates and projections subject to change, market assumptions, unknown facts and conditions, and future potentialities. ARC Real Estate makes no express or implied representations or warranties, as facts and results may vary materially from all information, estimates and projections. All renderings presented are conceptual.

