

Nesbit Ferry Professional Place

9570 Nesbit Ferry Road | Alpharetta, GA 30022



OFFICE FOR LEASE

SPACE AVAILABLE 1,890 SF
Second Floor

LEASE RATE \$19/SF MG

HIGHLIGHTS

- Ideal location for a neighborhood medical practice or professional services firm
- Excellent signage opportunity
- Frontage and high visibility on Nesbit Ferry
- High traffic counts of 21,400 VPD on Nesbit Ferry
- Two-story office building
- 4.5/1,000 SF parking ratio
- Ample drive-up parking
- Negotiable terms



DEL EARLY
770.913.3913
dearly@ackermanco.net

REID MOORE
770.913.3918
rmoore@ackermanco.net

Ackerman & Co.

Nesbit Ferry Professional Place

Office for lease: 1,890 SF

9570 Nesbit Ferry Road
Alpharetta, Georgia 30022

CLOSE-IN AERIAL SHOWING LOCATION INCLUDING NEARBY RETAIL, LANDMARKS AND HIGH-END RESIDENTIAL.



©2019 Ackerman & Co. All rights reserved. While we have no reason to doubt the accuracy of the information provided from sources we deem reliable, we cannot guarantee it and therefore assume no liability for errors, omissions or changes to this content.

DEL EARLY
770.913.3913 | dearly@ackermanco.net

REID MOORE
770.913.3918 | rmoore@ackermanco.net

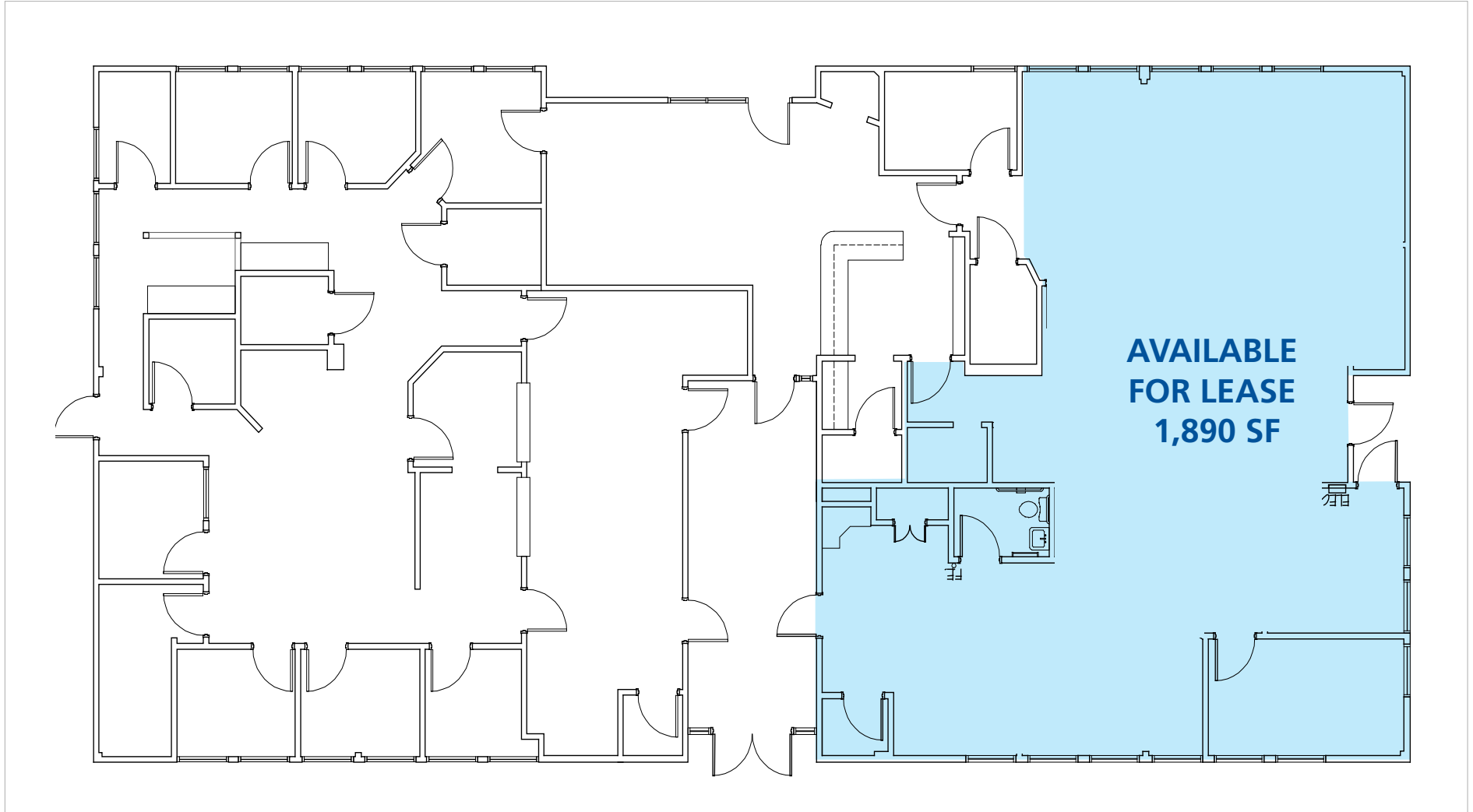
Ackerman & Co.

Nesbit Ferry Professional Place

Office for lease: 1,890 SF

9570 Nesbit Ferry Road
Alpharetta, Georgia 30022

SECOND FLOOR | 1,890 SF



©2019 Ackerman & Co. All rights reserved. While we have no reason to doubt the accuracy of the information provided from sources we deem reliable, we cannot guarantee it and therefore assume no liability for errors, omissions or changes to this content.

DEL EARLY
770.913.3913 | dearly@ackermanco.net

REID MOORE
770.913.3918 | rmoore@ackermanco.net

Ackerman & Co.